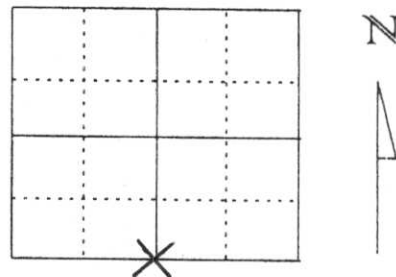


U.S. PUBLIC LAND SURVEY MONUMENT RECORD

Note: This form is intended and designed to fulfill all requirements of Wisconsin Administrative Code, Chapter A-E 5.02, U.S. Public Land Survey Monument Record (3) (a) (b) (c) (d) (e) (f) (g) (h) (l). An additional sheet may be added if necessary to conform with said requirements.

(a) Corner location: Township 32 North
 Range 6 East
 Town/City/Village ROCK FALLS
 County Lincoln



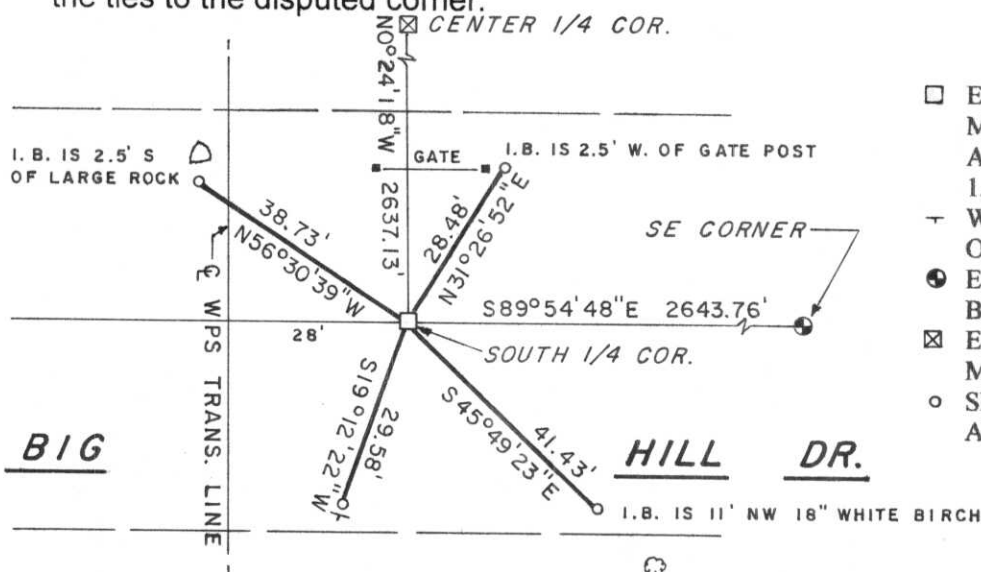
Section 18

(b) (f) (g) (h) Description of monument found at this corner and if it was accepted, state all evidence (material, testimonial, occupational, plats, records, other monuments) used as a basis for accepting. If not accepted or if nothing was found, state evidence used as basis for establishing location. If reestablished through lost corner proportionate methods, indicate all monuments, distances and directions used to establish.

IN APRIL OF 1852 A. G. ELLIS AND F. S. ELLIS SET POST FOR SOUTH 1/4 CORNER WITH THE FOLLOWING TIES: HEMLOCK 14 S44°E 20 LINKS, BASSWOOD 10 N44°W 27 LINKS.
 IN 1943, FRANCIS FOX SET A STONE MONUMENT FOR THE SOUTH 1/4 CORNER. WE DUG BY HAND IN A POSITION BASED ON HIS NOTES AND DISTANCES TO ADJACENT SECTION CORNERS. WE FOUND A 5" X 5" GRAY GRANITE MONUMENT WITH POLISHED TOP. MONUMENT IS 1.5 FEET BELOW ROAD SURFACE AND 2 FEET NORTH OF ROAD CENTERLINE. TOP OF STONE HAS "X" CUT AND ENGRAVED SECTION NUMBERS 18 AND 19. SET 3/4" X 24" RE-BAR ON NORTH SIDE OF STONE AND TIED OUT AS SHOWN BELOW.

RECEIVED BY LINCOLN COUNTY
 SURVEYOR THIS 15TH DAY
 OF February 20 06
Tony Walker
 COUNTY SURVEYOR

(c) (d) (e) Plan view of corner with ties to at least 4 witness monuments. If in disagreement with previously established corner, show the distances between the two corners and also indicate the ties to the disputed corner.



- LEGEND**
- EXISTING 5" X 5" GRAY GRANITE MONUMENT WITH POLISHED TOP AND ENGRAVED NUMBERS DOWN 1.5' BELOW ROAD SURFACE
 - WHITE WITNESS POST SET 0.3' SW OF SET 7/8" RE-BAR
 - EXISTING LINCOLN COUNTY BERNTSEN MONUMENT
 - EXISTING 8" X 8" RED GRANITE MONUMENT WITH POLISHED TOP
 - SET 7/8" X 30" RE-BAR WITH ALUMINUM WITNESS CAP

(l) I, DAVID J. GOSLIN
 (type or print name) certify that the corner location on this record was determined by me or under my direction and control and that this U.S. Public Land Survey Monument Record is correct and complete to the best of my knowledge and belief.

David J. Goslin
 Signature



1-10-06
 Date

Index No. 19-3

18
19



WATKINS
NO STOPPING





