

# U.S. PUBLIC LAND SURVEY MONUMENT RECORD

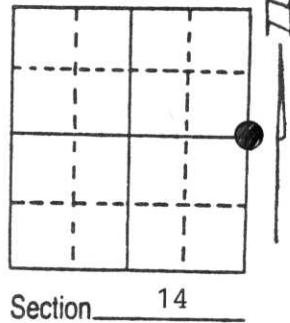
Note: This form is intended and designed to fulfill all requirements of Wisconsin Administrative Code, Chapter A-E 5.02, U.S. Public Land Survey Monument Record (3) (a) (b) (c) (d) (e) (f) (g) (h) (i). An additional sheet may be added if necessary to conform with said requirements.

(a) Corner location: Township 32 North

Range 6 East

Town/City/Village TN. OF MERRILL

County LINCOLN

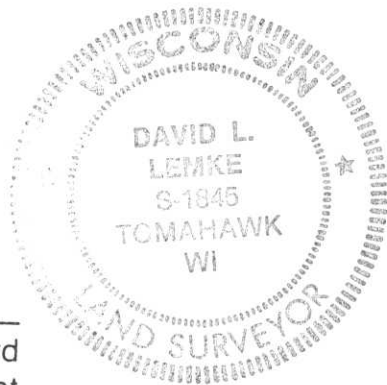
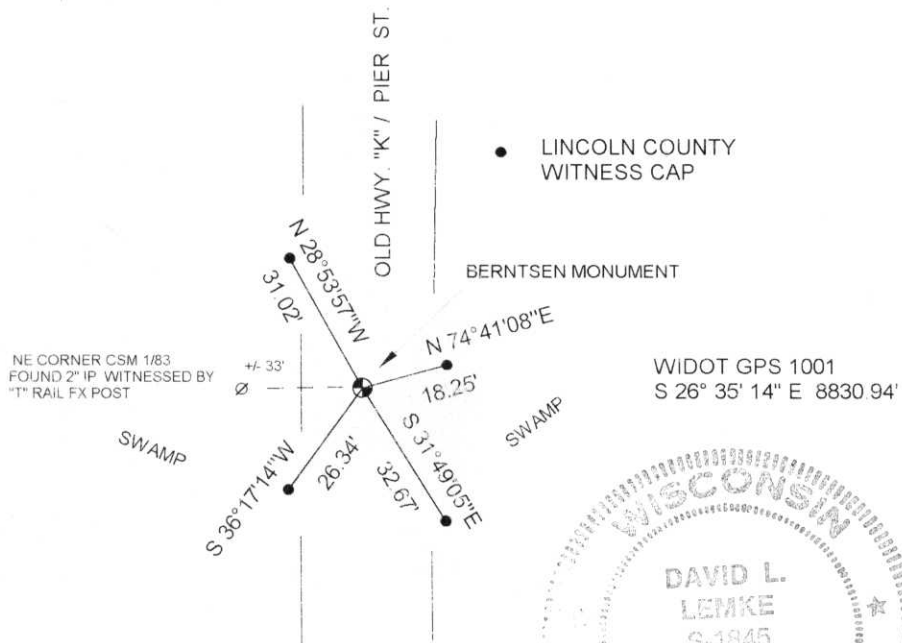


(b) (f) (g) (h) Description of monument found at this corner and if it was accepted, state all evidence (material, testimonial, occupational, plats, records, other monuments) used as a basis for accepting. If not accepted or if nothing was found, state evidence used as basis for establishing location. If reestablished through lost corner proportionate methods, indicate all monuments, distances and directions used to establish.

CORNER HISTORY ONFILE IN COUNTY SURVEYORS OFFICE

APRIL 1997 EXCAVATED ROAD EASTERLY OF A FOUND 2" IRON PIPE WITNESSED BY "T" RAIL FENCE POST. EXCAVATED AREA WAS CLEAR OF BEBRIS EXCEPT FOR A LARGE PIECE OF CEDAR. MEASURED FROM THE FOUND 2" IRON PIPE TO THE PIECE OF CEDAR A DISTANCE CAME IN AT ABOUT 34'. IN JUNE OF 1973 CHARLES OFFERMAN SURVEYED THE NE $\frac{1}{4}$  SE $\frac{1}{4}$  OF SECTION 14 - CSM V.1 PG.83 - I SET A BERNTSEN MONUMENT AT THE CORNER LOCATION SHOWN BY HIS SURVEY.

(c) (d) (e) Plan view of corner with ties to at least 4 witness monuments. If in disagreement with previously established corner, show the distances between the two corners and also indicate the ties to the disputed corner.



(i) I, DAVID L. LEMKE S-1845  
 (type or print name) certify that the corner location on this record was determined by me or under my direction and control and that this U.S. Public Land Survey Monument Record is correct and complete to the best of my knowledge and belief.

*David L. Lemke*  
 \_\_\_\_\_  
 Signature

MAY 30 1997  
 \_\_\_\_\_  
 Date

RECEIVED AT LINCOLN COUNTY  
 COURTHOUSE THIS 2nd DAY  
 OF June 1997  
*Pat Priske*  
 TAX DESCRIPTION OFFICE

Index No. X-21