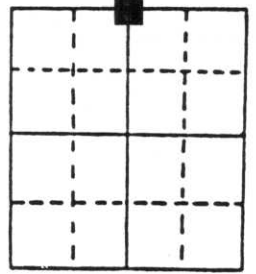


U.S. PUBLIC LAND SURVEY MONUMENT RECORD

Note: This form is intended and designed to fulfill all requirements of Wisconsin Administrative Code, Chapter A-E 7.08 U.S. Public Land Survey Monument Record (3) (a) (b) (c) (d) (e) (f) (g) (h) (i). An additional sheet may be added if necessary to conform with said requirements.

(a) Corner location: Township 32 North
 Range 6 East/West

Town Rock Falls
 County Lincoln

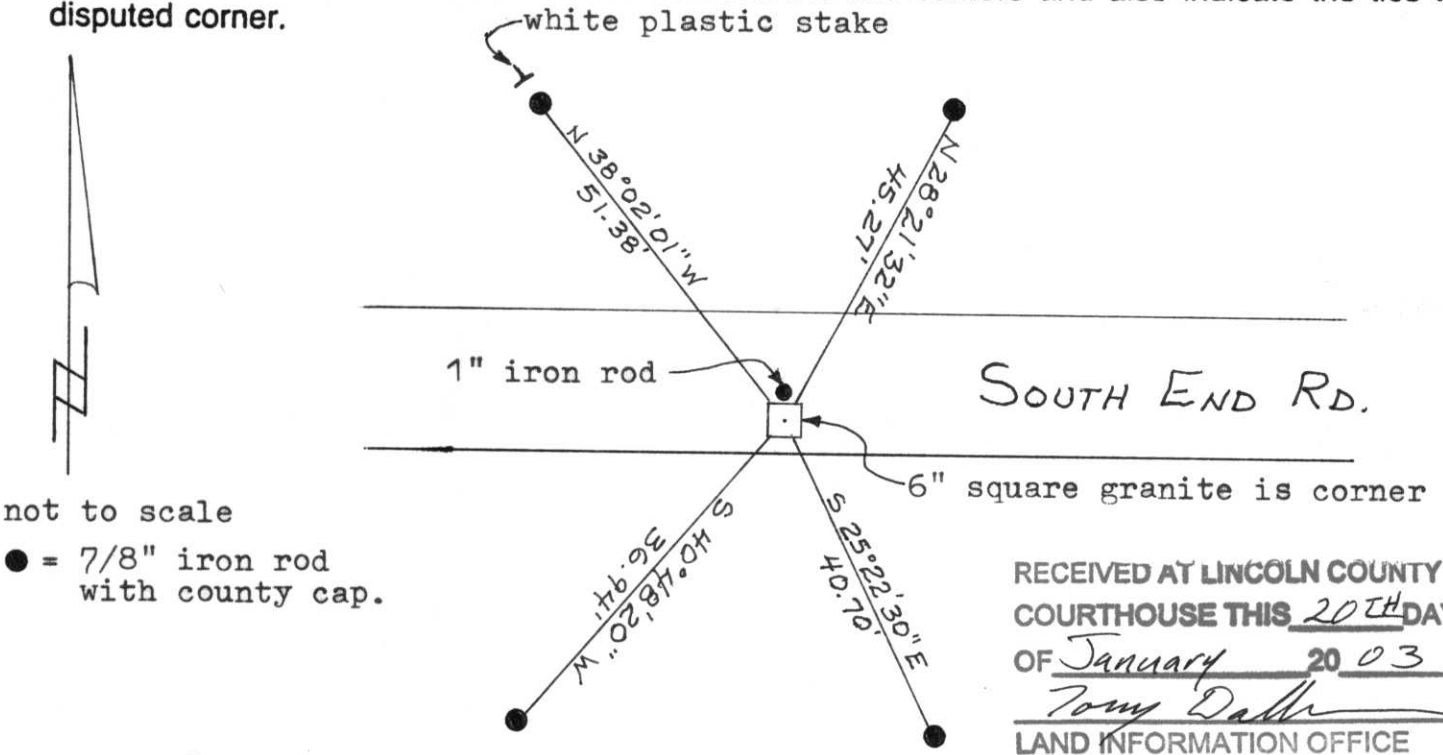


Section 17

(b) (f) (g) (h) Description of monument found at this corner and if it was accepted, state all evidence (material, testimonial, occupational, plats, records, other monuments) used as a basis for accepting. If not accepted or if nothing was found, state evidence used as basis for establishing location. If reestablished through lost corner proportionate methods, indicate all monuments, distances and directions used to establish. Indicate type of monument found or set and sign post.

Original Gov't. Survey: Apr. 1852 by A. G. & F. S. Ellis, set wood post for corner with bearings, hemlock 16 N 45° W 38 links and fir 8 S 45° E 17 links. On a survey of the town of Rock Falls by Francis Fox map dated 1943, he set a stone for the corner & offset irons north & south, 24.75'. Using a backhoe operated by Jerrald Laak, found a 6" square gray & black granite, 9" below surface of road, 4.75' south of the centre-line of the road. I set a 1" iron rod on the north side of the granite for location purposes. Did not find Fox's offset iron north and the iron south was lying on the ground. I witnessed the granite corner as shown below.

(c) (d) (e) Plan view of corner with ties to at least 4 witness monuments. If in disagreement with previously established corner, show the distances between the two corners and also indicate the ties to the disputed corner.



not to scale
 ● = 7/8" iron rod with county cap.

RECEIVED AT LINCOLN COUNTY COURTHOUSE THIS 20TH DAY OF January 20 03
Tom Dahl
 LAND INFORMATION OFFICE

(i) I, Lester J. Schmit
 (type or print name) certify that the corner location on this record was determined by me or under my direction and control and that this U.S. Public Land Survey Monument Record is correct and complete to the best of my knowledge and belief.

Lester J. Schmit 16 Jan 03
 Signature Date



Index No. I-7