

U S PUBLIC LAND SURVEY MONUMENT RECORD

NOTE: This form is intended and designed to fulfill all requirements of Wisconsin Administrative Code, Chapter A-E 7.08 U.S. Public Land Survey Monument Record (3) (a-i)

A-E 7.08(3)(a) Identity of corner:
SOUTH 1/4 CORNER SECTION 07,
TOWNSHIP 32 NORTH,
RANGE 06 EAST OF THE 4TH PM,
TOWN OF ROCK FALLS,
COUNTY OF LINCOLN

WISCORS - LINCOLN COUNTY
N: 153,270.074 USft (153,270.280)
E: 367,722.841 USft (367,722.829)
Datum: NAD83 (2011)
GNSS Method RTN - Direct
GNSS Control WISCORS VRS



The coordinate value shown has been verified by the average of two or more GPS observations at a markedly different time. Coordinates shown in parenthesis are provided by Lincoln County.

A-E 7.08(3)(b)

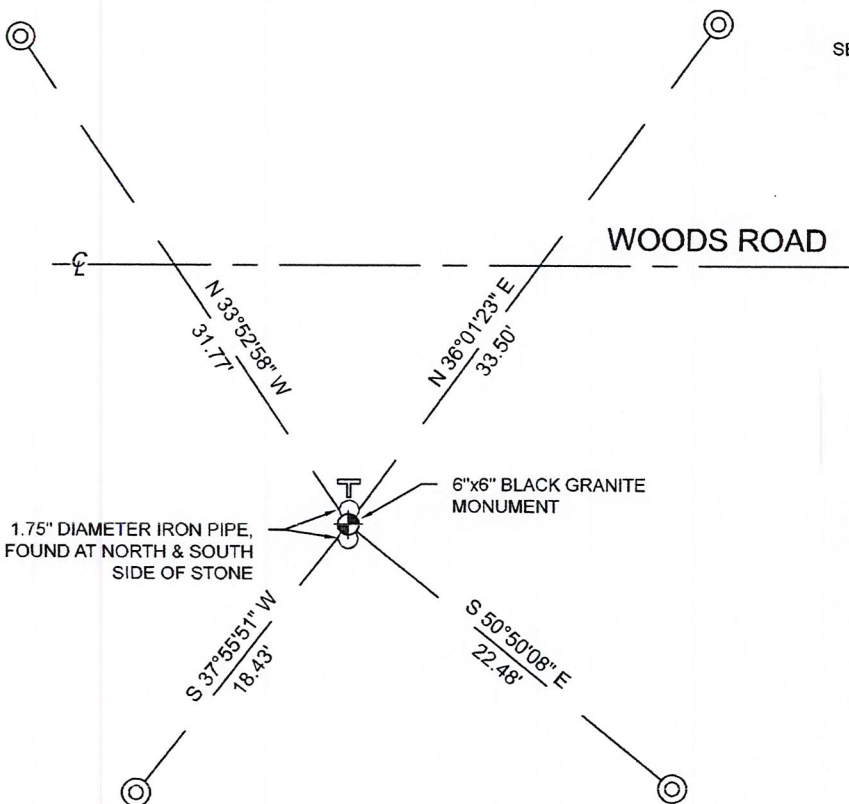
Original Surveyor: Albert G. and Fredrick S. Ellis

Date of Original Survey	Commenced:	April 16, 1852	Original Accessories:
	Completed:	April 29, 1852	Sugar 12 S 46° W 17 Links
			Sugar 7 N 55° W 16 Links

1941 - Francis X. Fox (aka Francis X. Fuchs) - Survey of TWP., 32 & 33 N. ~ R.6 E. Town of Rock Falls - indicates "set corners to all forties on all quarter & section lines" on Map M136A.

October 26, 2022 - While performing the 2022 Lincoln County PLSS Corner Remonumentation and GPS Services project, I found a 6" x 6" black granite stone near the computed position provided by Lincoln County. The monument is ±14 feet south of a woods road centerline. I established 4 new reference monuments as shown below.

A-E 7.08(3)(c)(d) Plan view of corner with references to at least 4 witness monuments.

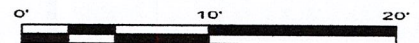


BEARINGS LISTED TO THE NEAREST SECOND ARE REFERENCED TO WISCONSIN COUNTY COORDINATE REFERENCE SYSTEM - LINCOLN COUNTY ZONE. ALL OTHER BEARINGS ARE MAGNETIC

RECEIVED BY LINCOLN COUNTY SURVEYOR THIS 27TH DAY OF December 20 22
Jeffrey DeMuth
COUNTY SURVEYOR

LEGEND

- 6" x 6" black granite monument, found
- 7/8" diameter X 30" long - iron rod with 2" diameter aluminum cap, set
- Vinyl T-post, set ±2.7 feet north of corner



A-E 7.08(3)(e) 1852 Surveyor set a post, 1941 Surveyor set a granite stone monument. I found a 6" x 6" black granite stone.

A-E 7.08(3)(f) I accept this monument as a FOUND PERPETUATED LOCATION of the corner.

A-E 7.08(3)(g)(h) This corner was not determined through lost-corner-proportionate methods.

A-E 7.08(3)(i) I, Jeffrey L. DeMuth, Professional Land Surveyor No. S-2656, hereby certify that the corner location on this record was determined by the Lincoln County Surveyor, and the monuments found or set as shown hereon were measured by me or under my direction and control, and that this U.S. Public Land Survey Monument Record is correct and complete to the best of my knowledge, and belief.

SIGNATURE

December 14, 2022

DATE



I-3

REPORT

2022-Lincoln County PLSS Corner Remonumentation and GPS Services

Wisconsin Corner Point Identification Number: 43206070020

Surveyor: Jeffrey L. DeMuth – S2656

Corner monument: Found 6" x 6" black granite stone.

Field Book: Cardinal North – Lincoln Co. Remon. – 2022-00

Page: 59

Horizontal Datum: WisCRS – Lincoln County Zone – NAD83(2011)

Date / time of initial measurement:

October 26, 2022 - Start 09:36:45 CDT – End 09:56:53 CDT

Reference monuments:

4 – Set - 7/8" diameter X 30" long iron rods with 2" diameter Lincoln Co. aluminum cap.

2 – Found - 1.75" diameter iron pipes, one on north side of monument, one on the south side.

Coordinate Table

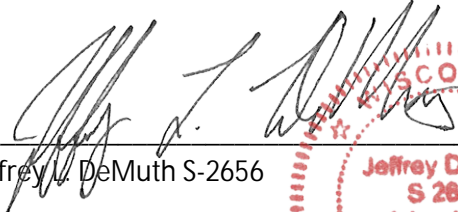
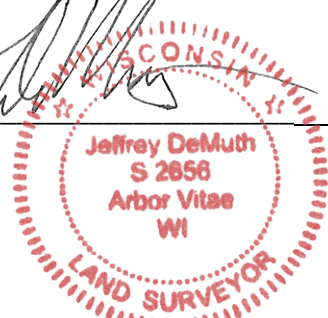
	County Provided	2022 Measurement	Difference
North	153270.280	153270.074	0.21
East	367722.829	367722.841	-0.01

Observed coordinates match with existing coordinates within reason.

Request Data Log for more information.

Additional Notes:

Corner falls ±14' south of woods road centerline.


 Jeffrey L. DeMuth S-2656
 
 November 15, 2022
 Date

43206070020_Mon-N



43206070020_North



43206070020_West



43206070020_South



43206070020_East

