

LINCOLN COUNTY U.S. PUBLIC LAND CORNER RESTORATION

The Center of Section 8, T. 32 N., R. 6 E.

4320608 2020

Corner was: (check all that apply)

- Restored through acceptance of an obliterated evidence location.
- Restored through acceptance of a found perpetuated location.
- Determined to be lost and re-established through proportionate methods.
(Show bearings and distances to PLSS corners used for proportioning, and show original distances).
- Restored/recovered/re-established in a location that differs from a previously established position.
(Show difference in plan view below).
- Check here if addition information is shown on the reverse side of this form.

Describe record evidence, recovered physical evidence, occupational evidence, testimonial evidence and all other evidence considered in the recovery/restoration of the corner.


This corner was not monumented in the original government survey. In the 1940's, Francis Fox surveyed this portion of the Town of Rock Falls and set marked, granite stones for section corners, quarter corner and centers of sections. 06/01/05 D. Tlusty found a 6" x 6" x 28"± granite stone with a polished top with chiseled "+" and "C 8" on top. Stone was frost heaved. Accepted the stone found as the corner monument established by Francis Fox. Re-dug the stone so the top is now 5" above ground. 09/10/05 marked and measured ties shown below.

Physical description of the monument set:

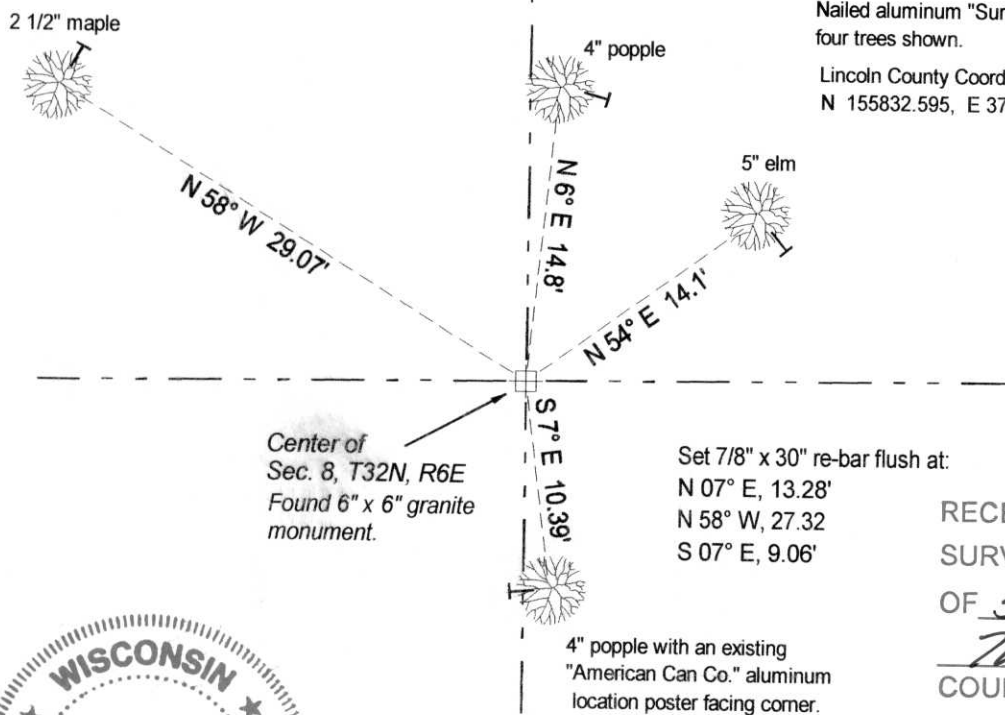
For the corner, I re-set the existing 6" x 6" granite stone.

Describe the accessories used to perpetuate the corner. Include a plan view drawing and accessories found/set. Describe measuring point on bearing trees. Show any topographic features that would aid in future recovery of the corner.

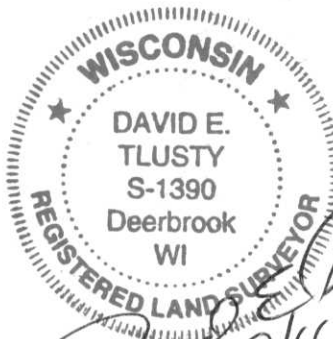
LEGEND

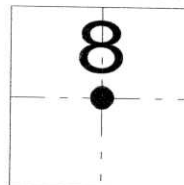
Bearings are magnetic with hand compass.
BT distances are measured to an aluminum nail in a low blaze shown as: 
Nailed aluminum "Survey Marker" signs to the four trees shown.

Lincoln County Coordinates for Ctr Sec 8:
N 155832.595, E 373041.172



RECEIVED BY LINCOLN COUNTY
SURVEYOR THIS 19TH DAY
OF September 20 05
Tony Dahl
COUNTY SURVEYOR


David E. Tlusty
 9/16/05



● = corner perpetuated

The Center
of Section 8,
T. 32 N., R. 6 E.,
Lincoln County, WI

I, David E. Tlusty, Wisconsin Registered Land Surveyor s-1390, certify that the corner location on this record was determined by me and that this U.S. Public Land Survey Monument Record is correct to the best of my knowledge and belief.

6-7