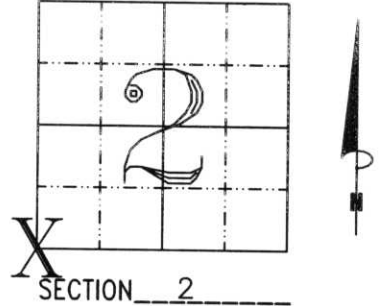


U.S. PUBLIC LAND SURVEY MONUMENT RECORD

NOTE: THIS FORM IS INTENDED AND DESIGNED TO FULFILL ALL REQUIREMENTS OF WISCONSIN ADMINISTRATIVE CODE, CHAPTER A-E 7.08 U.S. PUBLIC LAND SURVEY MONUMENT RECORD (3) (a) (b) (c) (d) (e) (f) (g) (h) (i). AN ADDITIONAL SHEET MAY BE ADDED IF NECESSARY TO CONFORM WITH SAID REQUIREMENTS.

(a) CORNER LOCATION: TOWNSHIP 32 NORTH
 RANGE 6 EAST/~~WEST~~
 TOWN/~~CITY/VILLAGE~~ MERRILL
 COUNTY LINCOLN



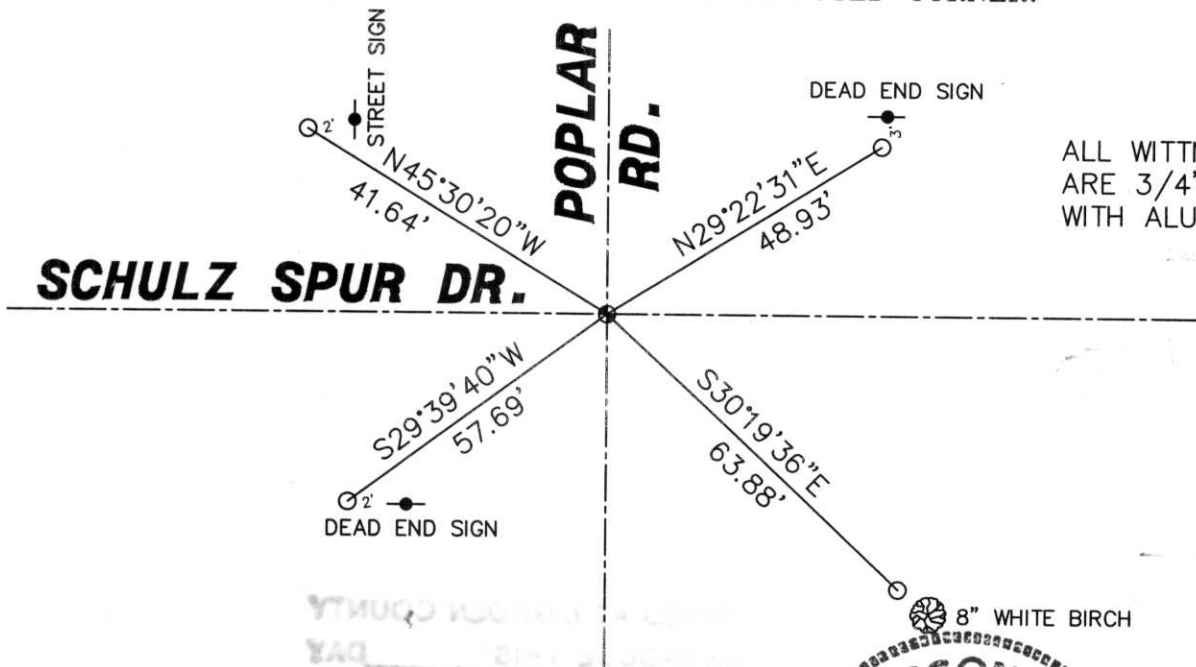
(b) (f) (g) (h) DESCRIPTION OF MONUMENT FOUND AT THIS CORNER AND IF IT WAS ACCEPTED, STATE ALL EVIDENCE (MATERIAL, TESTIMONIAL, OCCUPATIONAL, PLATS, RECORDS, OTHER MONUMENTS) USED AS BASIS FOR ACCEPTING. IF NOT ACCEPTED OR IF NOTHING WAS FOUND, STATE EVIDENCE USED AS BASIS FOR ESTABLISHING LOCATION. IF REESTABLISHED THROUGH LOST CORNER PROPORTIONATE METHODS, INDICATE ALL MONUMENTS, DISTANCES AND DIRECTIONS USED TO ESTABLISH. INDICATE TYPE OF MONUMENT FOUND OR SET AND SIGN POST.

DUG THROUGH 10" BLACKTOP WITH COUNTY BACKHOE. DUG INTO UNDISTURBED SOIL. FOUND NO EVIDENCE OF CORNER. HELD CENTER LINE INTERSECTION AS BEST EVIDENCE FOR CORNER. SET LINCOLN COUNTY BERNTSEN MONUMENT, 6" BELOW SURFACE. TIED OUT.

OFERMAN SECTION SUMMARY OF SECTION 3 AND CSM BY NUTTER (SECTION 2) HAVE DISTANCES TO THIS CORNER FROM THE W 1/4. THEIR DISTANCES DIFFER BY 10 FEET. FOUND NO EVIDENCE THIS CORNER WAS SET BEFORE DIGGING.

RECEIVED AT LINCOLN COUNTY
 COURTHOUSE THIS 1st DAY
 OF June 2000
Jerry Dallman
 LAND INFORMATION OFFICE

(c) (d) (e) PLAN VIEW OF CORNER WITH TIES TO AT LEAST 4 WITNESS MONUMENTS. IF IN DISAGREEMENT WITH PREVIOUSLY ESTABLISHED CORNER, SHOW THE DISTANCES BETWEEN THE TWO CORNERS AND ALSO INDICATE THE TIES TO THE DISPUTED CORNER.



ALL WITNESS MONUM
 ARE 3/4" x 30" REE
 WITH ALUMINUM CAP

(i) I, DAVID L. OSTERBRINK RLS NO. S-2014
 (TYPE OR PRINT NAME) CERTIFY THAT THE CORNER
 LOCATION ON THIS RECORD WAS DETERMINED BY ME
 OR UNDER MY DIRECTION AND CONTROL AND THAT
 THIS U.S. PUBLIC LAND SURVEY MONUMENT RECORD
 IS CORRECT AND COMPLETE TO THE BEST OF MY
 KNOWLEDGE AND BELIEF.

David L. Osterbrink
 SIGNATURE 6-1-00
 DATE



INDEX NO. E-17



2002 10 16



2002.10.16



2002 10 16



2002 10 16