

U.S. PUBLIC LAND SURVEY MONUMENT RECORD

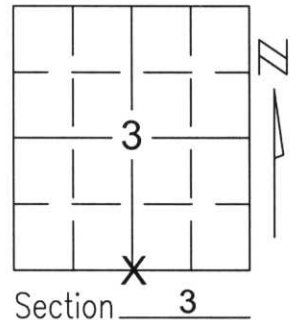
Note: This form is intended and designed to fulfill all requirements of Wisconsin Administrative Code, Chapter A-E 5.02, U.S. Public Land Survey Monument Record (3)(a)(b)(c)(d)(e)(f)(g)(h)(i). An additional sheet may be added if necessary to conform with said requirements.

(a) Corner location: Township 32 North

Range 6 East

Town/City/Village MERRILL

County LINCOLN



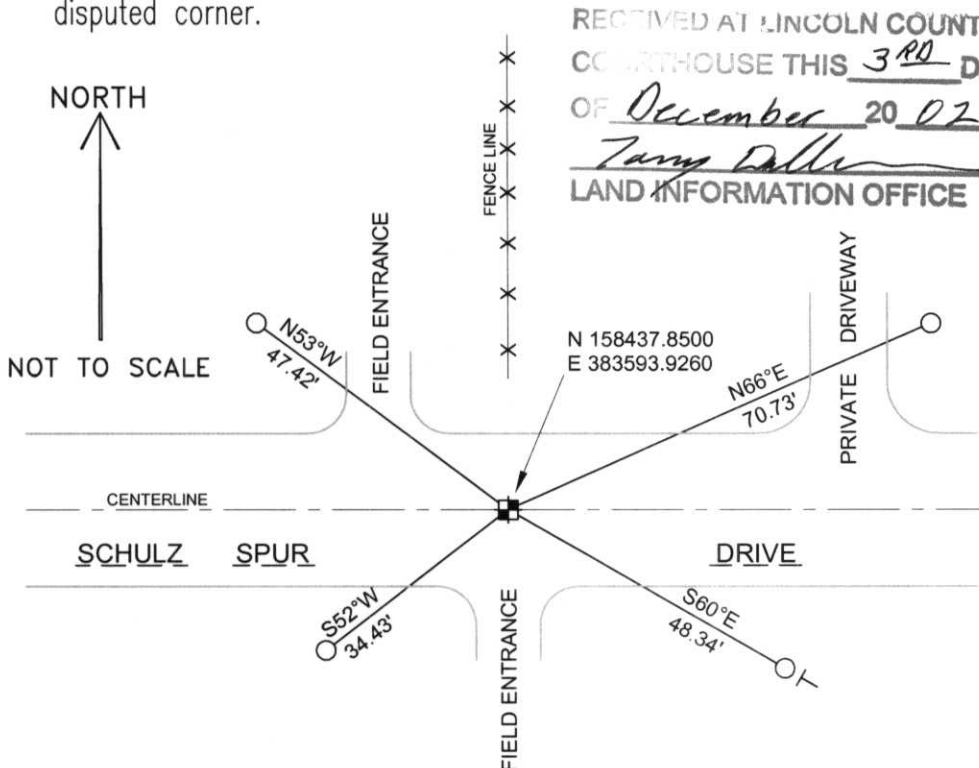
(b)(f)(g)(h) Description of monument found at this corner and if it was accepted, state all evidence (material, testimonial, occupational, plats, records, other monuments) used as a basis for accepting. If not accepted or if nothing was found, state evidence used as basis for establishing location. If reestablished through lost corner proportionate methods, indicate all monuments, distances and directions used to establish.

THE POSITION OF THE CORNER WAS DETERMINED BY USING THE FOUND STONE AT THE NORTH 1/4 CORNER OF SECTION 3, AND A FENCE LINE ALONG THE NORTH-SOUTH 1/4 LINE AND THE CENTERLINE OF SCHULZ SPUR DRIVE.

THE AREA WAS EXCAVATED BY THE USE OF A BACKHOE. NO EVIDENCE OF A STONE OR POST COULD BE FOUND. THE CENTERLINE OF SCHULZ SPUR DRIVE AND THE FENCE LINE HELD AS BEST EVIDENCE.

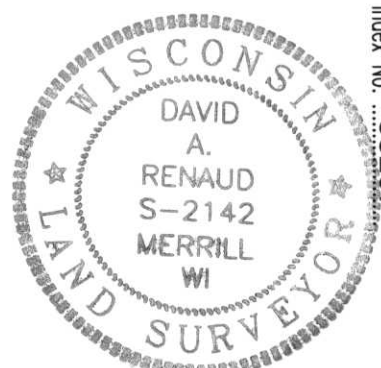
SET BERNTSEN MONUMENT AND TIED OUT MONUMENT TO PERPETUATE CORNER LOCATION.

(c)(d)(e) Plan view of corner with ties to at least 4 witness monuments. If in disagreement with previously established corner, show the distances between the two corners and also indicate the ties to the disputed corner.



(i) I, David A. Renaud, RLS certify that the corner location on this record was determined by me or under my direction and control and that this U.S. Public Land Survey Monument Record is correct and complete to the best of my knowledge and belief.

David Renaud 11-29-02
 Signature Date



Index No. 33267

E-15