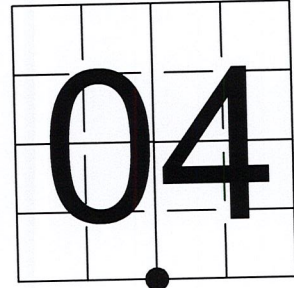


# U S PUBLIC LAND SURVEY MONUMENT RECORD

NOTE: This form is intended and designed to fulfill all requirements of Wisconsin Administrative Code, Chapter A-E 7.08 U.S. Public Land Survey Monument Record (3) (a-i)

A-E 7.08(3)(a) Identity of corner:  
 SOUTH 1/4 CORNER SECTION 04,  
 TOWNSHIP 32 NORTH,  
 RANGE 06 EAST OF THE 4TH PM,  
 TOWN OF ROCK FALLS,  
 COUNTY OF LINCOLN

WISCRS - LINCOLN COUNTY  
 N: 158,424.209 USft (158,424.199)  
 E: 378,329.330 USft (378,329.300)  
 Datum: NAD83 (2011)  
 GNSS Method RTN - Direct  
 GNSS Control WISCORS VRS



The coordinate value shown has been verified by the average of two or more GPS observations at a markedly different time. Coordinates shown in parenthesis are provided by Lincoln County.

A-E 7.08(3)(b)

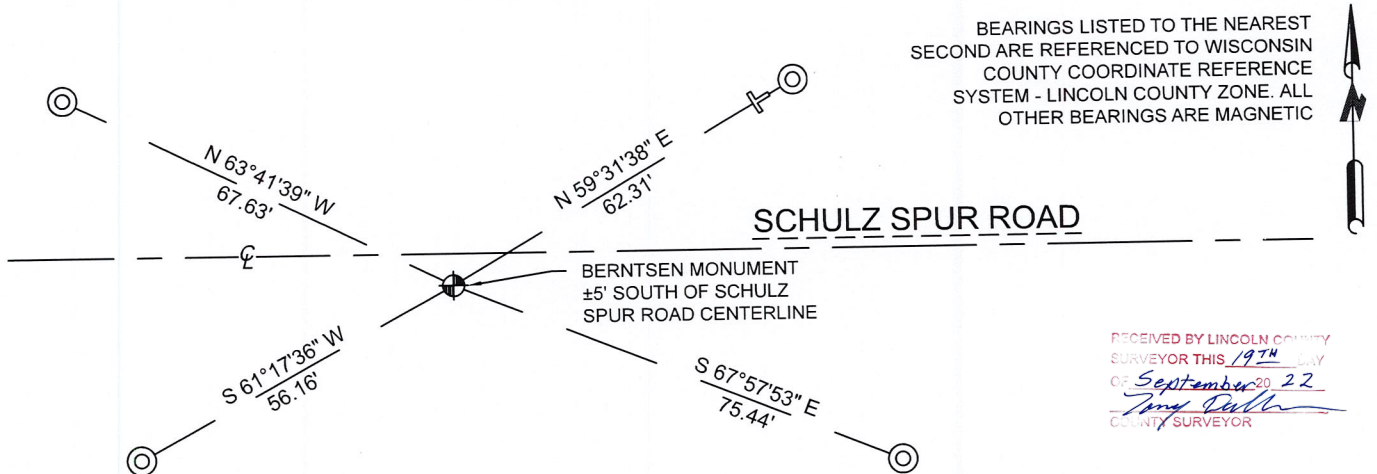
Original Surveyor: Albert G. & Fredrick.S. Ellis

Date of Original Survey	Commenced:	April 16, 1852	Original Accessories:		
	Completed:	April 29, 1852	Sugar	7	S 8° E 20 Links
			Hemlock	18	N 20° E 29 Links

1941 - Francis X. Fox - Survey of TWP., 32 & 33 N. ~ R.6 R. Town of Rock Falls - indicates "set corners to all forties on all quarter & section lines" on Map M136A.

May 23, 2022 - While performing the 2022 Lincoln County PLSS Corner Remonumentation and GPS Services project, I went to the coordinate position provided by Lincoln County, I made a careful search of the area and found no evidence of the corner or witnesses. The County provided location is 5 feet south of Schulz Spur Road centerline and 2 feet west of a fence line to the south. Under the direction of Lincoln County, I restored the corner using coordinates provided by Lincoln County and set a 29.5" long Berntsen cast aluminum monument with a 4 diameter aluminum cap stamped to identify the corner position. I established 4 new reference monuments as shown below.

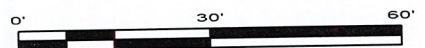
A-E 7.08(3)(c)(d) Plan view of corner with references to at least 4 witness monuments.



RECEIVED BY LINCOLN COUNTY SURVEYOR THIS 19TH DAY OF September 20 22  
*Tom DeMuth*  
 COUNTY SURVEYOR

## LEGEND

- Berntsen cast aluminum monument, set
- 7/8" diameter X 30" long - iron rod with 2" diameter aluminum cap, set
- Vinyl T-post, set ±1 foot SW of witness



A-E 7.08(3)(e) 1852 Surveyor set a post, 1941 Surveyor did not describe the monument. I set a Berntsen cast aluminum monument at coordinates provided by Lincoln County.

A-E 7.08(3)(f) I restored the corner through ACCEPTANCE OF AN OBLITERATED LOCATION.

A-E 7.08(3)(g)(h) This corner was not determined through lost-corner-proportionate methods.

A-E 7.08(3)(i) I, Jeffrey L. DeMuth, Professional Land Surveyor No. S-2656, hereby certify that the corner location on this record was determined by the Lincoln County Surveyor, and the monuments found or set as shown hereon were measured by me or under my direction and control, and that this U.S. Public Land Survey Monument Record is correct and complete to the best of my knowledge, and belief.



SIGNATURE

September 16, 2022

DATE

## REPORT

### 2022-Lincoln County PLSS Corner Remonumentation and GPS Services

Wisconsin Corner Point Identification Number: 43206040020

Surveyor: Jeffrey L. DeMuth – S2656

Corner monument: Set Berntsen cast aluminum monument – 4" diameter cap x 29.5" long, at coordinates provided.

Field Book: Cardinal North – Lincoln Co. Remon. – 2022-00

Page: 11

Horizontal Datum: WisCRS – Lincoln County Zone – NAD83(2011)

Date / time of initial measurement:

June 27, 2022 - Start 10:56:05 CDT – End 11:04:05 CDT

Reference monuments:

4 – Set - 7/8" diameter X 30" long iron rods with 2" diameter Lincoln Co. aluminum cap.

#### Coordinate Table

	County Provided	2022 Measurement	Difference
North	158424.199	158424.209	-0.01
East	378329.300	378329.330	-0.03

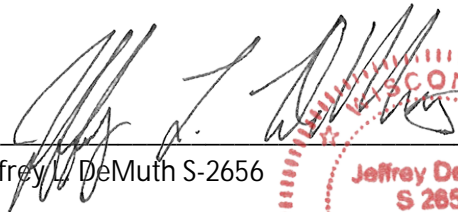
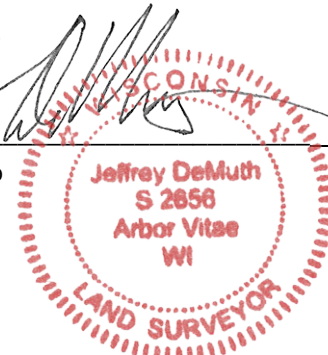
Established coordinates match existing calculated coordinates within reason.

Request Data Log for more information.

#### Additional Notes:

Corner falls  $\pm 5'$  south of Schultz Spur Road centerline and  $\pm 2'$  west of an old fence line heading south.

Email from County Surveyor indicates the position was determined by "doubling through Fox's Center 1/4 corner, and Fox's Center South 1/16<sup>th</sup> corner of Section 4".

  
 Jeffrey L. DeMuth S-2656
 
 September 16, 2022  
 Date

43206040020\_Mon-N



43206040020\_North



43206040020\_West



43206040020\_South



43206040020\_East

