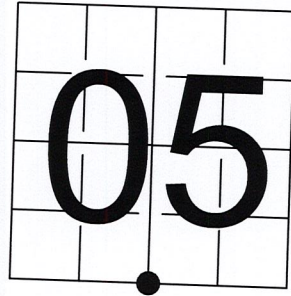


U S PUBLIC LAND SURVEY MONUMENT RECORD

NOTE: This form is intended and designed to fulfill all requirements of Wisconsin Administrative Code, Chapter A-E 7.08 U.S. Public Land Survey Monument Record (3) (a-i)

A-E 7.08(3)(a) Identity of corner:
 SOUTH 1/4 CORNER SECTION 05,
 TOWNSHIP 32 NORTH,
 RANGE 06 EAST OF THE 4TH PM,
 TOWN OF ROCK FALLS,
 COUNTY OF LINCOLN

WISCRS - LINCOLN COUNTY
 N: 158,478.289 USft (158,478.379)
 E: 373,074.483 USft (373,074.309)
 Datum: NAD83 (2011)
 GNSS Method RTN - Direct
 GNSS Control WISCORS VRS



The coordinate value shown has been verified by the average of two or more GPS observations at a markedly different time. Coordinates shown in parenthesis are provided by Lincoln County.

A-E 7.08(3)(b)

Original Surveyor: Albert G. & Fredrick.S. Ellis

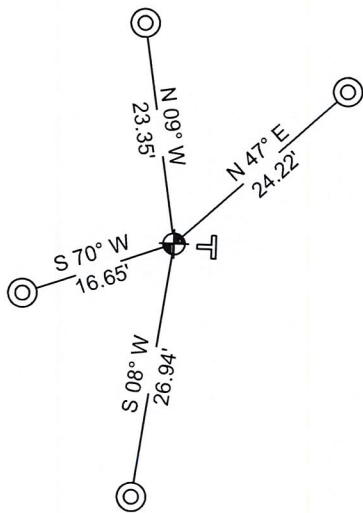
Date of Original Survey Commenced: April 16, 1852
 Completed: April 29, 1852

Original Accessories:
 Birch 18 N 32° W 33 Links
 Fir 8 S 33° E 21 Links

1941 - Francis X. Fox - Survey of TWP., 32 & 33 N. ~ R.6 R. Town of Rock Falls - indicates "set corners to all forties on all quarter & section lines" on Map M136A.

May 23, 2022 - While performing the 2022 Lincoln County PLSS Corner Remonumentation and GPS Services project, I found a 5" x 5" black granite monument near the computed position provided by Lincoln County. I established 4 new reference monuments as shown below.

A-E 7.08(3)(c)(d) Plan view of corner with references to at least 4 witness monuments.



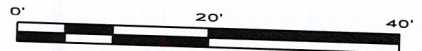
BEARINGS LISTED TO THE NEAREST SECOND ARE REFERENCED TO WISCONSIN COUNTY COORDINATE REFERENCE SYSTEM - LINCOLN COUNTY ZONE. ALL OTHER BEARINGS ARE MAGNETIC



RECEIVED BY LINCOLN COUNTY SURVEYOR THIS 19TH DAY OF September 20 22
Jeffrey DeMuth
 COUNTY SURVEYOR

LEGEND

- 5" x 5" black granite monument, found
- 7/8" diameter X 30" long - iron rod with 2" diameter aluminum cap, set
- Vinyl T-post, set ±1 foot east of monument

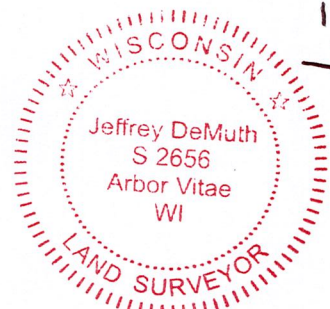


A-E 7.08(3)(e) 1852 Surveyor set a post, 1941 Surveyor did not describe the monument. I found a granite stone.

A-E 7.08(3)(f) I accept this monument as a FOUND PERPETUATED LOCATION of the corner.

A-E 7.08(3)(g)(h) This corner was not determined through lost-corner-proportionate methods.

A-E 7.08(3)(i) I, Jeffrey L. DeMuth, Professional Land Surveyor No. S-2656, hereby certify that the corner location on this record was determined by the Lincoln County Surveyor, and the monuments found or set as shown hereon were measured by me or under my direction and control, and that this U.S. Public Land Survey Monument Record is correct and complete to the best of my knowledge, and belief.



SIGNATURE

Jeffrey L. DeMuth

September 16, 2022

DATE

REPORT

2022-Lincoln County PLSS Corner Remonumentation and GPS Services

Wisconsin Corner Point Identification Number: 43206050020

Surveyor: Jeffrey L. DeMuth – S2656

Corner monument: Found 5"x 5" black granite stone.

Field Book: Cardinal North – Lincoln Co. Remon. – 2022-00

Page: 33

Horizontal Datum: WisCRS – Lincoln County Zone – NAD83(2011)

Date / time of initial measurement:

June 27, 2022 - Start 14:42:12 CDT – End 16:10:19 CDT

Reference monuments:

4 – Set - 7/8" diameter X 30" long iron rods with 2" diameter Lincoln Co. aluminum cap.

Coordinate Table

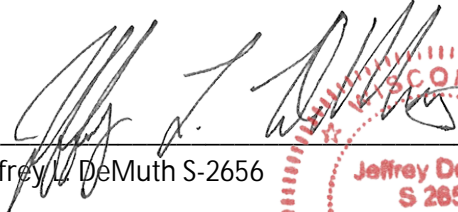
	County Provided	2022 Measurement	Difference
North	158478.379	158478.289	0.09
East	373074.309	373074.483	-0.17

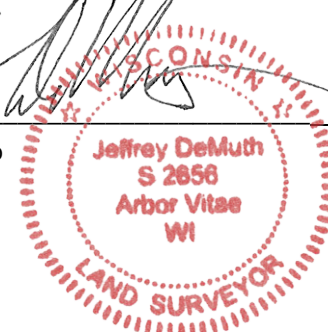
Observed coordinates match existing calculated coordinates within reason.

Request Data Log for more information.

Additional Notes:

Monument is in the forest with no evidence of occupation. Large rocks were placed around the monument by others.



 Jeffrey L. DeMuth S-2656
 
 September 16, 2022

 Date

43206050020_Mon-N



43206050020_North



43206050020_West



43206050020_South



43206050020_East

