

U.S. PUBLIC LAND SURVEY MONUMENT RECORD

NOTE: THIS FORM IS INTENDED AND DESIGNED TO FULFILL ALL REQUIREMENTS OF WISCONSIN ADMINISTRATIVE CODE, CHAPTER A-E 7.08, U.S. PUBLIC LAND SURVEY MONUMENT RECORD (3) (A) (B) (C) (D) (E) (F) (G) (H) (I). AN ADDITIONAL SHEET MAY BE ADDED IF NECESSARY TO CONFORM WITH SAID REQUIREMENTS.

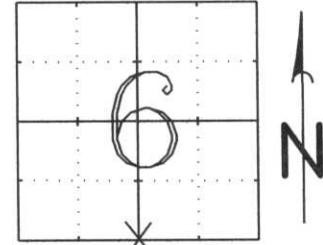
LINCOLN COUNTY

(A) SECTION 6

TOWNSHIP 32 NORTH

RANGE 6 EAST

TOWN, CITY, VILLAGE: ROCK FALLS

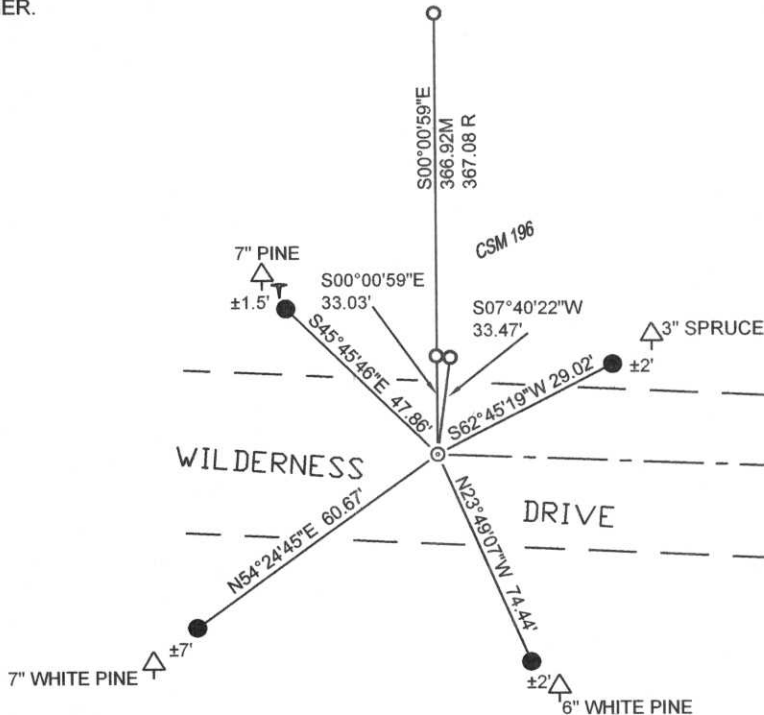


INDICATE CORNER LOCATION BY X

(B) (F) (G) (H) DESCRIPTION OF MONUMENT FOUND AT THIS CORNER AND IF IT WAS ACCEPTED, STATE ALL EVIDENCE (MATERIALS, TESTIMONIAL, OCCUPATIONAL, PLATS, RECORDS, OTHER MONUMENTS) USED AS A BASIS FOR ACCEPTING. IF NOT ACCEPTED OR IF NOTHING WAS FOUND, STATE EVIDENCE USED AS A BASIS FOR ESTABLISHING LOCATION. IF REESTABLISHED THROUGH LOST CORNER PROPORTIONATE METHODS, INDICATE ALL MONUMENTS, DISTANCES, AND DIRECTIONS USED TO ESTABLISH.

NO MONUMENT FOUND AT CORNER. RECREATED VREELAND SURVEYS CSM196, 200, 201, 202, AND 204 TO VERIFY AND LOCATE THIS CORNER AND SOUTHEAST CORNER OF SECTION. HELD ALIGNMENT AND DISTANCE FROM WEST LINE OF CSM 196 TO SET PK AT THIS CORNER.

(C) (D) (E) PLAN VIEW OF CORNER WITH TIES TO AT LEAST 4 WITNESS MONUMENTS. IF IN DISAGREEMENT WITH PREVIOUSLY ESTABLISHED CORNER, SHOW THE DISTANCES BETWEEN THE TWO CORNERS AND ALSO INDICATE THE TIES TO THE DISPUTED CORNER.



- ⊙ S1/4 COR SET PK NAIL
- 7/8" X 30" REBAR W/CAP
- ↑ WHITE VINYL POST
- EXISTING 1" IRON PIPE AS PER CSM 196 VOLUME 1 PAGE 231
- ⊙ BERNTSEN MONUMENT SET

RECEIVED BY LINCOLN COUNTY SURVEYOR THIS 10TH DAY OF November 2006
Tommy Dahl
 COUNTY SURVEYOR

(I) I, GENE J. WADZINSKI RLS 2400
 (TYPE OR PRINT NAME, LICENSE #) CERTIFY THAT THE CORNER LOCATION ON THIS RECORD WAS DETERMINED BY ME OR UNDER MY DIRECTION AND CONTROL AND THAT THIS U.S. PUBLIC LAND SURVEY MONUMENT RECORD IS CORRECT AND COMPLETE TO THE BEST OF MY KNOWLEDGE AND BELIEF.

SIGNATURE *Gene J. Wadzinski* DATE 11/2/06

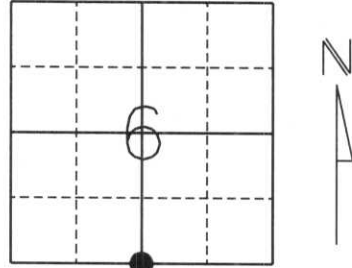


SEAL OR STAMP

U.S. PUBLIC LAND SURVEY MONUMENT RECORD

Note: This form is intended and designed to fulfill all requirements of Wisconsin Administrative Code, Chapter A-E 5.02, U.S. Public Land Survey Monument Record (3) (a) (b) (c) (d) (e) (f) (g) (h) (i). An additional sheet may be added if necessary to conform with said requirements.

(a) Corner location: Township 32 North
 Range 6 East
 Town/City/Village ROCK FALLS
 County LINCOLN



Section 6

(b) (f) (g) (h) Description of monument found at this corner and if it was accepted, state all evidence (material, testimonial, occupational, plats, records, other monuments) used as a basis for accepting. If not accepted or if nothing was found, state evidence used as a basis for establishing location. If reestablished through lost corner proportionate methods, indicate all monuments, distance and directions used to establish.

History of original corner establishment:

Original Survey was April, 1852 by A.G. & F.S. Ellis. Original corner was a wooden post with bearing trees:

- 7" Birch S29°W, 11 lks.
- 7" Birch N63°E, 14 lks.

Unknown person and date that set a 6"x6" Red Granite Stone.

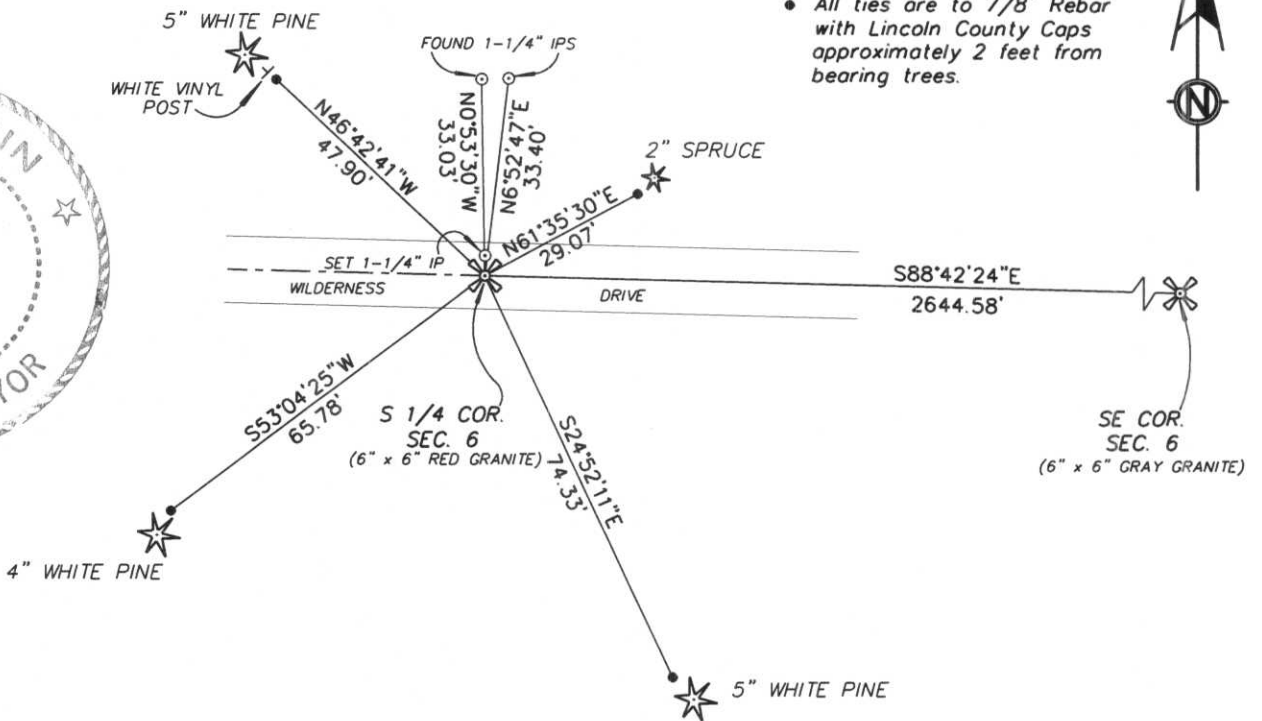
Description of corner evidence found:

We dug with a backhoe along the centerline of Wilderness Drive and located a 6"x6" Red Granite stone. We accepted this position and set a 1-1/4" Iron Pipe on the North side of the Granite and tied to 7/8" Iron Rebar with Lincoln County Caps.

(c) (d) (e) Plan view of corner with ties to at least 4 witness monuments. If in disagreement with previously established corner, show the distances between the two corners and also indicate the ties to the disputed corner.

NOTE: Drawing is not to scale.

- All ties are to 7/8" Rebar with Lincoln County Caps approximately 2 feet from bearing trees.



(I) I, William W. Nutter RLS, S-2299
 (type or print name) certify that the corner location on this record was determined by me or under my direction and control and that this U.S. Public Land Survey Monument Record is correct and complete to the best of my knowledge and belief.

William W. Nutter
 Signature

4-14-2004
 Date

Index No.

E-3









