

# Attachment to Tie Sheet C-21, T32N, R6E

43206022000

I visited the corner on 4/25/2019 to verify the corner and reference tie monumentation before County Road work. I found a surface P.K. Nail and all 4 ties from the David Lemke tie sheet (5/30/1997). The established Coordinates and all 4 ties agree with existing monument.

*Anthony R. Dallman* 8/20/19

Anthony R. Dallman, PLS-2405

Lincoln County Surveyor



# U.S. PUBLIC LAND SURVEY MONUMENT RECORD

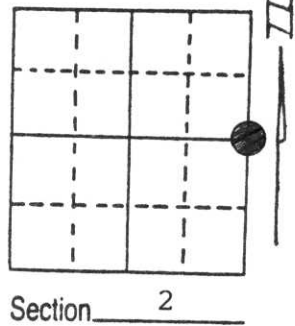
Note: This form is intended and designed to fulfill all requirements of Wisconsin Administrative Code, Chapter A-E 5.02, U.S. Public Land Survey Monument Record (3) (a) (b) (c) (d) (e) (f) (g) (h) (i). An additional sheet may be added if necessary to conform with said requirements.

(a) Corner location: Township 32 North

Range 6 East

Town/City/Village TN. OF MERRILL

County LINCOLN



(b) (f) (g) (h) Description of monument found at this corner and if it was accepted, state all evidence (material, testimonial, occupational, plats, records, other monuments) used as a basis for accepting. If not accepted or if nothing was found, state evidence used as basis for establishing location. If reestablished through lost corner proportionate methods, indicate all monuments, distances and directions used to establish.

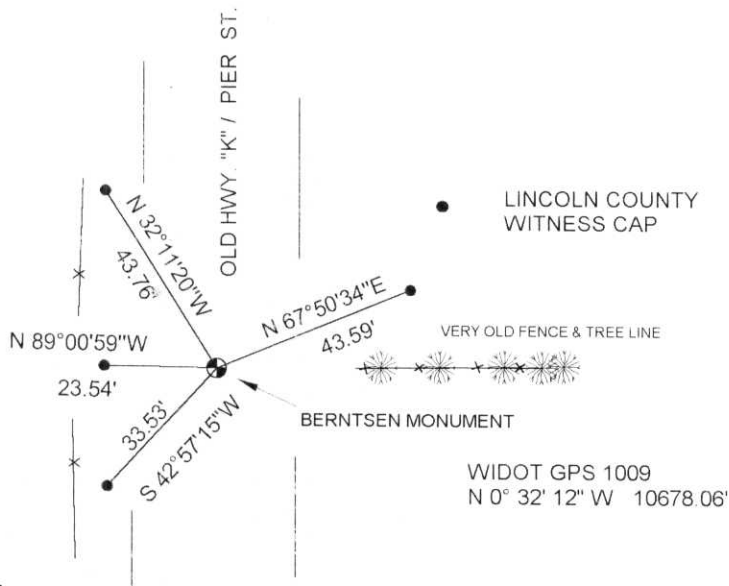
CORNER HISTORY ON FILE IN COUNTY SURVEYORS OFFICE

APRIL 1997 FOUND AN 8" BRIDGE SPIKE IN CENTER OF PIER ST. ON LINE WITH AN OLD FENCE & TREE LINE RUNNING TO THE EAST. EXCAVATED THE AREA WELL BELOW THE ROAD BED AND FOUND NO FURTHER EVIDENCE OF THE CORNER LOCATION.

SET BERNTSEN MONUMENT AT SPIKE LOCATION.

(c) (d) (e) Plan view of corner with ties to at least 4 witness monuments. If in disagreement with previously established corner, show the distances between the two corners and also indicate the ties to the disputed corner.

RECEIVED AT LINCOLN COUNTY  
COURTHOUSE THIS 2nd DAY  
OF June 19 97  
Pat Priebe  
TAX DESCRIPTION OFFICE



(i) I, DAVID L. LEMKE S-1845  
(type or print name) certify that the corner location on this record was determined by me or under my direction and control and that this U.S. Public Land Survey Monument Record is correct and complete to the best of my knowledge and belief.

MAY 30 1997

Signature David L. Lemke

Date



Index No. C-21



2002 10 16

2002 10 16





2002 10 16