

CERTIFIED LAND CORNER RESTORATION

Index No. A-19

State of Wisconsin }  
 County of Lincoln } ss.

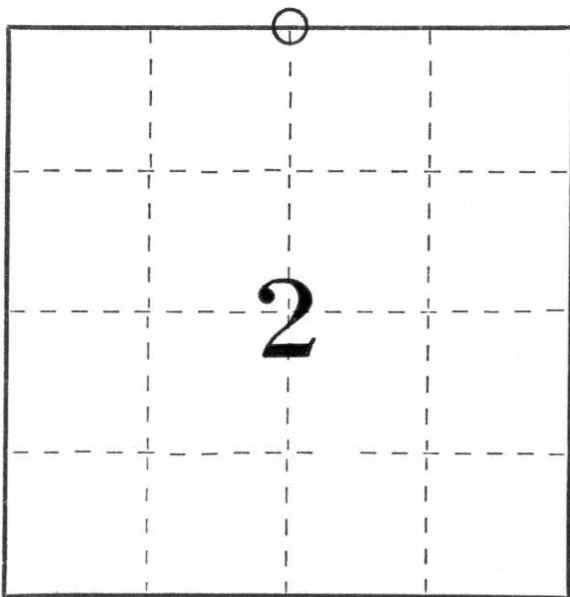
I Sheridan D. Schwark, do hereby certify that on the 3rd day of July, 1979, I found evidence of the North one-quarter corner of Section 2 Township 31, North, Range 5 East, Fourth, Principal Meridian, as described hereon; and that from this evidence I established a new monument and accessories as described hereon to perpetuate the original location of this corner.

Resident witnesses:

.....

.....

.....



○ = Corner monument restored.

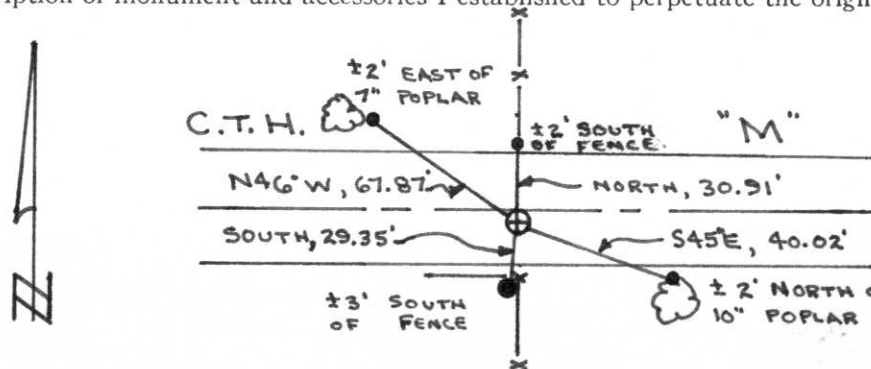
History of original corner establishment:

Date: June & July, 1851  
 Surveyor: James Marsh  
 Monument: Wood Post  
 Witnesses: 8" Birch N34E 24 links  
 12" Hemlock S58E 31 links  
 12" Maple S15W 26 links  
 10" Hemlock N48W 18 links

Description of corner evidence found:

County Trunk Highway "M" had been previously excavated by Francis Fox, Registered Land Surveyor, and no evidence was found. There was a North-South fence on both the north and south sides of "M". We intersected the line made by those fences with the line from the northeast corner of the section to the northwest corner and set the corner at that point. The centerline of "M" was not straight enough to use it in establishing the corner.

Description of monument and accessories I established to perpetuate the original location of this corner.



- ⊕ = LINCOLN COUNTY BERNTSEN MONUMENT SET 3.6' SOUTH OF C.T.H. "M" CENTERLINE
- = 1/4" SOLID IRON ROD FOUND IN PLACE
- = 3/4" x 30" SOLID IRON ROD SET

Dated at Wausau, Wis., this 30th day of July, 19 79.

Signature Sheridan D. Schwark Title Registered Land Surveyor Registration No. S-1205  
 (County Surveyor, Registered Land Surveyor, or other duly authorized official)

Office of Register of Deeds, County of \_\_\_\_\_, I hereby certify that the within instrument was filed in this office for record on the \_\_\_\_\_ day of \_\_\_\_\_, 19 \_\_\_\_\_ at \_\_\_\_\_ o'clock \_\_\_\_\_ M.

(Register of Deeds)

By \_\_\_\_\_ Deputy

CERTIFIED LAND CORNER RESTORATION

Index No. A-19

State of Wisconsin }  
County of LINCOLN } ss.

I FRANCIS X FOX, do hereby certify that on the 11TH day of JUNE, 1974, I found evidence of the NORTH 1/4 corner of SECTION 2 Township 31, North, Range 5 EAST, Fourth, Principal Meridian, as described hereon; and that from this evidence I established a new monument and accessories as described hereon to perpetuate the original location of this corner.

Resident witnesses:

.....  
.....  
.....

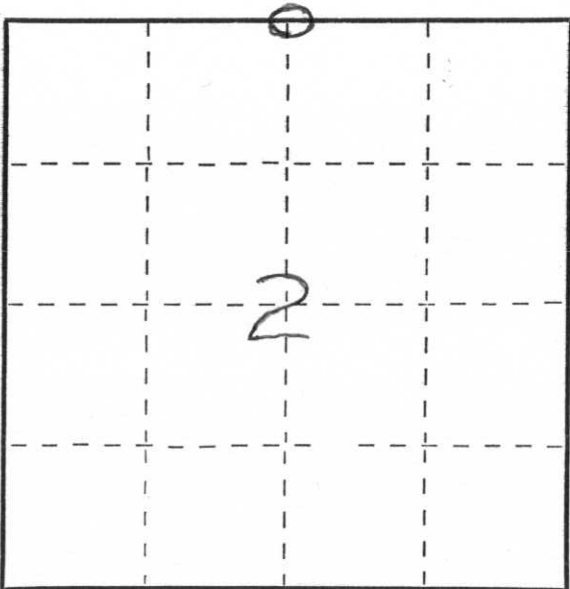
History of original corner establishment:

DUG FOR STONE CORNER OVER A WIDE AREA DOWN TO SWAMP LEVEL. FOUND NOTHING TO INDICATE A CORNER

Description of corner evidence found:

Description of monument and accessories I established to perpetuate the original location of this corner.

DID NOT ATTEMPT TO RESTORE.



○ = Corner monument NOT FOUND restored.

Dated at MERRILL, Wis., this 11TH day of JUNE, 1974.

Signature Francis X. Fox Title \_\_\_\_\_ Registration No. 46  
(County Surveyor, Registered Land Surveyor, or other duly authorized official)

Office of Register of Deeds, County of \_\_\_\_\_, I hereby certify that the within instrument was filed in this office for record on the \_\_\_\_\_ day of \_\_\_\_\_, 19\_\_\_\_ at \_\_\_\_\_ o'clock \_\_\_\_\_ M.

.....  
(Register of Deeds)

By \_\_\_\_\_ Deputy