

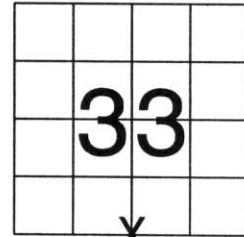
RECEIVED AT LINCOLN COUNTY  
 COURTHOUSE THIS 18th DAY  
 OF August 2003  
 LAND INFORMATION OFFICE

RECEIVED AT LINCOLN COUNTY  
 COURTHOUSE THIS 18th DAY  
 OF August 2003  
*Tom Dahl*  
 LAND INFORMATION OFFICE

# U.S. PUBLIC LAND SURVEY MONUMENT RECORD

NOTE: THIS FORM IS INTENDED AND DESIGNED TO FULFILL ALL REQUIREMENTS OF WISCONSIN ADMINISTRATIVE CODE, CHAPTER A-E 7.08 U.S. PUBLIC LAND SURVEY MONUMENT RECORD (3) (a) (b) (c) (d) (e) (f) (g) (h) (i). AN ADDITIONAL SHEET MAY BE ADDED IF NECESSARY TO CONFORM WITH SAID REQUIREMENTS.

(a) CORNER LOCATION: TOWNSHIP 32 NORTH  
 RANGE 5 EAST/~~WEST~~  
 TOWN/CITY/VILLAGE HARDING  
 COUNTY LINCOLN

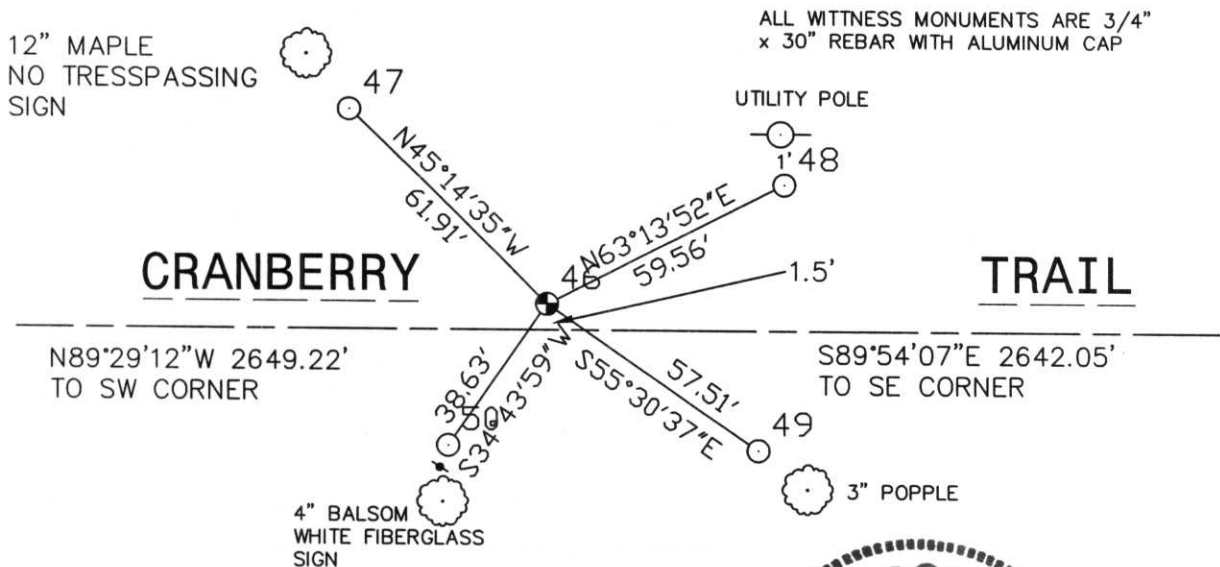


SECTION 33

(b) (f) (g) (h) DESCRIPTION OF MONUMENT FOUND AT THIS CORNER AND IF IT WAS ACCEPTED. STATE ALL EVIDENCE (MATERIAL, TESTIMONIAL, OCCUPATIONAL, PLATS, RECORDS, OTHER MONUMENTS) USED AS BASIS FOR ACCEPTING. IF NOT ACCEPTED OR IF NOTHING WAS FOUND, STATE EVIDENCE USED AS BASIS FOR ESTABLISHING LOCATION. IF REESTABLISHED THROUGH LOST CORNER PROPORTIONATE METHODS, INDICATE ALL MONUMENTS, DISTANCES AND DIRECTIONS USED TO ESTABLISH. INDICATE TYPE OF MONUMENT FOUND OR SET AND SIGN POST.

USING BACK HOE PROVIDED BY COPPER RIVER DEVELOPMENT COMPANY, ALAN KOEHLER, OPERATOR, WE DUG AND FOUND A 6" x 6" GRANITE MONUMENT, BROKE INTO 3 PIECES. NONE OF THE PIECES HAD AN X ON TOP. PIECES WERE 3 FEET BELOW SURFACE. HELD WHAT I TOOK TO BE THE BOTTOM PIECE OF GRANITE, FOR CORNER, SET BERNTSEN MONUMENT IN ITS PLACE. LEFT GRANITE PIECES IN HOLE. TIED OUT. BERNTSEN IS 8" BELOW ROAD SURFACE.

(c) (d) (e) PLAN VIEW OF CORNER WITH TIES TO AT LEAST 4 WITNESS MONUMENTS. IF IN DISAGREEMENT WITH PREVIOUSLY ESTABLISHED CORNER, SHOW THE DISTANCES BETWEEN THE TWO CORNERS AND ALSO INDICATE THE TIES TO THE DISPUTED CORNER.



(i) I, DAVID L. OSTERBRINK RLS NO. S-2014  
 (TYPE OR PRINT NAME) CERTIFY THAT THE CORNER LOCATION ON THIS RECORD WAS DETERMINED BY ME OR UNDER MY DIRECTION AND CONTROL AND THAT THIS U.S. PUBLIC LAND SURVEY MONUMENT RECORD IS CORRECT AND COMPLETE TO THE BEST OF MY KNOWLEDGE AND BELIEF.

*David L. Osterbrink*  
 SIGNATURE DATE 8-16-03



INDEX NO.

1-11











