

# U.S. PUBLIC LAND SURVEY MONUMENT RECORD

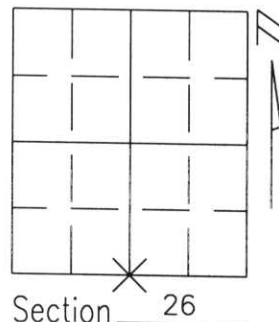
Note: This form is intended and designed to fulfill all requirements of Wisconsin Administrative Code, Chapter A-E 5.02, U.S. Public Land Survey Monument Record (3)(a)(b)(c)(d)(e)(f)(g)(h)(i). An additional sheet may be added if necessary to conform with said requirements.

(a) Corner location: Township 32 North

Range 5 East

Town/City/Village HARDING

County LINCOLN



(b)(f)(g)(h) Description of monument found at this corner and if it was accepted, state all evidence (material, testimonial, occupational, plats, records, other monuments) used as a basis for accepting. If not accepted or if nothing was found, state evidence used as basis for establishing location. If reestablished through lost corner proportionate methods, indicate all monuments, distances and directions used to establish.

I FOUND A BRASS CAPPED MONUMENT IN PLACE AS INDICATED BY A U.S. PUBLIC LAND SURVEY MONUMENT RECORD PREPARED BY WILLIAM W. NUTTER IN 1997 AND LINCOLN COUNTY COURTHOUSE. THE MEASURED DISTANCES FROM THE REMAINING TIES ON THIS MONUMENT RECORD DID NOT CHECK WITH THE RECORD DISTANCES, SO I RETIED THE CORNER.

**RECEIVED AT LINCOLN COUNTY COURTHOUSE THIS 22nd DAY OF June 19 99**  
*Pat Priebe*  
**LAND INFORMATION OFFICE**

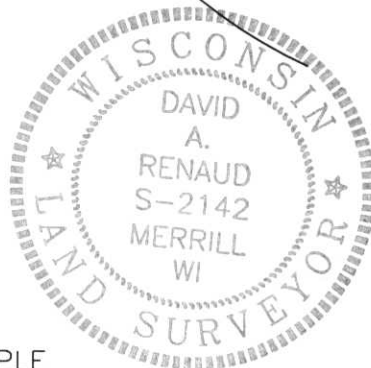
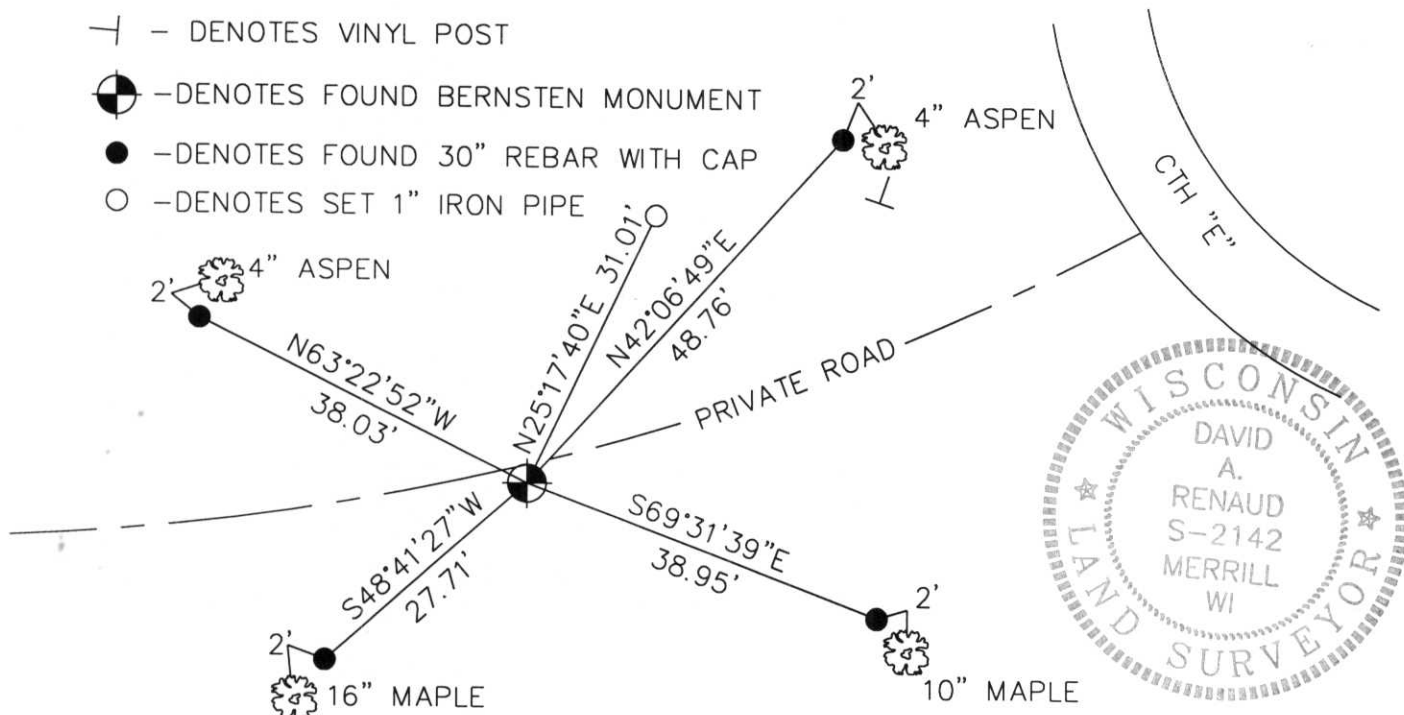
(c)(d)(e) Plan view of corner with ties to at least 4 witness monuments. If in disagreement with previously established corner, show the distances between the two corners and also indicate the ties to the disputed corner.

┆ - DENOTES VINYL POST

⊙ - DENOTES FOUND BERNSTEIN MONUMENT

● - DENOTES FOUND 30" REBAR WITH CAP

○ - DENOTES SET 1" IRON PIPE



(i) I, DAVID A. RENAUD, WI R.L.S. S-2142  
certify that the corner location on this record was determined by me or under my direction and control and that this U.S. Public Land Survey Monument Record is correct and complete to the best of my knowledge and belief.

*David A. Renaud* 6-2-99  
Signature Date

Index No. U-19