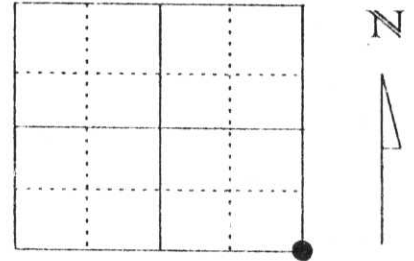


U.S. PUBLIC LAND SURVEY MONUMENT RECORD

Note: This form is intended and designed to fulfill all requirements of Wisconsin Administrative Code, Chapter A-E 5.02, U.S. Public Land Survey Monument Record (3) (a) (b) (c) (d) (e) (f) (g) (h) (l). An additional sheet may be added if necessary to conform with said requirements.

(a) Corner location: Township 32 North
 Range 5 East
 Town/City/Village HARDING
 County Lincoln



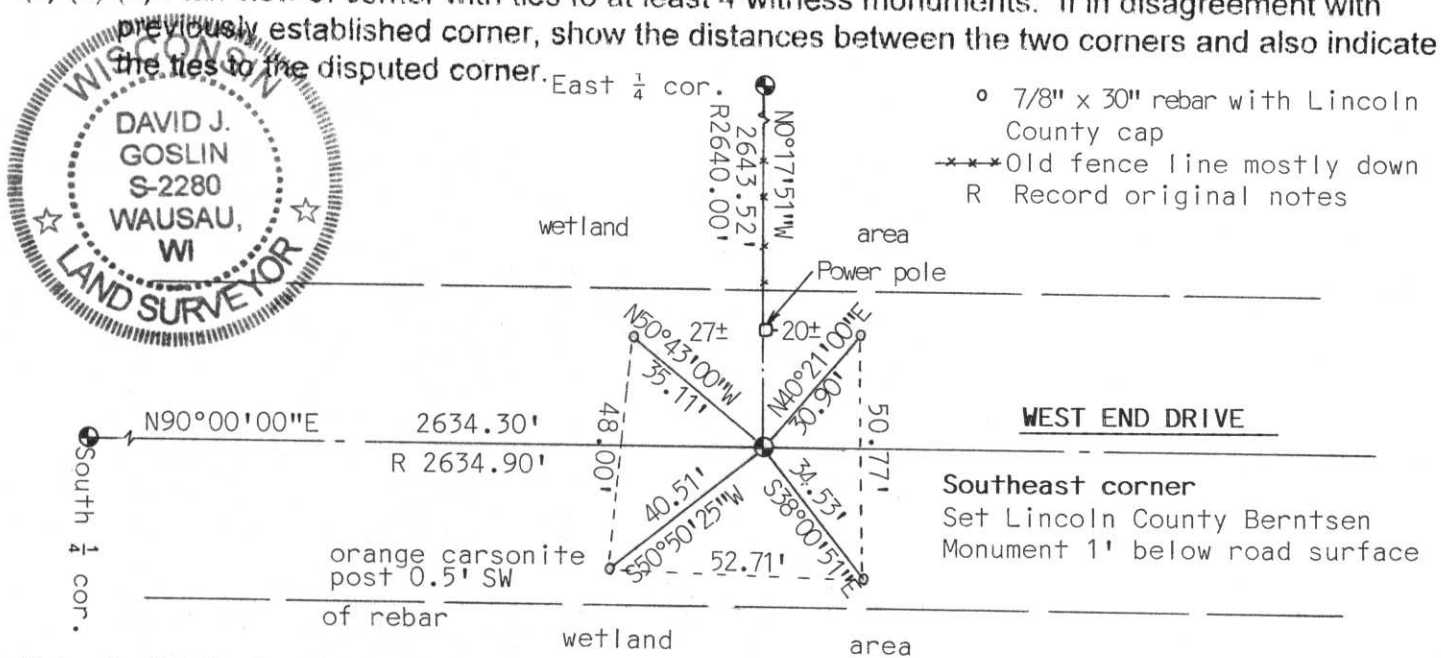
Section 21

(b) (f) (g) (h) Description of monument found at this corner and if it was accepted, state all evidence (material, testimonial, occupational, plats, records, other monuments) used as a basis for accepting. If not accepted or if nothing was found, state evidence used as basis for establishing location. If reestablished through lost corner proportionate methods, indicate all monuments, distances and directions used to establish.

Original corner wood post set by R. Chaney, Deputy Surveyor, in November of 1852.
 Ties set out are as follows:
 Birch 9", S39°E, 6 links
 Birch 11", N31°W, 42 links

We excavated at the intersection of an old down fence line to the North and the Centerline of West End Drive. We dug 5' down and an 8' square area and found no evidence of the Section corner. We then set a Lincoln County Berntsen Monument at the intersection of the Centerline of West End Drive and the fence to the North. Accepted this location as best evidence of corner location.

(c) (d) (e) Plan view of corner with ties to at least 4 witness monuments. If in disagreement with previously established corner, show the distances between the two corners and also indicate the ties to the disputed corner.



(l) I, David J. Goslin RLS No. 2280
 (type or print name) certify that the corner location on this record was determined by me or under my direction and control and that this U.S. Public Land Survey Monument Record is correct and complete to the best of my knowledge and belief.
David J. Goslin 12-6-99
 Signature Date

**RECEIVED AT LINCOLN COUNTY
 COURTHOUSE THIS 6th DAY
 OF Dec. 19 99
Pat Priebe
 LAND INFORMATION OFFICE**

Index No. 9-13

(revised 12/97)









