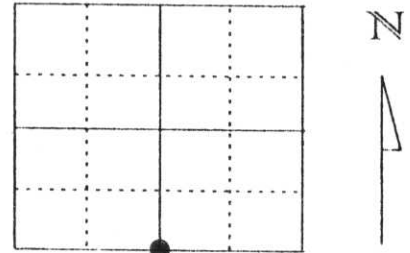


U.S. PUBLIC LAND SURVEY MONUMENT RECORD

Note: This form is intended and designed to fulfill all requirements of Wisconsin Administrative Code, Chapter A-E 5.02, U.S. Public Land Survey Monument Record (3) (a) (b) (c) (d) (e) (f) (g) (h) (l). An additional sheet may be added if necessary to conform with said requirements.

(a) Corner location: Township 32 North
 Range 5 East
 Town/City/Village HARDING
 County Lincoln



Section 21

(b) (f) (g) (h) Description of monument found at this corner and if it was accepted, state all evidence (material, testimonial, occupational, plats, records, other monuments) used as a basis for accepting. If not accepted or if nothing was found, state evidence used as basis for establishing location. If reestablished through lost corner proportionate methods, indicate all monuments, distances and directions used to establish.

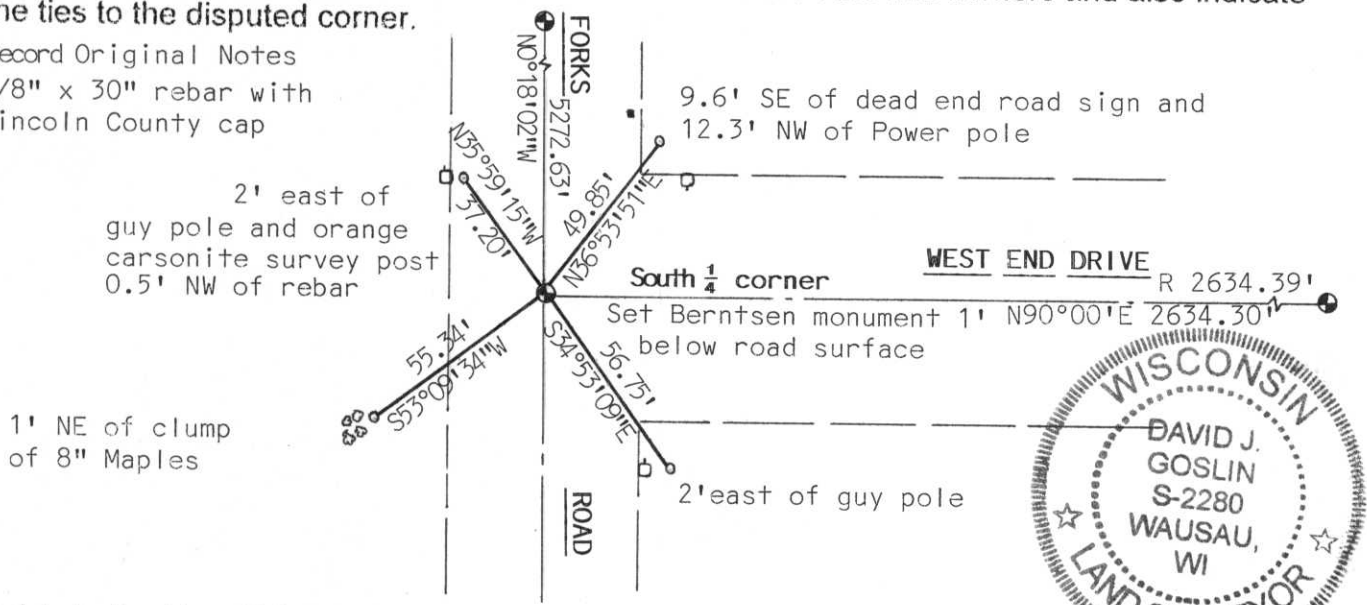
Original corner wood post set by R. Chaney, Deputy Surveyor, in November of 1852.

Ties set out are as follows:
 Hemlock 12", N52°E, 26 links
 Birch 7", S54°W, 38 links

We excavated at the intersection of Forks Road and West End Drive. We found no evidence of a corner so we held the intersection of the roads as the corner location and set a Lincoln County Berntsen Monument 1' below the surface of the road. The distance from this corner to the Southeast corner checked the original survey notes distances of 2634.39 feet compared to what we measured 2634.30 feet. Accepted this location as the best evidence of the corner location.

(c) (d) (e) Plan view of corner with ties to at least 4 witness monuments. If in disagreement with previously established corner, show the distances between the two corners and also indicate the ties to the disputed corner.

R Record Original Notes
 • 7/8" x 30" rebar with Lincoln County cap



(l) I, David J. Goslin RLS No. 2280

(type or print name) certify that the corner location on this record was determined by me or under my direction and control and that this U.S. Public Land Survey Monument Record is correct and complete to the best of my knowledge and belief.

David J. Goslin 12-6-99
 Signature Date

RECEIVED AT LINCOLN COUNTY
 COURTHOUSE THIS 6th DAY
 OF Dec. 19 99
Pat Pribe
 LAND INFORMATION OFFICE

Index No. 9-11





DEAD
END





