

# Attachment to Tie Sheet O-17, T32N, R5E

## 43205222000

I visited the corner on 8/01/2018, before scheduled road work, to verify the corner and reference tie monumentation. I found the Berntsen SMN-1 Nail, and 3 of 4 ties from William Nutter's tie sheet (11/08/2000). The established Coordinates and all 3 of the ties agree with existing monument.

I returned on 7/25/2019 to place a new SMN-1 at corner location. I was able to find William Nutter's 4<sup>th</sup>, SW, tie on this date.

Southwesterly witness measures 46.85', shown as 16.83' on Tie Sheet.

*Anthony R Dallman* 8/14/19

Anthony R. Dallman, PLS-2405

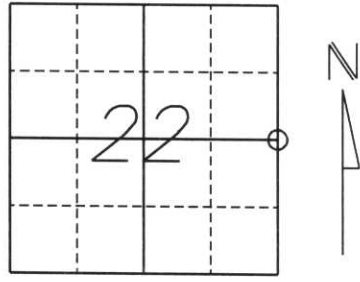
Lincoln County Surveyor



# U.S. PUBLIC LAND SURVEY MONUMENT RECORD

Note: This form is intended and designed to fulfill all requirements of Wisconsin Administrative Code, Chapter A-E 5.02, U.S. Public Land Survey Monument Record (3) (a) (b) (c) (d) (e) (f) (g) (h) (l). An additional sheet may be added if necessary to conform with said requirements.

(a) Corner location: Township 32 North  
 Range 5 East  
 Town/City/Village HARDING  
 County Lincoln



Section 22

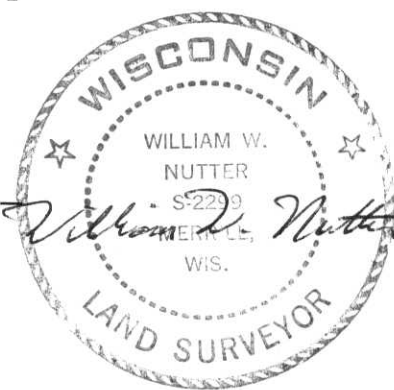
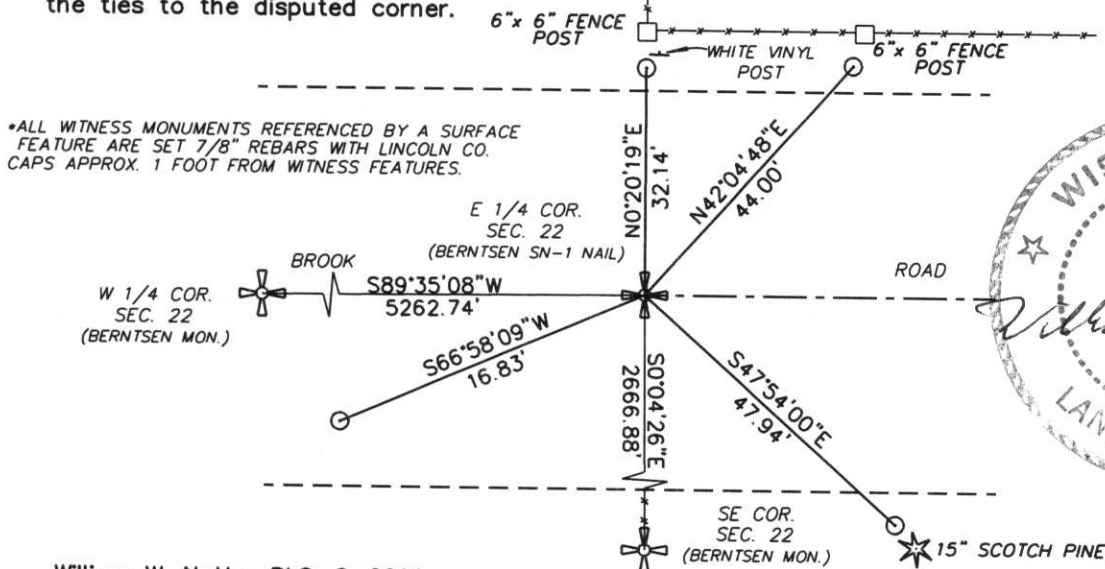
(b) (f) (g) (h) Description of monument found at this corner and if it was accepted, state all evidence (material, testimonial, occupational, plats, records, other monuments) used as a basis for accepting. If not accepted or if nothing was found, state evidence used as a basis for establishing location. If reestablished through lost corner proportionate methods, indicate all monuments, distances and directions used to establish.

ORIGINAL SURVEY UNKNOWN.

SET BERNTSEN SN-1 NAIL AT INTERSECTION OF FENCELINE TO THE NORTH-SOUTH AND THE CENTERLINE OF BROOK ROAD.  
 SET (4) 7/8" REBARS WITH LINCOLN CO. CAPS AS WITNESS MONUMENTS TO CORNER.

RECEIVED AT LINCOLN COUNTY  
 COURTHOUSE THIS 14th DAY  
 OF Nov 2000  
Tony Dallman  
 LAND INFORMATION OFFICE

(c) (d) (e) Plan view of corner with ties to at least 4 witness monuments. If in disagreement with previously established corner, show the distances between the two corners and also indicate the ties to the disputed corner.



(l) I, William W. Nutter RLS, S-2299  
 (type or print name) certify that the corner location on this record was determined by me or under my direction and control and that this U.S. Public Land Survey Monument Record is correct and complete to the best of my knowledge and belief.

William W. Nutter      11-8-2000  
 Signature      Date

Index No. 0-17









