

U.S. PUBLIC LAND SURVEY MONUMENT RECORD

Instructions: This record shall show the location of the corner and shall include all of the following nine elements (a through i).

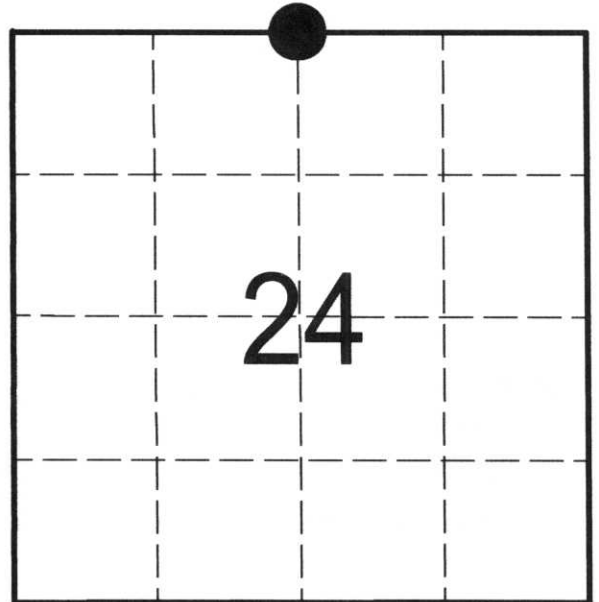
(a) identify the corner by reference to the U.S. public land survey system.

● = Corner monument restored.

 NORTH 1/4 CORNER Corner
 Sec. 24, T 32 N, R 5E

Type of Monument:

STANDARD LINCOLN COUNTY MONUMENT



LINCOLN COUNTY

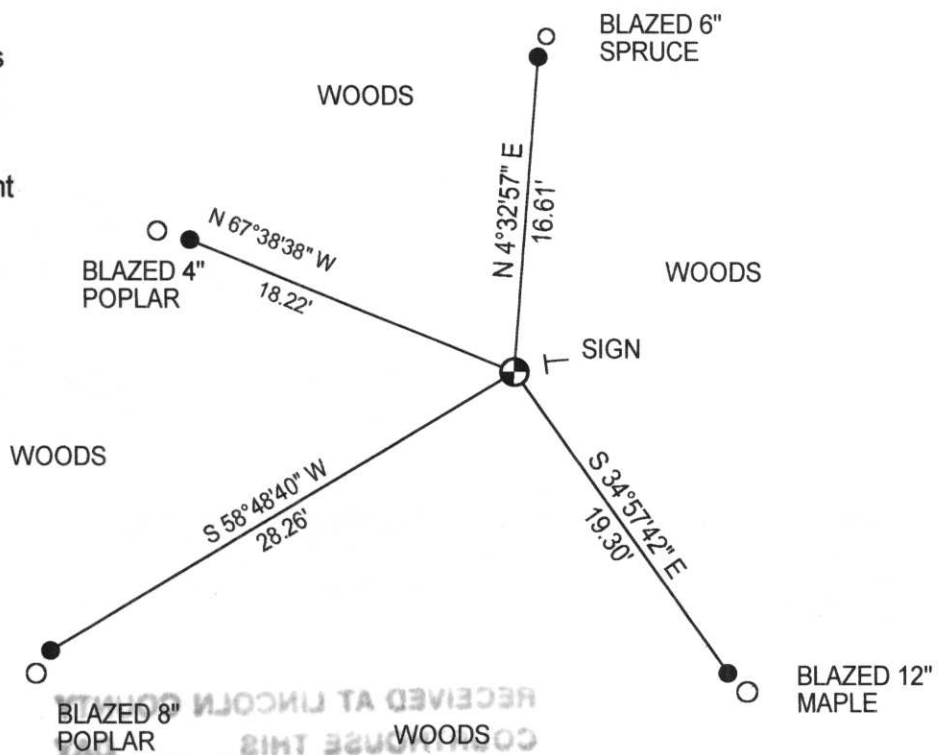
(b) Describe any record evidence, monument evidence, occupational evidence, testimonial evidence or any other material evidence you considered, and whether the monument was found or placed.

FOUND NO EVIDENCE OF A SECTION CORNER AT THIS LOCATION. A 1/2" ELECTRICAL CONDUIT WITH SURVEY RIBBON WAS RECOVERED ON THE NORTH LINE OF THIS SECTION BUT WAS 132.20' WEST OF THIS LOCATION.

(c) In the plan view drawing below, provide reference ties to at least 4 witness monuments, or, if the location is within a municipality, to at least 2 witness monuments. (Witness monuments shall be made of concrete, natural stone, iron or other equally durable material.)

Describe witness monuments: 7/8" X 30" IRON ROD

(d) Show a plan view drawing depicting the relevant monuments and reference ties which is sufficient in detail to enable accurate relocation of the corner monument if the corner monument is disturbed. Indicate North



● 7/8" X 30" IRON ROD
 ⊕ LINCOLN COUNTY SECTION CORNER

County File No. _____

M-23


CAUTION: MONUMENT SET IN WRONG LOCATION.

The North 1/4 Corner of Section 24, Township 32 North, Range 5 East, Town of Harding is set in the wrong place. The existing monument, and ties are incorrect. Because of frozen ground, I cannot move the monument or witness corners. If this corner is needed, contact:

Northwoods Surveying LLC
623 Jefferson Street
Wausau, Wisconsin 54403
(715) 845-1249

I have a traverse point set near the corner.

Monument and ties will be moved to correct location as shown on Epping section breakdown, in spring of 2004.



David L. Osterbrink RLS No. S-2014
1-19-04

RECEIVED AT LINCOLN COUNTY
COURTHOUSE THIS 19 DAY
OF January 20 04
Tom F. Lawrence
LAND INFORMATION OFFICE

N 1/4 Section 24 T32N, R5E
- Town of Harding -



U.S. PUBLIC LAND SURVEY MONUMENT RECORD

Instructions: This record shall show the location of the corner and shall include all of the following nine elements (a through i).

(a) identify the corner by reference to the U.S. public land survey system.

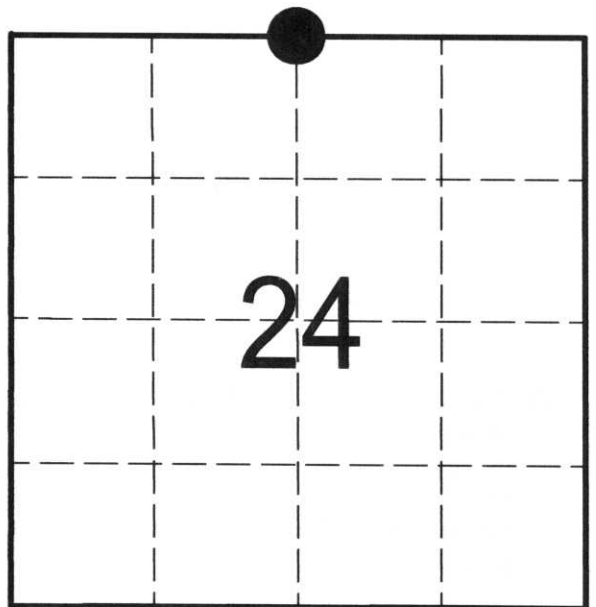
● = Corner monument restored.

NORTH 1/4 CORNER Corner

Sec. 24, T 32 N, R 5E

Type of Monument:

STANDARD LINCOLN COUNTY MONUMENT



LINCOLN COUNTY

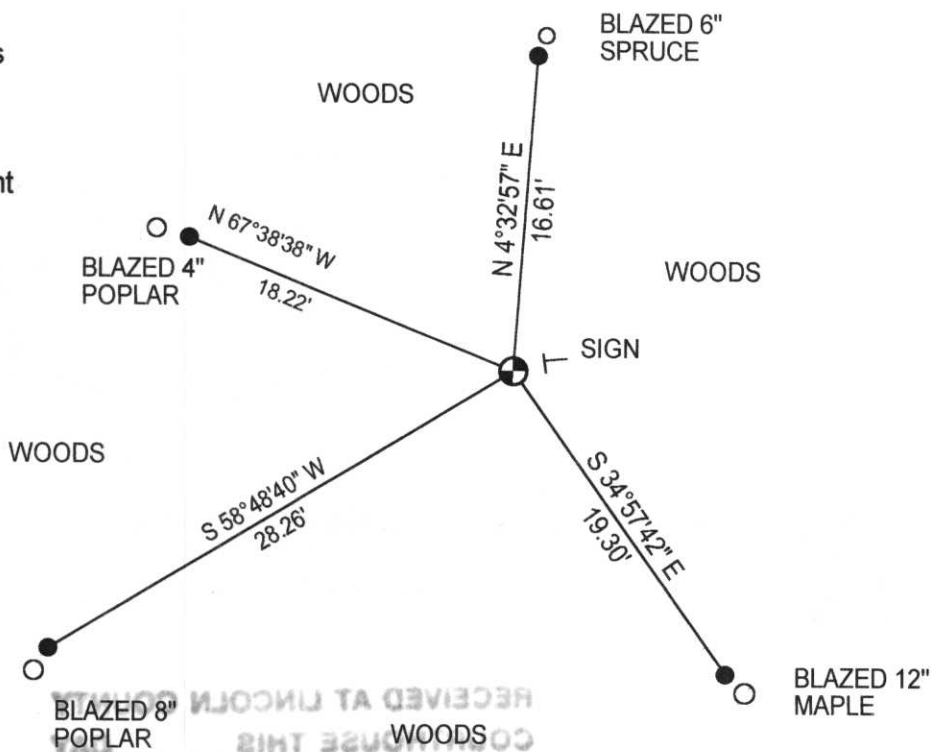
(b) Describe any record evidence, monument evidence, occupational evidence, testimonial evidence or any other material evidence you considered, and whether the monument was found or placed.

FOUND NO EVIDENCE OF A SECTION CORNER AT THIS LOCATION. A 1/2" ELECTRICAL CONDUIT WITH SURVEY RIBBON WAS RECOVERED ON THE NORTH LINE OF THIS SECTION BUT WAS 132.20' WEST OF THIS LOCATION.

(c) In the plan view drawing below, provide reference ties to at least 4 witness monuments, or, if the location is within a municipality, to at least 2 witness monuments. (Witness monuments shall be made of concrete, natural stone, iron or other equally durable material.)

Describe witness monuments: 7/8" X 30" IRON ROD

(d) Show a plan view drawing depicting the relevant monuments and reference ties which is sufficient in detail to enable accurate relocation of the corner monument if the corner monument is disturbed. Indicate North



● 7/8" X 30" IRON ROD
 ● LINCOLN COUNTY SECTION CORNER

County File No. _____

M-23

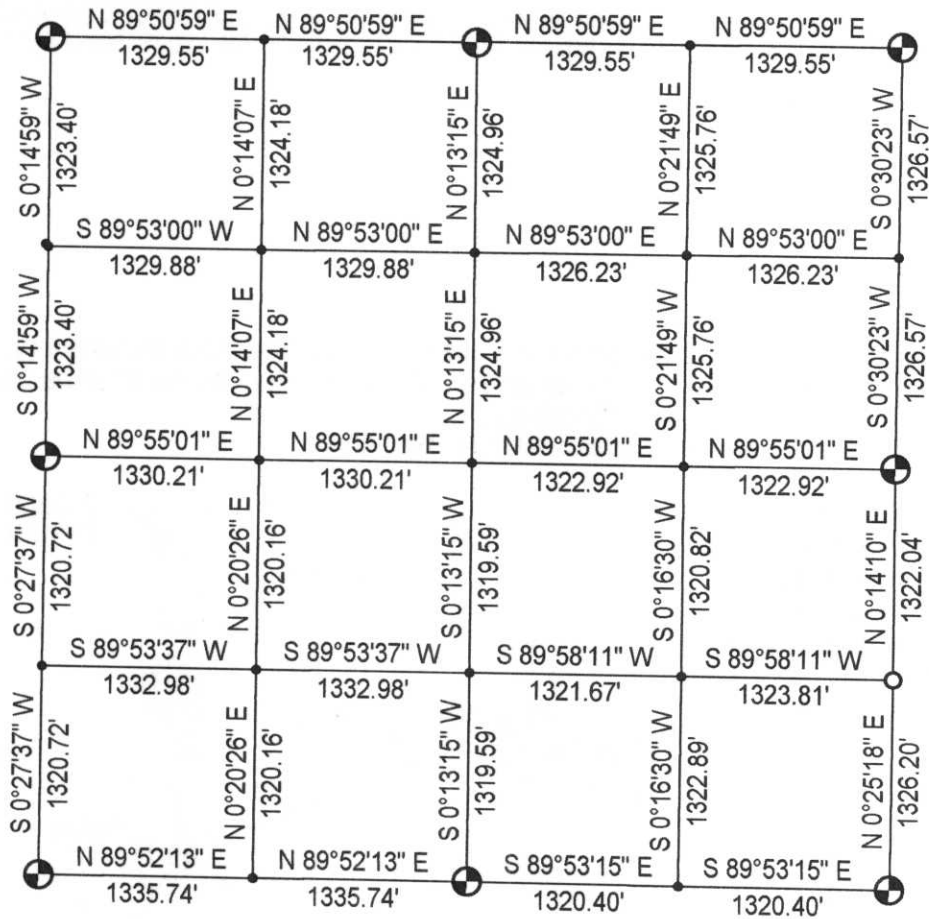
(e) Describe any material discrepancy between the location of the corner as restored or reestablished and the location of that corner as previously restored or reestablished by distance and direction. Show the discrepancy on the plan view drawing under (d), above. Show the distances between the corner as previously restored or reestablished and (1) the corner as restored or reestablished, and (2) to at least 2 the witness monuments shown on the drawing in (d) above.

NONE

(f) Was the corner restored through acceptance of (1) and obliterated evidence location, or, (2) a found perpetuated location?

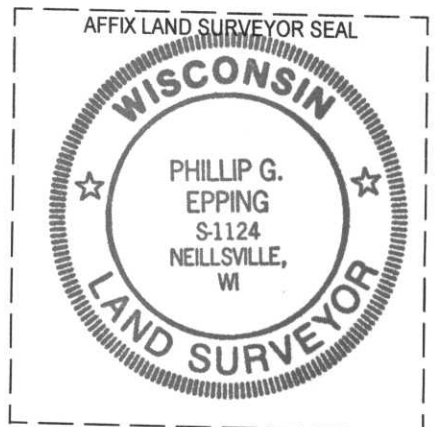
CORNER WAS RESTORED USING THE FOLLOWING EVIDENCE: USE RECORDED ANGLE FROM THE SOUTH 1/4 CORNER AND LINE EXTENDED FROM THE RECOVERED 1/2" PIPE RECOVERED WEST OF THIS LOCATION. USED THE BEARING FROM NORTHWEST CORNER TO 1/2" PIPE EXTENDED EASTERLY TO INTERSECT WITH LINE FROM SOUTH 1/4 CORNER.

(g&h) Was the corner reestablished through lost corner proportionate methods? If so, show the method, including the directions and distances to other public land survey corners used as evidence or used for proportioning in determining the corner location?



(i) I, PHILLIP G. EPPING
 (type or print name) certify that the corner location shown on this record was determined by me or under the direction and control and that this U.S. Public Land Survey Monument Record is correct and complete to the best of my knowledge and belief.

RECEIVED AT LINCOLN COUNTY
 COURTHOUSE THIS 19th DAY
 OF Nov. 19 99
Pat Friebe
 LAND INFORMATION OFFICE



Phillip G. Epping
 Signature

11-17-99
 Date

24 SEC 32 TWN 5E RNG









