

# U.S. PUBLIC LAND SURVEY MONUMENT RECORD

**Instructions:** This record shall show the location of the corner and shall include all of the following nine elements ( a through i ).

(a) identify the corner by reference to the U.S. public land survey system.

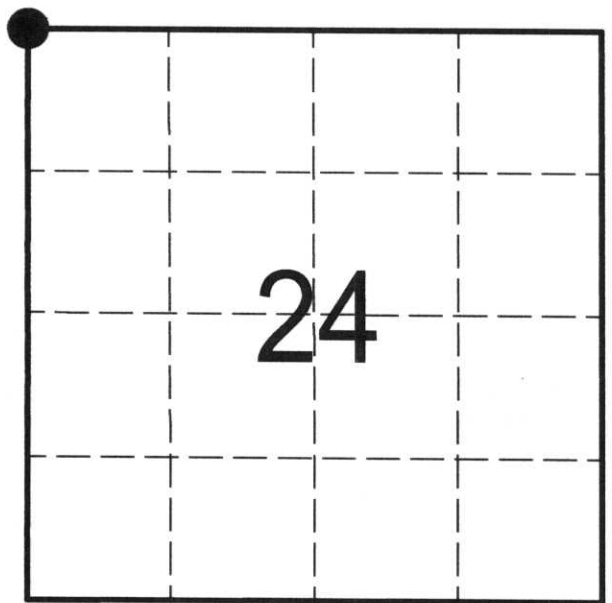
● = Corner monument restored.

NORTH WEST CORNER Corner

Sec. 24, T 32 N, R 5E

Type of Monument:

**STANDARD LINCOLN COUNTY MONUMENT**



**LINCOLN COUNTY**

(b) Describe any record evidence, monument evidence, occupational evidence, testimonial evidence or any other material evidence you considered, and whether the monument was found or placed.

EXCAVATED AT CENTERLINES OF WANGEN AND LEMMER ROADS. FOUND NO EVIDENCE OF A SECTION CORNER.

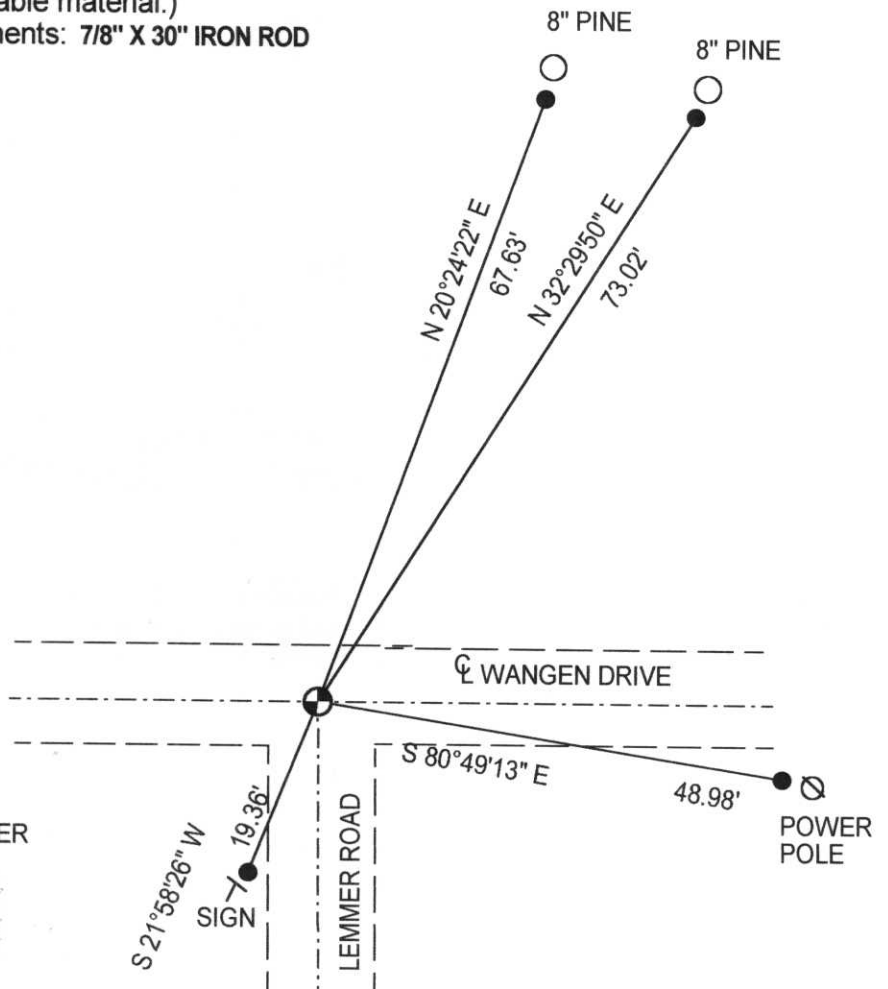
(c) In the plan view drawing below, provide reference ties to at least 4 witness monuments, or, if the location is within a municipality, to at least 2 witness monuments. (Witness monuments shall be made of concrete, natural stone, iron or other equally durable material.)

Describe witness monuments: 7/8" X 30" IRON ROD

(d) Show a plan view drawing depicting the relevant monuments and reference ties which is sufficient in detail to enable accurate relocation of the corner monument if the corner monument is disturbed. Indicate North



- 7/8" X 30" IRON ROD
- ⊙ LINCOLN COUNTY SECTION CORNER



RECEIVED AT LINCOLN COUNTY  
COURTHOUSE THIS 19th DAY  
OF November 19 99  
*Pat Priebe*  
LAND INFORMATION OFFICE

County File No. \_\_\_\_\_

11-21

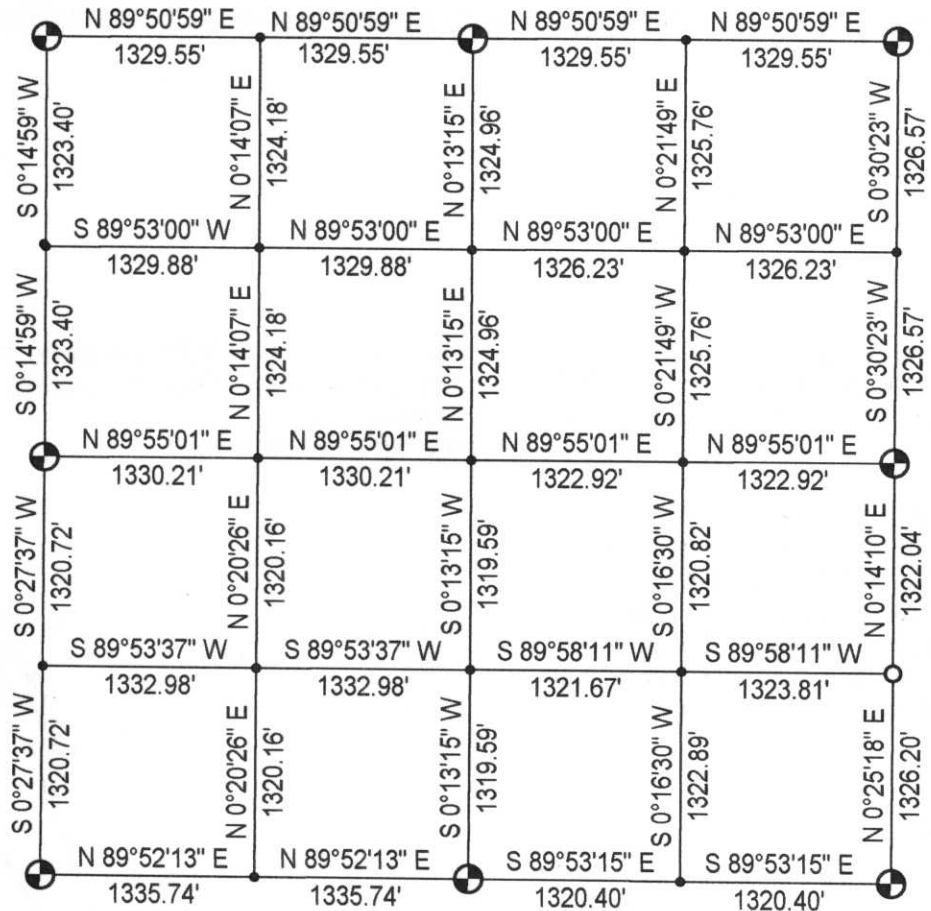
(e) Describe any material discrepancy between the location of the corner as restored or reestablished and the location of that corner as previously restored or reestablished by distance and direction. Show the discrepancy on the plan view drawing under (d), above. Show the distances between the corner as previously restored or reestablished and (1) the corner as restored or reestablished, and (2) to at least 2 the witness monuments shown on the drawing in (d) above.

NONE

(f) Was the corner restored through acceptance of (1) and obliterated evidence location, or, (2) a found perpetuated location?

CORNER WAS SET USING THE PERPETUATED CENTERLINES INTERSECTION OF WANGEN DRIVE AND LEMMER ROAD

(g&h) Was the corner reestablished through lost corner proportionate methods? If so, show the method, including the directions and distances to other public land survey corners used as evidence or used for proportioning in determining the corner location?



(i) I, PHILLIP G. EPPING  
 (type or print name) certify that the corner location shown on this record was determined by me or under the direction and control and that this U.S. Public Land Survey Monument Record is correct and complete to the best of my knowledge and belief.



*Phillip G. Epping*  
 Signature

11-17-99  
 Date

24 32 5E  
 SEC TWN RNG





















VINSON  
LEWIS HWY