

# U.S. PUBLIC LAND SURVEY MONUMENT RECORD

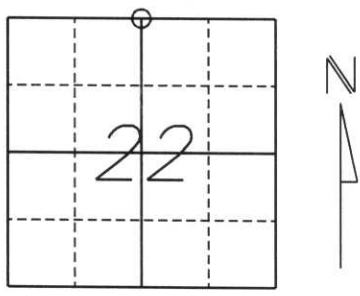
Note: This form is intended and designed to fulfill all requirements of Wisconsin Administrative Code, Chapter A-E 5.02, U.S. Public Land Survey Monument Record (3) (a) (b) (c) (d) (e) (f) (g) (h) (l). An additional sheet may be added if necessary to conform with said requirements.

(a) Corner location: Township 32 North

Range 5 East

Town/City/Village HARDING

County Lincoln



Section 22

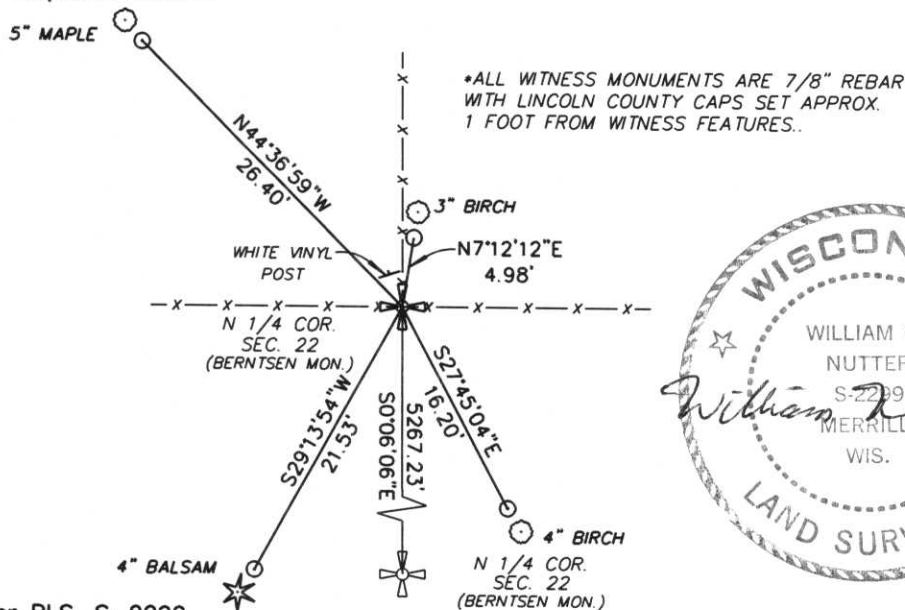
(b) (f) (g) (h) Description of monument found at this corner and if it was accepted, state all evidence (material, testimonial, occupational, plats, records, other monuments) used as a basis for accepting. If not accepted or if nothing was found, state evidence used as a basis for establishing location. If reestablished through lost corner proportionate methods, indicate all monuments, distances and directions used to establish.

ORIGINAL SURVEY UNKNOWN.

FOUND 1/2" IRON PIPE OVER ORIGINAL CEDAR POST AT INTERSECTION WITH FENCELINE TO NORTH AND EAST-WEST. FIDELIS HAHN, OWNER TO THE NORTH, AGREES THAT THIS HAS BEEN THE CORNER SINCE HE'S LIVED THERE. REMOVED THE IRON PIPE AND CEDAR POST AND SET A BERNTSEN MONUMENT WITH (4) 7/8" REBARS WITH LINCOLN COUNTY CAPS AS WITNESS MONUMENTS.

RECEIVED AT LINCOLN COUNTY  
COURTHOUSE THIS 14th DAY  
OF Nov 2000  
Tony Hallman  
LAND INFORMATION OFFICE

(c) (d) (e) Plan view of corner with ties to at least 4 witness monuments. If in disagreement with previously established corner, show the distances between the two corners and also indicate the ties to the disputed corner.



(l) I, William W. Nutter RLS, S-2299  
(type or print name) certify that the corner location on this record was determined by me or under my direction and control and that this U.S. Public Land Survey Monument Record is correct and complete to the best of my knowledge and belief.

William W. Nutter  
Signature

11-8-2000  
Date

Index No. M-15

















