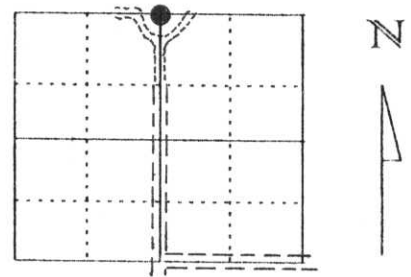


U.S. PUBLIC LAND SURVEY MONUMENT RECORD

Note: This form is intended and designed to fulfill all requirements of Wisconsin Administrative Code, Chapter A-E 5.02, U.S. Public Land Survey Monument Record (3) (a) (b) (c) (d) (e) (f) (g) (h) (i). An additional sheet may be added if necessary to conform with said requirements.

(a) Corner location: Township 32 North
 Range 5 East
 Town/City/Village HARDING
 County Lincoln



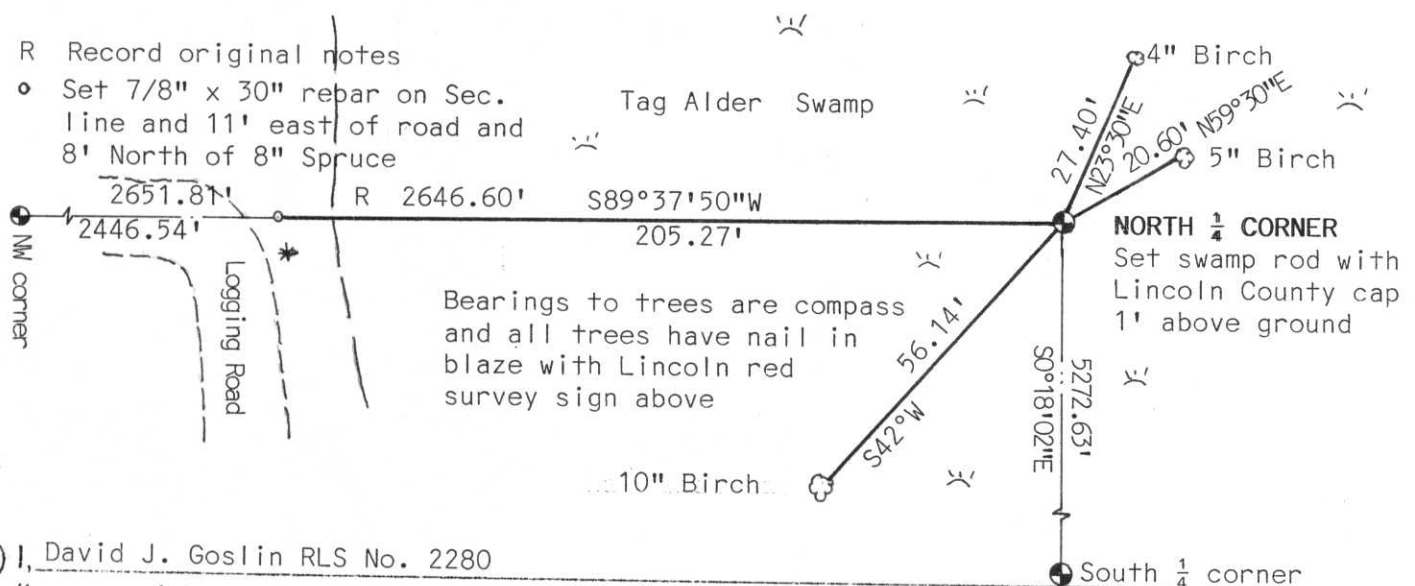
Section 21

(b) (f) (g) (h) Description of monument found at this corner and if it was accepted, state all evidence (material, testimonial, occupational, plats, records, other monuments) used as a basis for accepting. If not accepted or if nothing was found, state evidence used as basis for establishing location. If reestablished through lost corner proportionate methods, indicate all monuments, distances and directions used to establish.

Original corner wood post set by R. Chaney, Deputy Surveyor, in November of 1852. Ties set out are as follows:
 Tamarack 12", N49°30"E, 27 links
 Tamarack 8", S75°W, 22 links

Using the distance from the west edge of the swamp from the original survey notes, we measured in 225± feet east into the swamp. We found an old rusted 3/4" iron pipe at 195± feet into the swamp. While searching next to the pipe we found an intact 3" x 3" squared top and 66" long cedar post with burn marks. Accepted this location as the best evidence of the North 1/4 corner. Set a Swamp Rod with a Lincoln County Cap at the location of the iron pipe. The corner is 1' above the ground with an orange carsonite survey post on east side of monument.

(c) (d) (e) Plan view of corner with ties to at least 4 witness monuments. If in disagreement with previously established corner, show the distances between the two corners and also indicate the ties to the disputed corner.



(i) I, David J. Goslin RLS No. 2280

(type or print name) certify that the corner location on this record was determined by me or under my direction and control and that this U.S. Public Land Survey Monument Record is correct and complete to the best of my knowledge and belief.

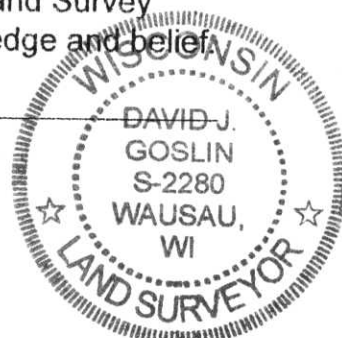
David J. Goslin

12-6-99

Signature

Date

**RECEIVED AT LINCOLN COUNTY
 COURTHOUSE THIS 6th DAY
 OF Dec. 19 99
Pat Priebe
 LAND INFORMATION OFFICE**



Index No. M-11











MARKER
SURVEY