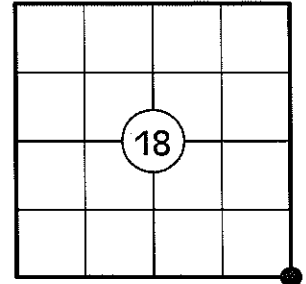


U.S. PUBLIC LAND SURVEY MONUMENT RECORD

NOTE: THIS FORM IS INTENDED AND DESIGNED TO FULFILL ALL REQUIREMENTS OF WISCONSIN ADMINISTRATIVE CODE CHAPTER A-E 7.08 U.S. PUBLIC LAND SURVEY MONUMENT RECORD (3) (a)(b)(c)(d)(e)(f)(g)(h)(i). AN ADDITIONAL SHEET MAY BE ADDED IF NECESSARY TO CONFIRM WITH SAID REQUIREMENTS.

(a) CORNER LOCATION:

SOUTHEAST CORNER OF SECTION 18
 TOWNSHIP 32 NORTH
 RANGE 5 EAST
 TOWN OF HARDING
 COUNTY OF LINCOLN



(b) HISTORY OF ORIGINAL CORNER:

ORIGINAL SURVEYOR: RICHARD O. CHANEY
 DATE OF SURVEY: NOVEMBER, 1852

ORIGINAL BEARING TREES: 14" HEMLOCK - N76°E, 44 LKS
 12" BIRCH - N19°W, 39 LKS

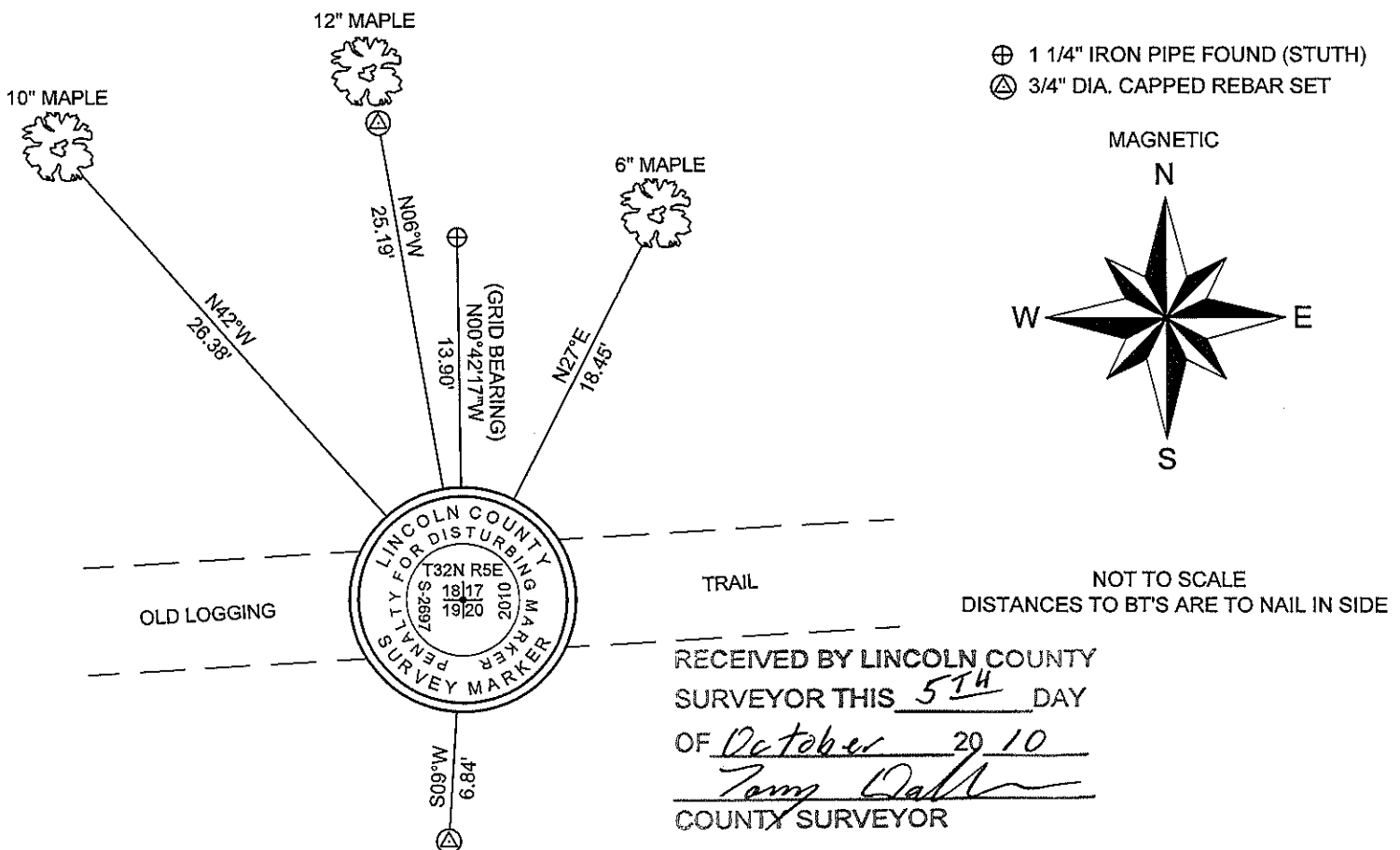
(f)(g)(h) DESCRIPTION OF MONUMENT FOUND AT THIS CORNER AND IF IT WAS ACCEPTED STATE ALL EVIDENCE (MATERIAL, TESTIMONIAL, OCCUPATIONAL, PLATS, RECORDS, OTHER MONUMENTS) USED AS A BASIS FOR ESTABLISHING LOCATION. IF REESTABLISHING THROUGH LOST CORNER PROPORTIONATE METHODS, INDICATE ALL MONUMENTS, DISTANCES, AND DIRECTIONS USED TO ESTABLISH. INDICATE TYPE OF MONUMENT AND SIGN POST FOUND OR SET.

1852: RICHARD O. CHANEY SET THE ORIGINAL SECTION CORNER POST.

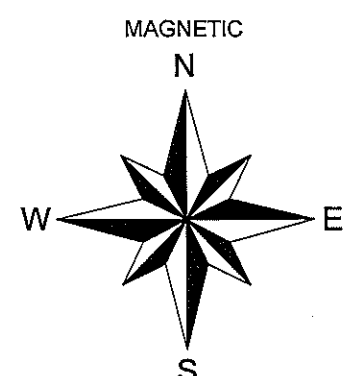
04/20/1983: WILLIAM H. STUTH, RLS, SET AN IRON PIPE AT A PROPORTIONED LOCATION DURING HIS SUBDIVISION OF SECTION 18. HE MADE THREE BEARING TREES: 7" R.M. - N28°W, 13.4'; 7" B.A. - N22°E, 22.3'; 8" B.F. - S02°W, 22.2'.

09/29/2010: I CHOSE NOT TO USE STUTH'S PROPORTIONED POSITION BECAUSE HE DID NOT USE THE 1" DIA. POINTED IRON PIPE SET BY FRANCIS FOX AT THE SOUTHEAST CORNER OF SECTION 6. I SEARCHED THE AREA AND FOUND NO EVIDENCE OF THE ORIGINAL CORNER. I POSITIONED THIS CORNER BY DOUBLE PROPORTION USING THE CORNERS SHOWN ON SHEET 2. I SET A LINCOLN COUNTY ALUMINUM BERNSTEN BREAKAWAY MONUMENT, MADE TWO BEARING TREES AND SET TWO 3/4" DIA. REBAR WITH ALUMINUM CAPS AS REFERENCE MONUMENTS. I SET A WHITE PLASTIC POST 1' NORTH.

(c)(d)(e) PLAN VIEW OF CORNER WITH TIES TO AT LEAST FOUR WITNESSES. IF IN DISAGREEMENT WITH PREVIOUSLY ESTABLISHED CORNER, SHOW THE DISTANCES BETWEEN THE TWO CORNERS AND ALSO INDICATE THE TIE TO THE DISPUTED CORNER.



⊕ 1 1/4" IRON PIPE FOUND (STUTH)
 ⊗ 3/4" DIA. CAPPED REBAR SET



NOT TO SCALE
 DISTANCES TO BT'S ARE TO NAIL IN SIDE

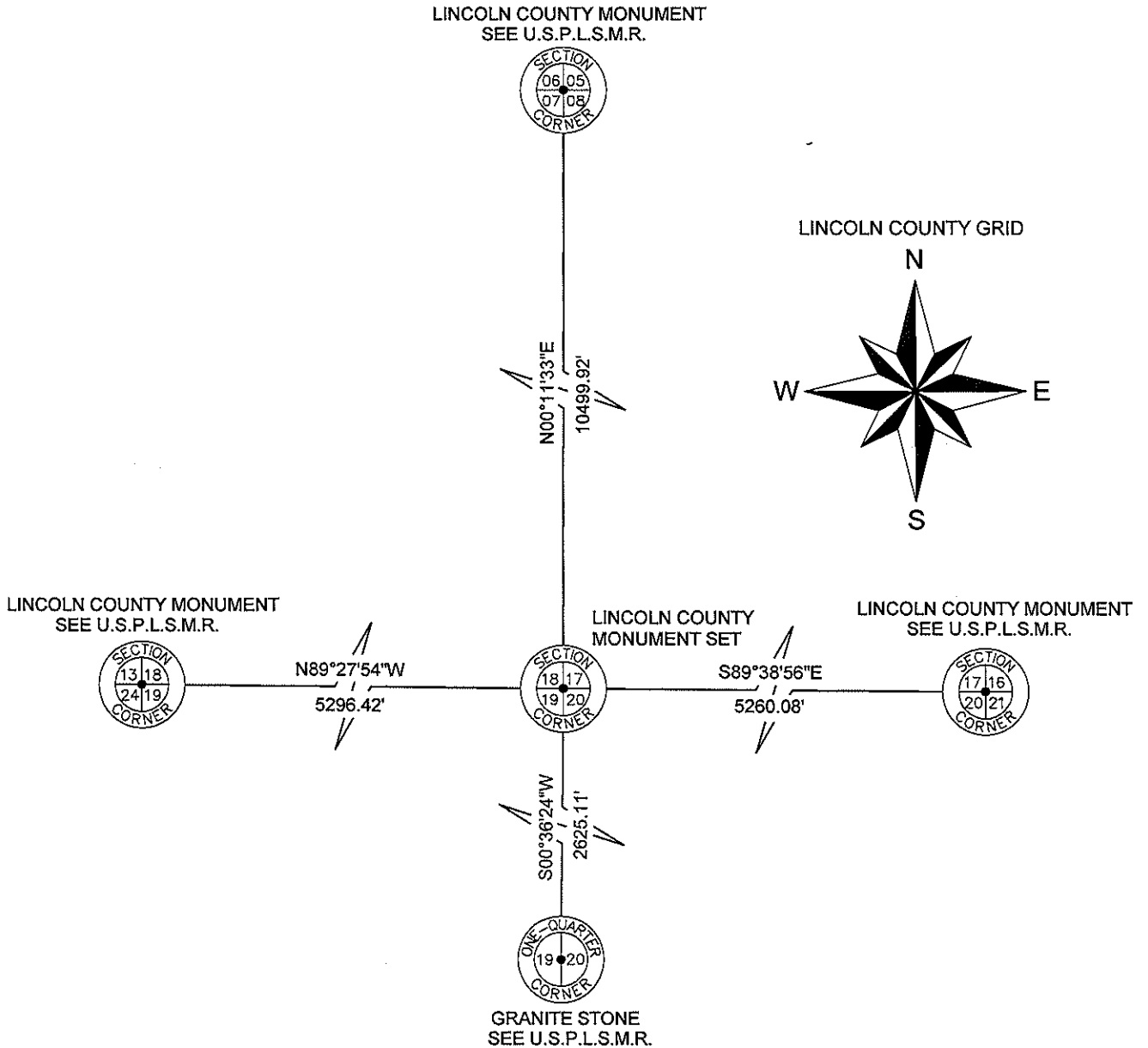
RECEIVED BY LINCOLN COUNTY
 SURVEYOR THIS 5TH DAY
 OF October 20 10
Tom Dahl
 COUNTY SURVEYOR

M-5

U.S. PUBLIC LAND SURVEY MONUMENT RECORD

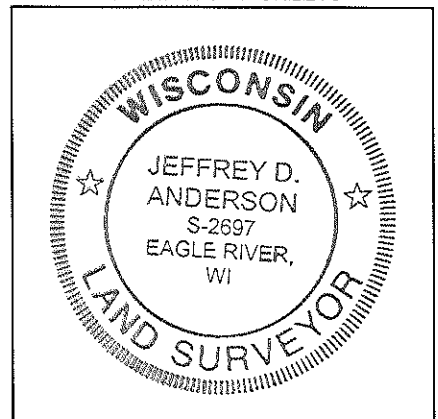
NOTE: THIS FORM IS INTENDED AND DESIGNED TO FULFILL ALL REQUIREMENTS OF WISCONSIN ADMINISTRATIVE CODE CHAPTER A-E 7.08 U.S. PUBLIC LAND SURVEY MONUMENT RECORD (3) (a)(b)(c)(d)(e)(f)(g)(h)(i). AN ADDITIONAL SHEET MAY BE ADDED IF NECESSARY TO CONFIRM WITH SAID REQUIREMENTS.

(c)(d)(e) PLAN VIEW OF CORNER WITH TIES TO AT LEAST FOUR WITNESSES. IF IN DISAGREEMENT WITH PREVIOUSLY ESTABLISHED CORNER, SHOW THE DISTANCES BETWEEN THE TWO CORNERS AND ALSO INDICATE THE TIE TO THE DISPUTED CORNER.



RECEIVED BY LINCOLN COUNTY
SURVEYOR THIS 5TH DAY
OF October 20 10
Jeffrey D. Anderson
COUNTY SURVEYOR

SHEET 2 OF 2 SHEETS



INDEX NO. M-5

I JEFFREY D. ANDERSON, REGISTERED LAND SURVEYOR NO. 2697, HEREBY CERTIFY THAT THE CORNER LOCATION ON THIS RECORD WAS REFERENCED BY ME OR UNDER MY DIRECTION AND CONTROL AND THAT THIS U.S. PUBLIC LAND SURVEY MONUMENT RECORD IS COMPLETE TO THE BEST OF MY KNOWLEDGE AND BELIEF.

Jeffrey D. Anderson 10/1/10
SIGNATURE

SOUTHEAST CORNER, SECTION 18 – LINCOLN COUNTY MON. SET



FACING NORTH



FACING SOUTH



FACING EAST



FACING WEST

