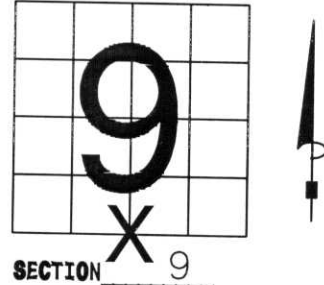


# U.S. PUBLIC LAND SURVEY MONUMENT RECORD

NOTE: THIS FORM IS INTENDED AND DESIGNED TO FULFILL ALL REQUIREMENTS OF WISCONSIN ADMINISTRATIVE CODE, CHAPTER LAND SURVEY MONUMENT RECORD (3) (a) (b) (c) (d) (e) (f) (g) (h) (i). AN ADDITIONAL SHEET MAY BE ADDED IF NECESSARY TO CONFORM WITH SAID REQUIREMENTS. A-E 7.09 U.S. PUBLIC

(a) CORNER LOCATION: TOWNSHIP 32 NORTH  
 RANGE 5 EAST/~~WEST~~  
 TOWN/~~CITY/VILLAGE~~ HARDING  
 COUNTY LINCOLN

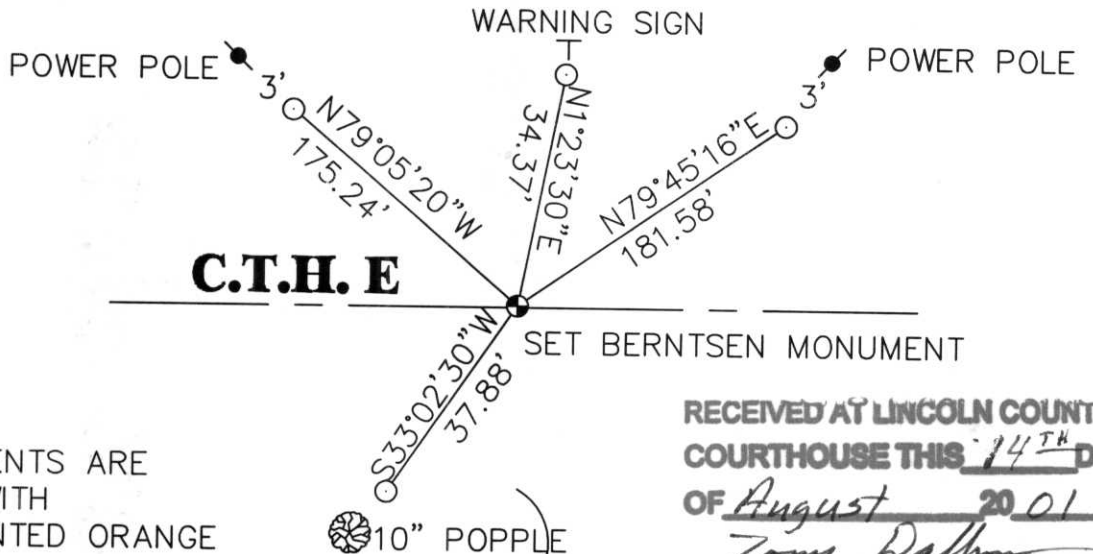


(b) (f) (g) (h) DESCRIPTION OF MONUMENT FOUND AT THIS CORNER AND IF IT WAS ACCEPTED, STATE ALL EVIDENCE (MATERIAL, TESTIMONIAL, OCCUPATIONAL, PLATS, RECORDS, OTHER MONUMENTS) USED AS BASIS FOR ACCEPTING. IF NOT ACCEPTED OR IF NOTHING WAS FOUND, STATE EVIDENCE USED AS BASIS FOR ESTABLISHING LOCATION. IF REESTABLISHED THROUGH LOST CORNER PROPORTIONATE METHODS, INDICATE ALL MONUMENTS, DISTANCES AND DIRECTIONS USED TO ESTABLISH. INDICATE TYPE OF MONUMENT FOUND OR SET AND SIGN POST.

ORIGINAL CORNER SET IN NOVEMBER, 1852, BY RICK CHANEY. DAVID AMENT, LOCAL LAND OWNER, SAID THAT IN THE 40'S, A LARGE FOREST FIRE BURNT EVERYTHING IN THIS TOWNSHIP. THERE ARE NO LARGE STUMPS IN THIS SECTION. ORIGINAL TIES: HEMLOCK 10", S35°E, 42 LINKS; HEMLOCK 18", N10°W, 8 LINKS FOUND NO EVIDENCE OF ORIGINAL TIES OR ORIGINAL WOOD POST.

PAPER MILL NOTES SAID THEY FOUND THIS CORNER. DUG BY HAND, AT 4" FOUND VERY RUSTED NAIL WITH RIBBON. AT 1 FOOT, FOUND 3/4" X 24" POINTED IRON BAR. HELD AS CORNER. SET BERNTSEN MONUMENT TIED OUT.

(c) (d) (e) PLAN VIEW OF CORNER WITH TIES TO AT LEAST 4 WITNESS MONUMENTS. IF IN DISAGREEMENT WITH PREVIOUSLY ESTABLISHED CORNER, SHOW THE DISTANCES BETWEEN THE TWO CORNERS AND ALSO INDICATE THE TIES TO THE DISPUTED CORNER.



ALL WITNESS MONUMENTS ARE 3/4" X 30" REBAR WITH ALLUMINUM CAP, PAINTED ORANGE

RECEIVED AT LINCOLN COUNTY COURTHOUSE THIS 14<sup>TH</sup> DAY OF August 20 01  
*Tony Dalman*  
 LAND INFORMATION OFFICE

(i) I, DAVID L. OSTERBRINK  
 (TYPE OR PRINT NAME) CERTIFY THAT THE CORNER LOCATION ON THIS RECORD WAS DETERMINED BY ME OR UNDER MY DIRECTION AND CONTROL AND THAT THIS U.S. PUBLIC LAND SURVEY MONUMENT RECORD IS CORRECT AND COMPLETE TO THE BEST OF MY KNOWLEDGE AND BELIEF.  
*David L. Osterbrink* AUGUST 8, 2001  
 SIGNATURE DATE



# SECTION SUMMARY, SECTIONS 9 & 10, T 32N, R5E, TOWN OF HARDING

