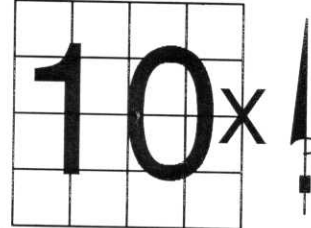


U.S. PUBLIC LAND SURVEY MONUMENT RECORD

NOTE: THIS FORM IS INTENDED AND DESIGNED TO FULFILL ALL REQUIREMENTS OF WISCONSIN ADMINISTRATIVE CODE, CHAPTER LAND SURVEY MONUMENT RECORD (3) (a) (b) (c) (d) (e) (f) (g) (h) (i). AN ADDITIONAL SHEET MAY BE ADDED IF NECESSARY TO CONFORM WITH SAID REQUIREMENTS. A-E 7.06 U.S. PUBLIC

(a) CORNER LOCATION: TOWNSHIP 32 NORTH
 RANGE 5 EAST/WEST
 TOWN/CITY/VILLAGE HARDING
 COUNTY LINCOLN



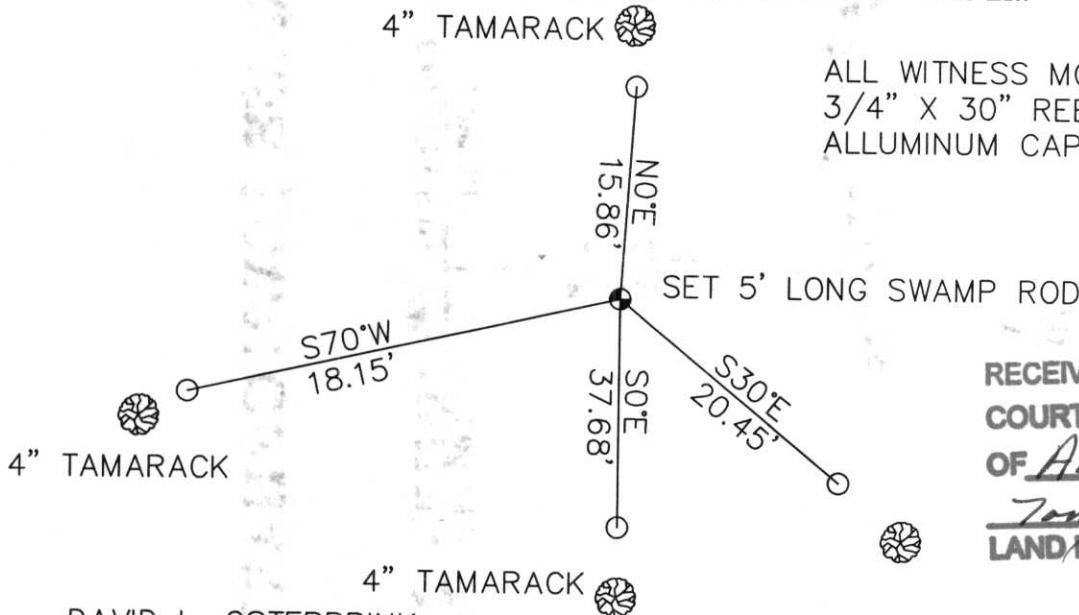
SECTION 10

(b) (f) (g) (h) DESCRIPTION OF MONUMENT FOUND AT THIS CORNER AND IF IT WAS ACCEPTED, STATE ALL EVIDENCE (MATERIAL, TESTIMONIAL, OCCUPATIONAL, PLATS, RECORDS, OTHER MONUMENTS) USED AS BASIS FOR ACCEPTING. IF NOT ACCEPTED OR IF NOTHING WAS FOUND, STATE EVIDENCE USED AS BASIS FOR ESTABLISHING LOCATION. IF REESTABLISHED THROUGH LOST CORNER PROPORTIONATE METHODS, INDICATE ALL MONUMENTS, DISTANCES AND DIRECTIONS USED TO ESTABLISH. INDICATE TYPE OF MONUMENT FOUND OR SET AND SIGN POST.

ORIGINAL CORNER SET IN NOVEMBER, 1852, BY RICK CHANEY. DAVID AMENT, LOCAL LAND OWNER, SAID THAT IN THE 40'S, A LARGE FOREST FIRE BURNT EVERYTHING IN THIS TOWNSHIP. THERE ARE NO LARGE STUMPS IN THIS SECTION. TREES WITHIN 200 FEET OF THIS CORNER ARE ONLY 5" DIAMETER. FOUND NO EVIDENCE OF ORIGINAL TIES OR ORIGINAL WOOD POST.

DAVID AMENT, LONG TIME RESIDENT, SAID THERE WAS A 1" IRON PIPE OUT IN SWAMP. HE DIDN'T KNOW HOW IT GOT THERE, BUT FELT IT WAS THE CORNER. WALKED OUT INTO BOG/SWAMP. FOUND 1" X 5' IRON PIPE. FOUND RIBBON LINE GOING NORTH AND SOUTH FROM CORNER. SET 5' SWAMP MONUMENT. TIED OUT. SHOT THIS CORNER WITH GPS. IT IS A VERY DRY YEAR, I DOUBT THAT THIS CORNER WILL BE ACCESSABLE IN A WET SUMMER.

(c) (d) (e) PLAN VIEW OF CORNER WITH TIES TO AT LEAST 4 WITNESS MONUMENTS. IF IN DISAGREEMENT WITH PREVIOUSLY ESTABLISHED CORNER, SHOW THE DISTANCES BETWEEN THE TWO CORNERS AND ALSO INDICATE THE TIES TO THE DISPUTED CORNER.



ALL WITNESS MONUMENTS ARE 3/4" X 30" REBAR WITH ALLUMINUM CAP, PAINTED ORANGE

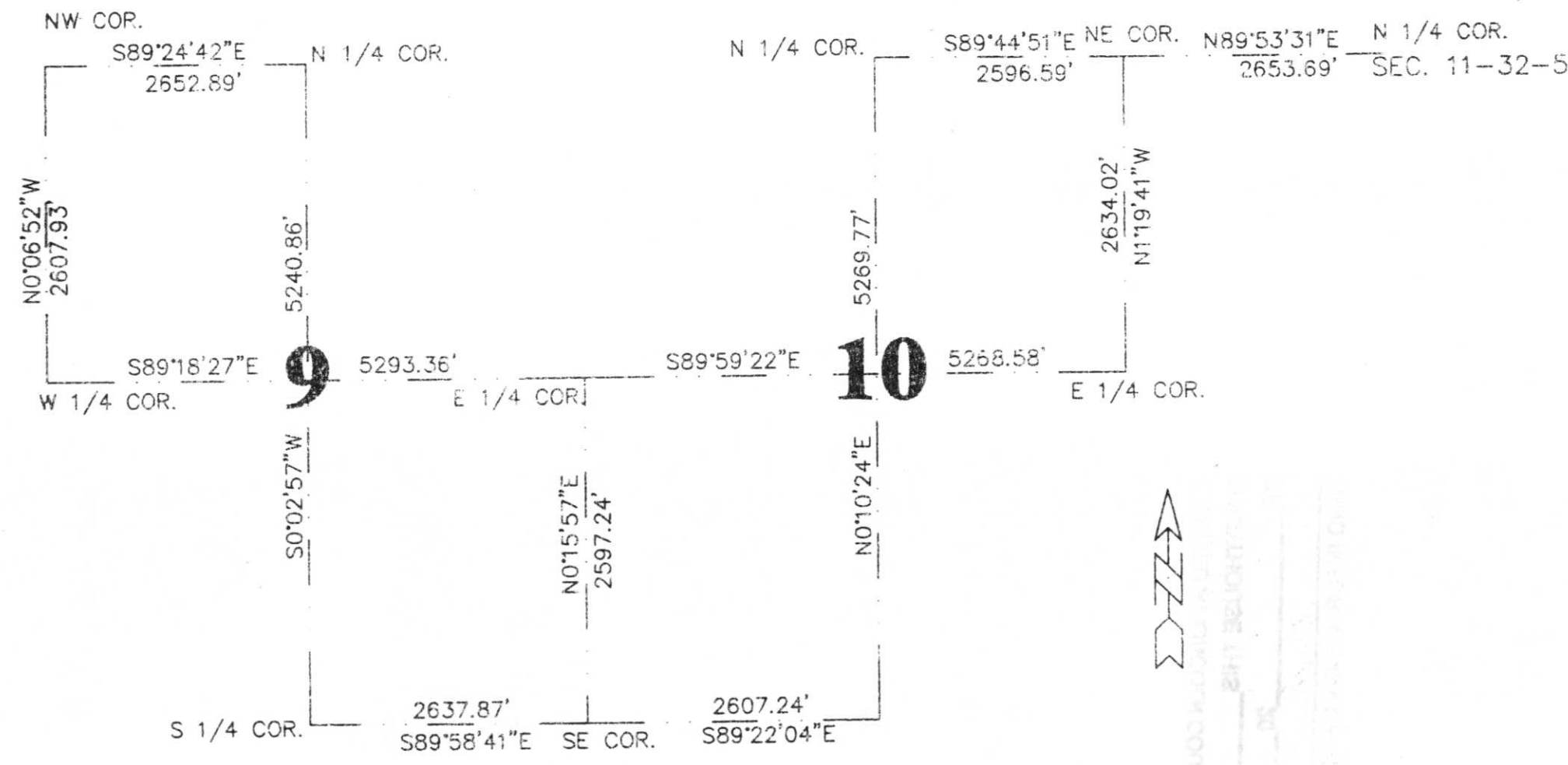
RECEIVED AT LINCOLN COUNTY
 COURTHOUSE THIS 14TH DAY
 OF August 2001
Tom Dahn
 LAND INFORMATION OFFICE

(i) I, DAVID L. OSTERBRINK
 (TYPE OR PRINT NAME) CERTIFY THAT THE CORNER LOCATION ON THIS RECORD WAS DETERMINED BY ME OR UNDER MY DIRECTION AND CONTROL AND THAT THIS U.S. PUBLIC LAND SURVEY MONUMENT RECORD IS CORRECT AND COMPLETE TO THE BEST OF MY KNOWLEDGE AND BELIEF.
David L. Osterbrink AUGUST 8, 2001
 SIGNATURE DATE



INDEX NO. 6-17

SECTION SUMMARY, SECTIONS 9 & 10, T 32N, R5E, TOWN OF HARDING





LINCOLN COUNTY

32 N 5E

10



1

3-2011







