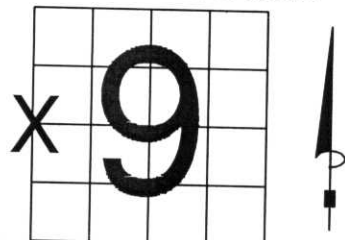


# U.S. PUBLIC LAND SURVEY MONUMENT RECORD

NOTE: THIS FORM IS INTENDED AND DESIGNED TO FULFILL ALL REQUIREMENTS OF WISCONSIN ADMINISTRATIVE CODE, CHAPTER LAND SURVEY MONUMENT RECORD (3) (a) (b) (c) (d) (e) (f) (g) (h) (i). AN ADDITIONAL SHEET MAY BE ADDED IF NECESSARY TO CONFORM WITH SAID REQUIREMENTS. A-E 7.08 U.S. PUBLIC

(a) CORNER LOCATION: TOWNSHIP 32 NORTH  
 RANGE 5 EAST/WEST  
 TOWN/CITY/VILLAGE HARDING  
 COUNTY LINCOLN



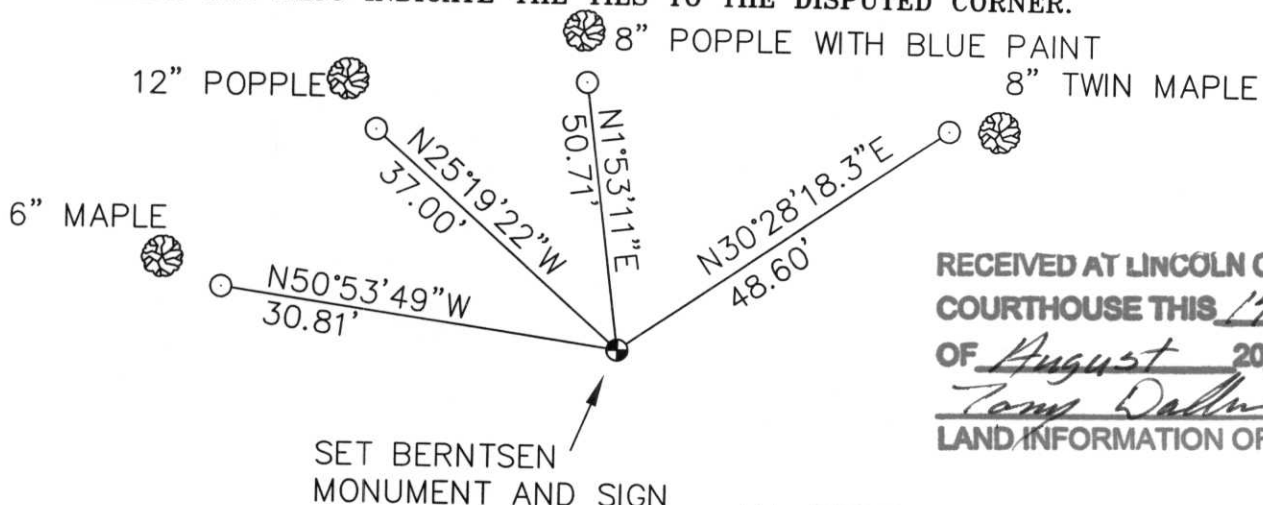
SECTION 9

(b) (f) (g) (h) DESCRIPTION OF MONUMENT FOUND AT THIS CORNER AND IF IT WAS ACCEPTED, STATE ALL EVIDENCE (MATERIAL, TESTIMONIAL, OCCUPATIONAL, PLATS, RECORDS, OTHER MONUMENTS) USED AS BASIS FOR ACCEPTING. IF NOT ACCEPTED OR IF NOTHING WAS FOUND, STATE EVIDENCE USED AS BASIS FOR ESTABLISHING LOCATION. IF REESTABLISHED THROUGH LOST CORNER PROPORTIONATE METHODS, INDICATE ALL MONUMENTS, DISTANCES AND DIRECTIONS USED TO ESTABLISH. INDICATE TYPE OF MONUMENT FOUND OR SET AND SIGN POST.

ORIGINAL CORNER SET IN NOVEMBER, 1852, BY RICK CHANEY. DAVID AMENT, LOCAL LAND OWNER, SAID THAT IN THE 40'S, A LARGE FOREST FIRE BURNT EVERYTHING IN THIS TOWNSHIP. THERE ARE NO LARGE STUMPS IN THIS SECTION. ORIGINAL TIES: TAMARACK 10", S42°W, 10 LINKS; TAMARACK 12", N85°E, 16 LINKS FOUND NO EVIDENCE OF ORIGINAL TIES, OR ORIGINAL WOOD POST.

TRAVERSED INTO AREA. FOUND 1" X 4' IRON PIPE, ON EDGE OF SWAMP. LINE WAS CLEAR CUT TO SOUTH AND PAINTED BLUE. LINE WAS CLEAR CUT TO WEST. TO NORTH LINE WAS PAINTED BLUE. WOULD HAVE PREFERRED CORNER TO BE SOUTH 50 FEET, BUT EXISTING IRON WAS ABOUT 66 FEET SOUTH OF EDGE OF SWAMP AS CALLED FOR IN NOTES. HELD EXISTING PIPE. SET BERNTSEN MONUMENT, TIED OUT.

(c) (d) (e) PLAN VIEW OF CORNER WITH TIES TO AT LEAST 4 WITNESS MONUMENTS. IF IN DISAGREEMENT WITH PREVIOUSLY ESTABLISHED CORNER, SHOW THE DISTANCES BETWEEN THE TWO CORNERS AND ALSO INDICATE THE TIES TO THE DISPUTED CORNER.



RECEIVED AT LINCOLN COUNTY  
 COURTHOUSE THIS 14<sup>TH</sup> DAY  
 OF August 20 01  
*Tom Dallen*  
 LAND INFORMATION OFFICE

ALL WITNESS MONUMENTS ARE  
 3/4" X 30" REBAR WITH  
 ALLUMINUM CAP, PAINTED ORANGE

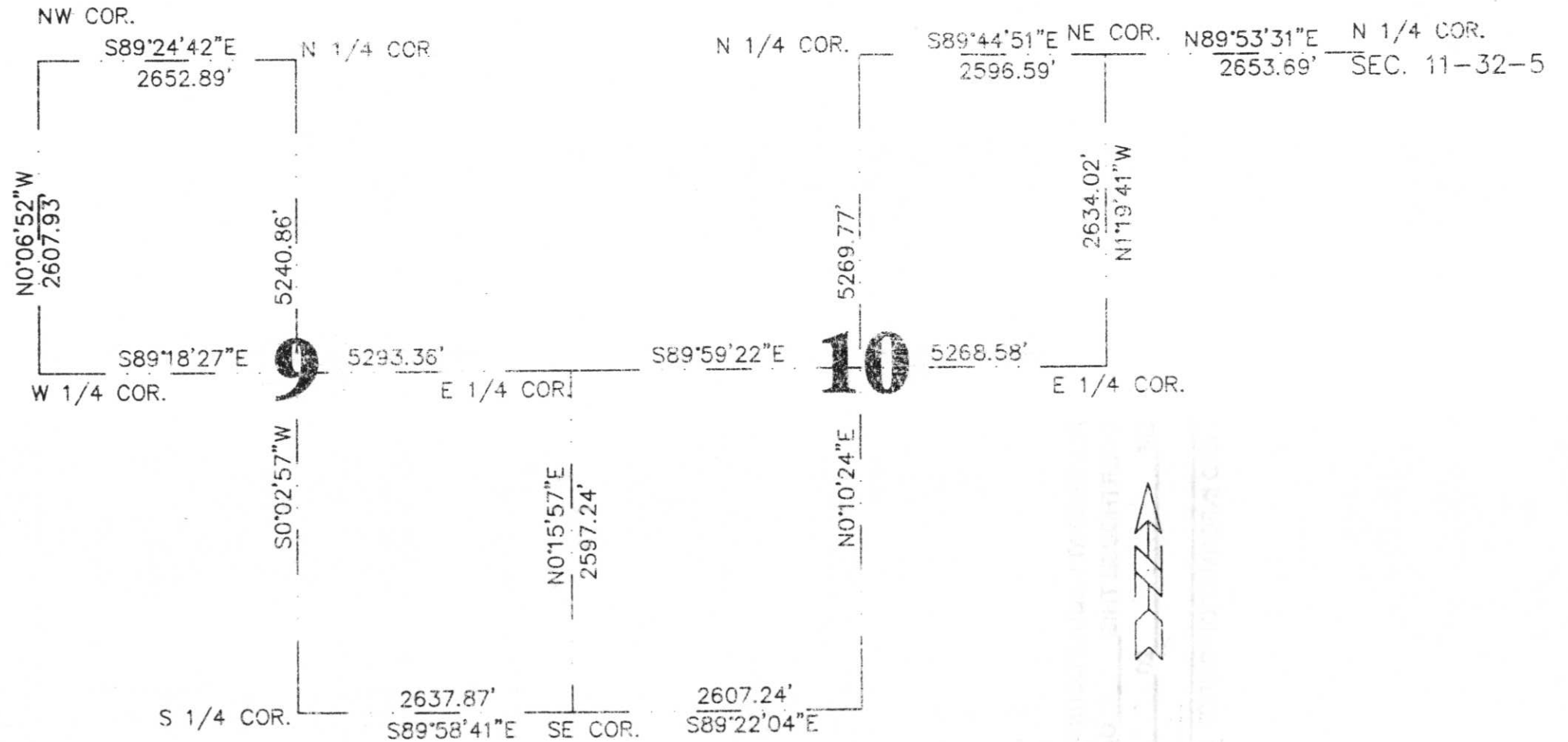
(i) I, DAVID L. OSTERBRINK  
 (TYPE OR PRINT NAME) CERTIFY THAT THE CORNER  
 LOCATION ON THIS RECORD WAS DETERMINED BY ME  
 OR UNDER MY DIRECTION AND CONTROL AND THAT  
 THIS U.S. PUBLIC LAND SURVEY MONUMENT RECORD  
 IS CORRECT AND COMPLETE TO THE BEST OF MY  
 KNOWLEDGE AND BELIEF.

*David L. Osterbrink* AUGUST 8, 2001  
 SIGNATURE DATE



INDEX NO. 6-9

# SECTION SUMMARY, SECTIONS 9 & 10, T 32N, R5E, TOWN OF HARDING





LINCOLN COUNTY  
PENALTY FOR DISTURBING  
SURVEY  
MARKER  
MARKER

32N

8

9

5E



U.S. POLO ASSN.  
1987-90





