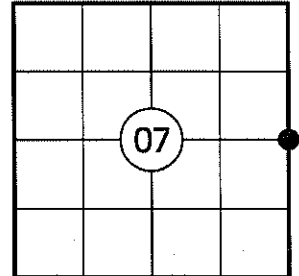


U.S. PUBLIC LAND SURVEY MONUMENT RECORD

NOTE: THIS FORM IS INTENDED AND DESIGNED TO FULFILL ALL REQUIREMENTS OF WISCONSIN ADMINISTRATIVE CODE CHAPTER A-E 7.08 U.S. PUBLIC LAND SURVEY MONUMENT RECORD (3) (a)(b)(c)(d)(e)(f)(g)(h)(i). AN ADDITIONAL SHEET MAY BE ADDED IF NECESSARY TO CONFIRM WITH SAID REQUIREMENTS.

(a) CORNER LOCATION:

EAST 1/4 CORNER OF SECTION 7
 TOWNSHIP 32 NORTH
 RANGE 5 EAST
 TOWN OF HARDING
 COUNTY OF LINCOLN



(b) HISTORY OF ORIGINAL CORNER:

ORIGINAL SURVEYOR: RICHARD O. CHANEY
 DATE OF SURVEY: NOVEMBER, 1852

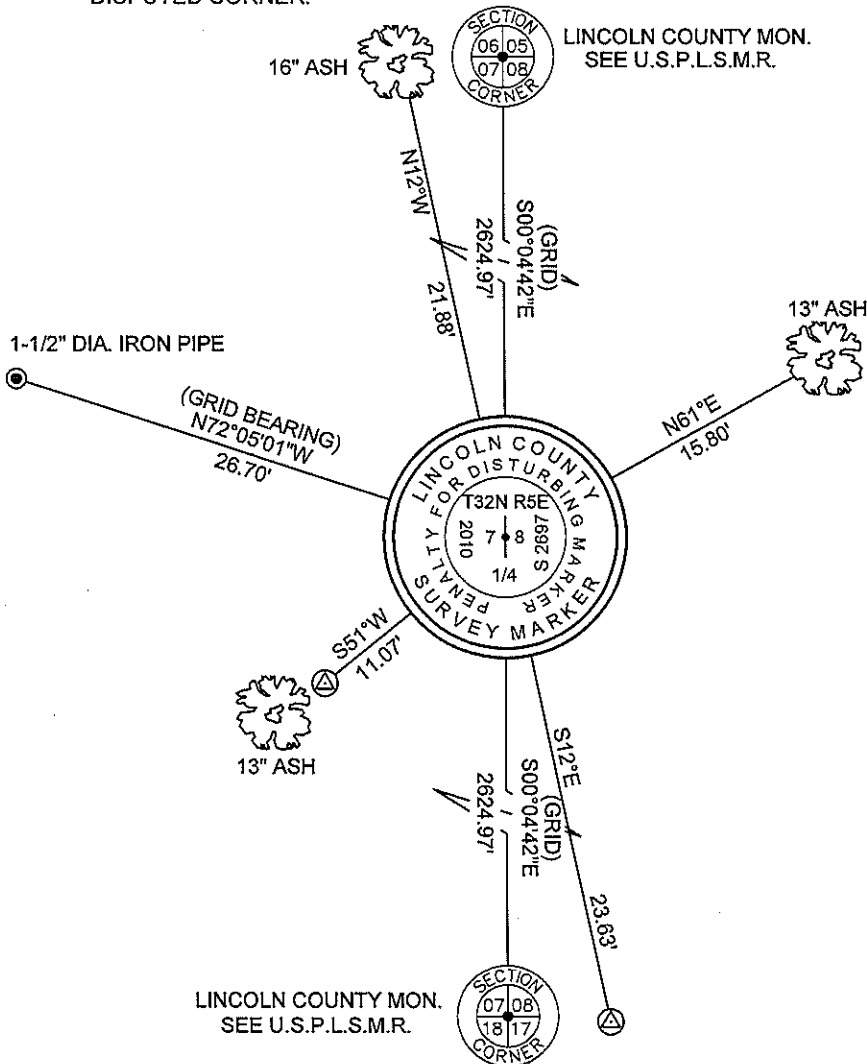
ORIGINAL BEARING TREES: 10" HEMLOCK - S39°E, 33 LKS
 12" HEMLOCK - N70W°W, 18 LKS

(f)(g)(h) DESCRIPTION OF MONUMENT FOUND AT THIS CORNER AND IF IT WAS ACCEPTED STATE ALL EVIDENCE (MATERIAL, TESTIMONIAL, OCCUPATIONAL, PLATS, RECORDS, OTHER MONUMENTS) USED AS A BASIS FOR ESTABLISHING LOCATION. IF REESTABLISHING THROUGH LOST CORNER PROPORTIONATE METHODS, INDICATE ALL MONUMENTS, DISTANCES, AND DIRECTIONS USED TO ESTABLISH. INDICATE TYPE OF MONUMENT AND SIGN POST FOUND OR SET.

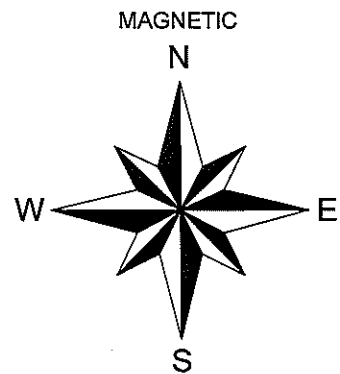
1852: RICHARD O. CHANEY SET THE ORIGINAL 1/4 SECTION CORNER POST.

09/30/2010: I SEARCHED THE AREA AND FOUND NO EVIDENCE OF THE ORIGINAL CORNER. A BLUE LINE RUNS EAST AND WEST THROUGH THE SEARCH AREA. I POSITIONED THIS CORNER BY SINGLE PROPORTION. A 1-1/2" DIA IRON PIPE OF UNKNOWN ORIGIN BEARS NORTHWEST, 26.7' FROM THE PROPORTIONED POSITION. LOCAL LANDOWNERS DID NOT KNOW HOW OR WHO SET THE PIPE. I SET A LINCOLN COUNTY ALUMINUM BERNTSEN BREAKAWAY MONUMENT, MADE TWO BEARING TREES AND SET TWO 3/4" DIA. REBAR WITH ALUMINUM CAPS AS REFERENCE MONUMENTS. I SET A WHITE PLASTIC POST 1' NORTH.

(c)(d)(e) PLAN VIEW OF CORNER WITH TIES TO AT LEAST FOUR WITNESSES. IF IN DISAGREEMENT WITH PREVIOUSLY ESTABLISHED CORNER, SHOW THE DISTANCES BETWEEN THE TWO CORNERS AND ALSO INDICATE THE TIE TO THE DISPUTED CORNER.



⊗ 3/4" DIA. CAPPED REBAR SET

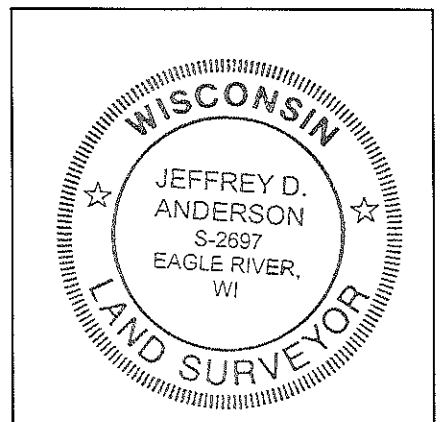


NOT TO SCALE
 DISTANCES TO BT'S ARE TO NAIL IN SIDE

RECEIVED BY LINCOLN COUNTY
 SURVEYOR THIS 5TH DAY

OF October 20 2010

Tom Daller
 COUNTY SURVEYOR



INDEX NO. G-5

I JEFFREY D. ANDERSON, REGISTERED LAND SURVEYOR NO. 2697, HEREBY CERTIFY THAT THE CORNER LOCATION ON THIS RECORD WAS REFERENCED BY ME OR UNDER MY DIRECTION AND CONTROL AND THAT THIS U.S. PUBLIC LAND SURVEY MONUMENT RECORD IS COMPLETE TO THE BEST OF MY KNOWLEDGE AND BELIEF.

Jeffrey D. Anderson 10/1/10
 SIGNATURE