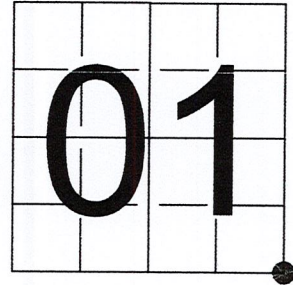


U S PUBLIC LAND SURVEY MONUMENT RECORD

NOTE: This form is intended and designed to fulfill all requirements of Wisconsin Administrative Code, Chapter A-E 7.08 U.S. Public Land Survey Monument Record (3) (a-i)

A-E 7.08(3)(a) Identity of corner:
SOUTHEAST CORNER SECTION 01,
TOWNSHIP 32 NORTH,
RANGE 05 EAST OF THE 4TH PM,
TOWN OF HARDING,
COUNTY OF LINCOLN

WISCORS - LINCOLN COUNTY
N: 158,606.005 USft (158,606.100)
E: 364,657.421 USft (364,657.399)
Datum: NAD83 (2011)
GNSS Method RTK
Base from GNSS Control set WISCORS VRS



The coordinate value shown has been verified by the average of two or more GPS observations at a markedly different time. Coordinates shown in parenthesis are provided by Lincoln County.

A-E 7.08(3)(b)

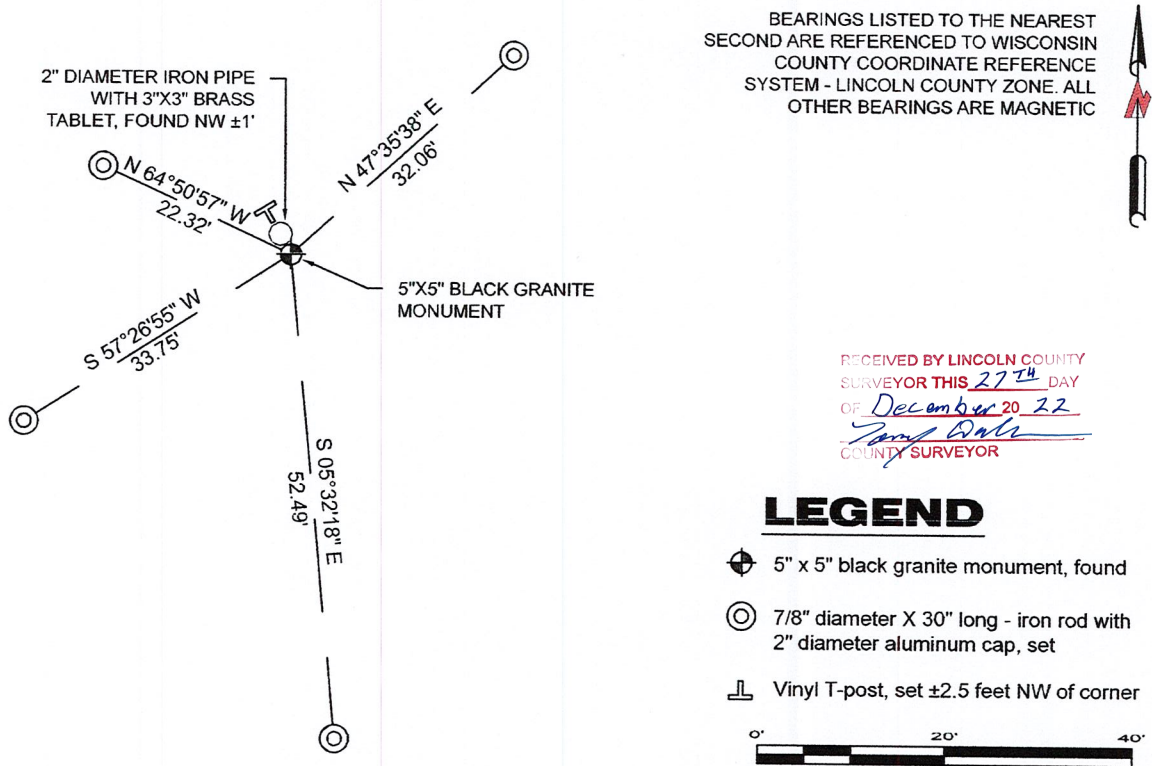
Original Surveyor: James M. Marsh

Date of Original Survey	Commenced:	July 8, 1851	Original Accessories:	
	Completed:	July 28, 1851	Birch	12 S 21° E 46 Links
			Elm	12 S 6° W 65 Links
			Birch	8 N 33° W 25 Links
			Birch	9 N 15° E 28 Links

1941 - Francis X. Fox (aka Francis X. Fuchs) - Survey of TWP., 32 & 33 N. ~ R.6 E. Town of Rock Falls - indicates "set corners to all forties on all quarter & section lines" on Map M136A.

November 6, 2022 - While performing the 2022 Lincoln County PLSS Corner Remonumentation and GPS Services project, I found a 5"x5" black granite stone near the computed position provided by Lincoln County. I also found a 2" diameter iron pipe with a 3" x 3" brass tablet stamped to identify corner. Iron pipe extends ±36" above grade. I established 4 new reference monuments as shown below.

A-E 7.08(3)(c)(d) Plan view of corner with references to at least 4 witness monuments.

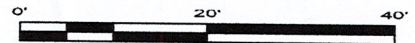


BEARINGS LISTED TO THE NEAREST SECOND ARE REFERENCED TO WISCONSIN COUNTY COORDINATE REFERENCE SYSTEM - LINCOLN COUNTY ZONE. ALL OTHER BEARINGS ARE MAGNETIC

RECEIVED BY LINCOLN COUNTY
SURVEYOR THIS 27TH DAY
OF December 20 22
Jeffrey DeMuth
COUNTY SURVEYOR

LEGEND

- 5" x 5" black granite monument, found
- 7/8" diameter X 30" long - iron rod with 2" diameter aluminum cap, set
- Vinyl T-post, set ±2.5 feet NW of corner



A-E 7.08(3)(e) 1851 Surveyor set a post, 1941 Surveyor set a granite stone monument. I found 5" x 5" black granite stone.

A-E 7.08(3)(f) I accept this monument as a FOUND PERPETUATED LOCATION of the corner.

A-E 7.08(3)(g)(h) This corner was not determined through lost-corner-proportionate methods.

A-E 7.08(3)(i) I, Jeffrey L. DeMuth, Professional Land Surveyor No. S-2656, hereby certify that the corner location on this record was determined by the Lincoln County Surveyor, and the monuments found or set as shown hereon were measured by me or under my direction and control, and that this U.S. Public Land Survey Monument Record is correct and complete to the best of my knowledge, and belief.

SIGNATURE

December 14, 2022

DATE



E-25

REPORT

2022-Lincoln County PLSS Corner Remonumentation and GPS Services

Wisconsin Corner Point Identification Number: 43205010000

Surveyor: Jeffrey L. DeMuth – S2656

Corner monument: Found 5" x 5" black granite stone.

Field Book: Cardinal North – Lincoln Co. Remon. – 2022-00

Page: 64

Horizontal Datum: WisCRS – Lincoln County Zone – NAD83(2011)

Date / time of initial measurement:

November 6, 2022 - Start 12:20:22 CST – End 12:28:59 CST

Reference monuments:

4 – Set - 7/8" diameter X 30" long iron rods with 2" diameter Lincoln Co. aluminum cap.

1 - Found – 2" diameter iron pipe with 3"x3" brass tablet stamped to identify corner.

Coordinate Table

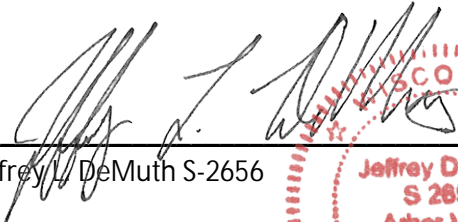
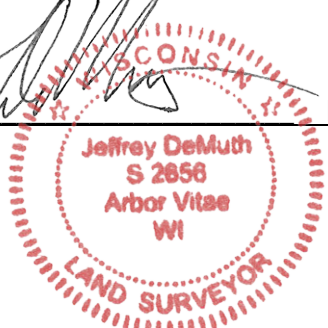
	County Provided	2022 Measurement	Difference
North	158606.100	158606.005	0.10
East	364657.399	364657.421	-0.02

Observed coordinates match with existing coordinates within reason.

Request Data Log for more information.

Additional Notes:

Observed point using base station-Base from GNSS Control set from WISCORS VRS.


 Jeffrey L. DeMuth S-2656
 
 November 15, 2022
 Date

43205010000_Mon-N



43205010000_North



43205010000_West



43205010000_South



43205010000_East

