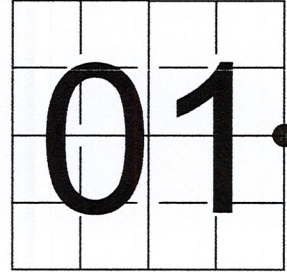


# U S PUBLIC LAND SURVEY MONUMENT RECORD

NOTE: This form is intended and designed to fulfill all requirements of Wisconsin Administrative Code, Chapter A-E 7.08 U.S. Public Land Survey Monument Record (3) (a-i)

A-E 7.08(3)(a) Identity of corner:  
 EAST 1/4 CORNER SECTION 01,  
 TOWNSHIP 32 NORTH,  
 RANGE 05 EAST OF THE 4TH PM,  
 TOWN OF HARDING,  
 COUNTY OF LINCOLN

WISCORS - LINCOLN COUNTY  
 N: 161,246.562 USft (161,246.439)  
 E: 364,661.893 USft (364,661.509)  
 Datum: NAD83 (2011)  
 GNSS Method RTK  
 Base from GNSS Control set WISCORS VRS



The coordinate value shown has been verified by the average of two or more GPS observations at a markedly different time. Coordinates shown in parenthesis are provided by Lincoln County.

A-E 7.08(3)(b)

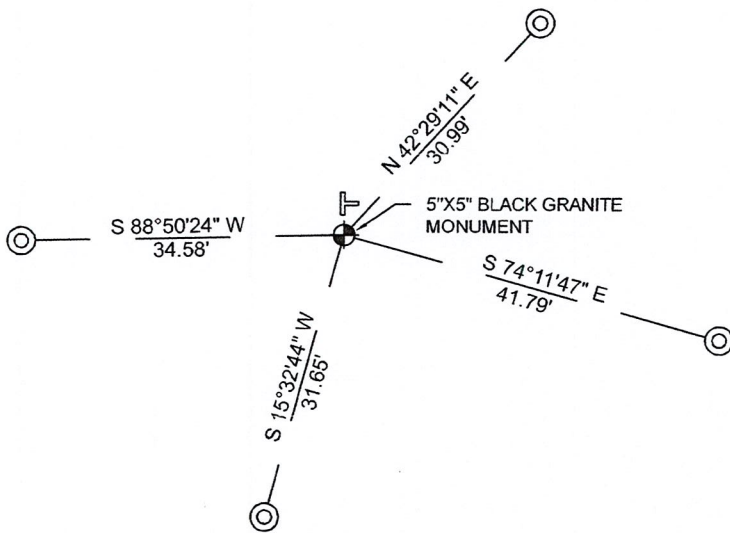
Original Surveyor: James M. Marsh

Date of Original Survey	Commenced:	July 8, 1851	Original Accessories:		
	Completed:	July 28, 1851	Birch	8 S 28° E	47 Links
			Birch	9 S 57° W	21 Links
			Black Ash	12 N 60° W	16 Links
			Hemlock	8 N 32° E	29 Links

1941 - Francis X. Fox (aka Francis X. Fuchs) - Survey of TWP., 32 & 33 N. ~ R.6 E. Town of Rock Falls - indicates "set corners to all forties on all quarter & section lines" on Map M136A.

November 6, 2022 - While performing the 2022 Lincoln County PLSS Corner Remonumentation and GPS Services project, I found a 5"x5" black granite stone near the computed position provided by Lincoln County. Monument is in a seasonal swamp. I established 4 new reference monuments as shown below.

A-E 7.08(3)(c)(d) Plan view of corner with references to at least 4 witness monuments.



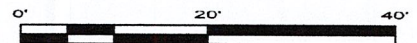
BEARINGS LISTED TO THE NEAREST SECOND ARE REFERENCED TO WISCONSIN COUNTY COORDINATE REFERENCE SYSTEM - LINCOLN COUNTY ZONE. ALL OTHER BEARINGS ARE MAGNETIC



RECEIVED BY LINCOLN COUNTY  
 SURVEYOR THIS 27<sup>TH</sup> DAY  
 OF December 20 22  
*Jeffrey DeMuth*  
 COUNTY SURVEYOR

## LEGEND

- 5" x 5" black granite monument, found
- 1" diameter X 32" long - aluminum pipe with 2.5" diameter aluminum cap, set
- Vinyl T-post, set ±2 feet north of corner



A-E 7.08(3)(e) 1851 Surveyor set a post, 1941 Surveyor set a granite stone monument. I found 5" x 5" black granite stone.

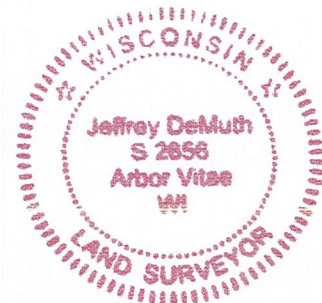
A-E 7.08(3)(f) I accept this monument as a FOUND PERPETUATED LOCATION of the corner.

A-E 7.08(3)(g)(h) This corner was not determined through lost-corner-proportionate methods.

A-E 7.08(3)(i) I, Jeffrey L. DeMuth, Professional Land Surveyor No. S-2656, hereby certify that the corner location on this record was determined by the Lincoln County Surveyor, and the monuments found or set as shown hereon were measured by me or under my direction and control, and that this U.S. Public Land Survey Monument Record is correct and complete to the best of my knowledge, and belief.

*Jeffrey L. DeMuth*  
 \_\_\_\_\_  
 SIGNATURE

December 14, 2022  
 \_\_\_\_\_  
 DATE



4-25

## REPORT

### 2022-Lincoln County PLSS Corner Remonumentation and GPS Services

Wisconsin Corner Point Identification Number: 43205012000

Surveyor: Jeffrey L. DeMuth – S2656

Corner monument: Found 5" x 5" black granite stone.

Field Book: Cardinal North – Lincoln Co. Remon. – 2022-00

Page: 64

Horizontal Datum: WisCRS – Lincoln County Zone – NAD83(2011)

Date / time of initial measurement:

November 6, 2022 - Start 11:14:06 CST – End 11:22:32 CST

Reference monuments:

4 – Set - 1" diameter X 32" long aluminum pipe with 2.5" diameter Lincoln Co. aluminum cap.

#### Coordinate Table

	County Provided	2022 Measurement	Difference
North	161246.439	161246.562	-0.12
East	364661.509	364661.893	-0.38

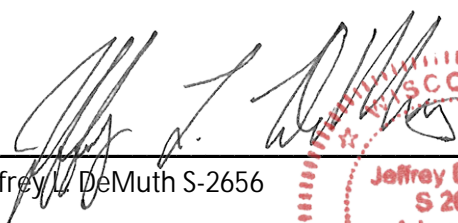
Observed coordinates match with existing coordinates within reason.

Request Data Log for more information.


#### Additional Notes:

Corner falls in a seasonal swamp.

Observed point using base station-Base from GNSS Control set from WISCORS VRS.

  
Jeffrey L. DeMuth S-2656

November 15, 2022  
Date





43205012000\_Mon-N



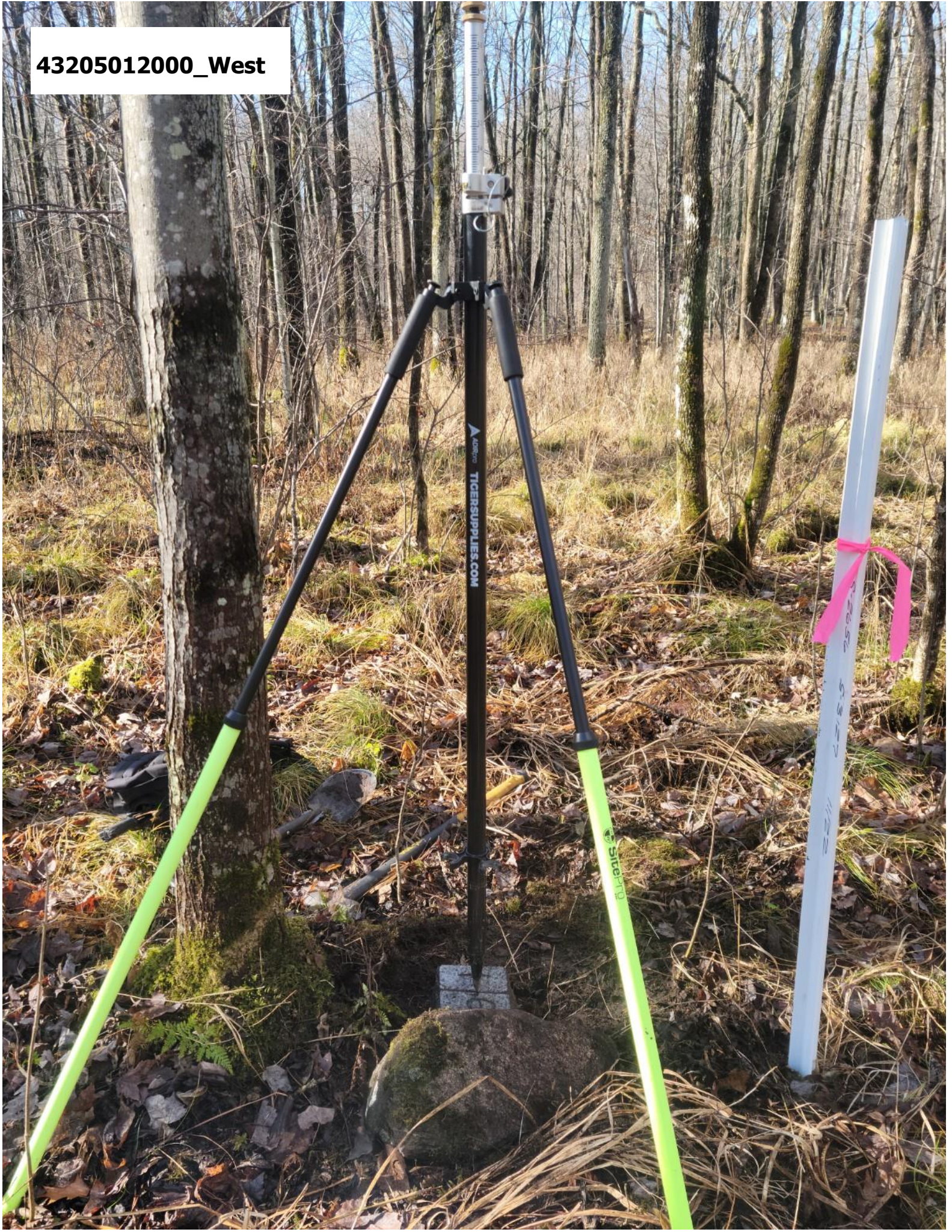


43205012000\_North



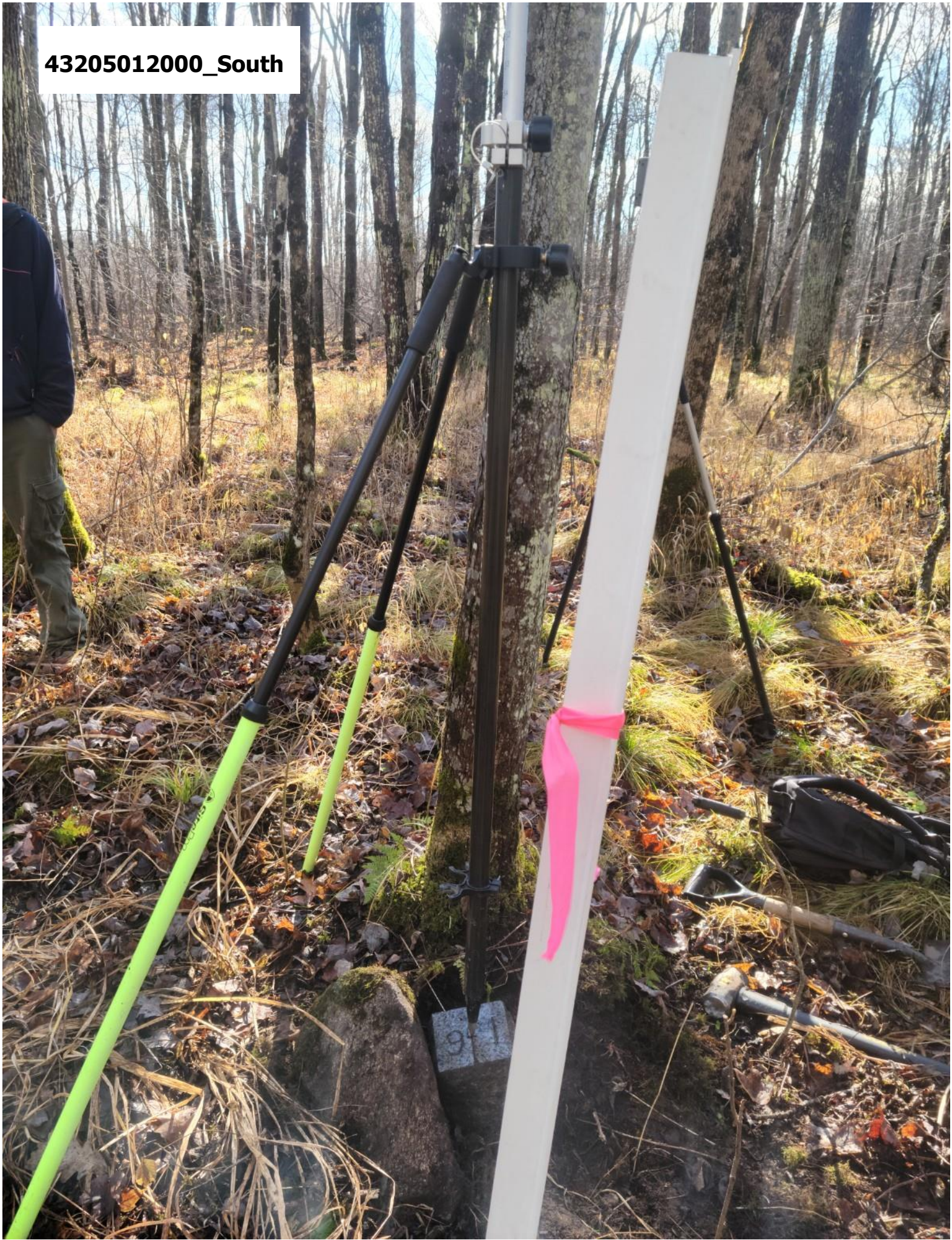


43205012000\_West





43205012000\_South





43205012000\_East

43205012000

