

# U.S. PUBLIC LAND SURVEY MONUMENT RECORD

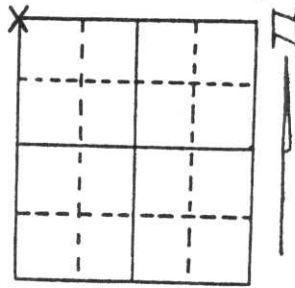
Note: This form is intended and designed to fulfill all requirements of Wisconsin Administrative Code, Chapter A-E 5.02, U.S. Public Land Survey Monument Record (3) (a) (b) (c) (d) (e) (f) (g) (h) (i). An additional sheet may be added if necessary to conform with said requirements.

(a) Corner location: Township 31 North

Range 5 East

Town/City/Village CORNING

County LINCOLN

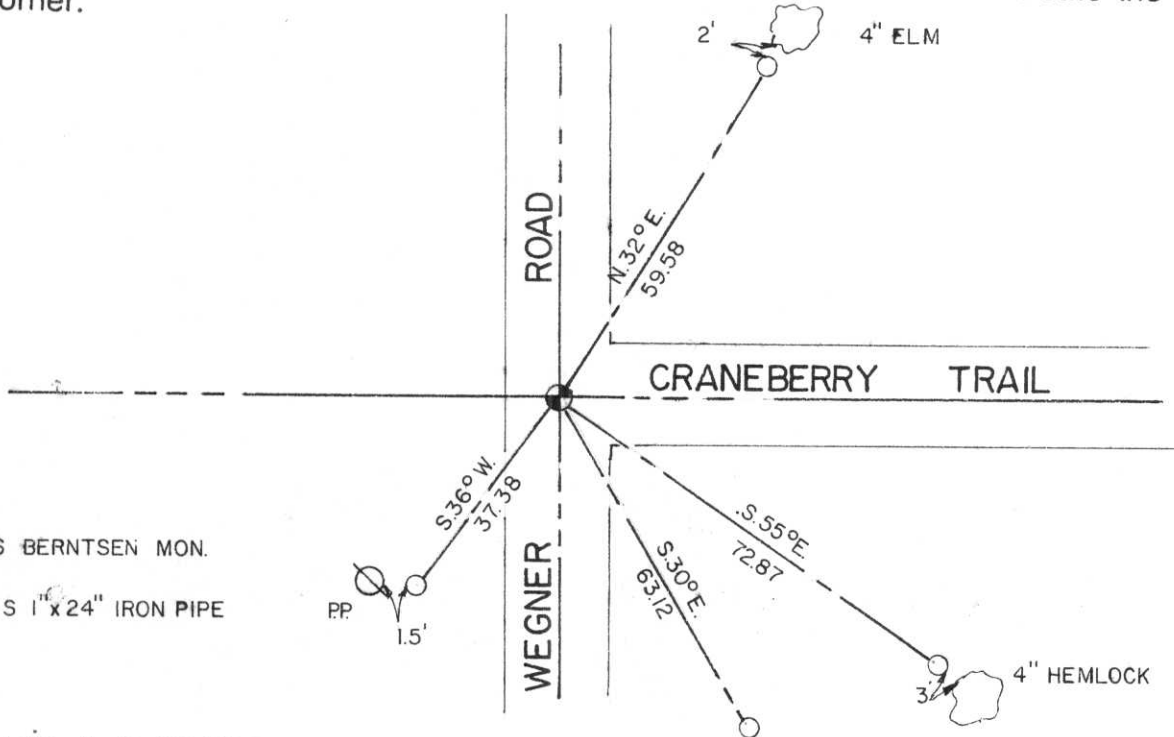


Section 6

(b) (f) (g) (h) Description of monument found at this corner and if it was accepted, state all evidence (material, testimonial, occupational, plats, records, other monuments) used as a basis for accepting. If not accepted or if nothing was found, state evidence used as basis for establishing location. If reestablished through lost corner proportionate methods, indicate all monuments, distances and directions used to establish.

There was no local testimony available that had witnessed a stone in this area. I dug at the centerline - centerline location and found no evidence. I accepted this location as the best evidence for the corner location. I also fit a south bound fenceline at the north 1/4 corner using this location.

(c) (d) (e) Plan view of corner with ties to at least 4 witness monuments. If in disagreement with previously established corner, show the distances between the two corners and also indicate the ties to the disputed corner.



⊕ = DENOTES BERNTSEN MON.

○ = DENOTES 1" x 24" IRON PIPE

(i) I, THOMAS A. RADENZ

(type or print name) certify that the corner location on this record was determined by me or under my direction and control and that this U.S. Public Land Survey Monument Record is correct and complete to the best of my knowledge and belief.

*Thomas A. Radenz*

Signature

12-28-93

Date



Index No. A-1











