

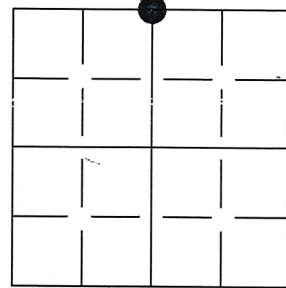
U S PUBLIC LAND SURVEY MONUMENT RECORD

NOTE: This form is intended and designed to fulfill all requirements of Wisconsin Administrative Code, Chapter A-E 7.08 U.S. Public Land Survey Monument Record (3) (a-i)

(a) CORNER LOCATION

NORTH 1/4 CORNER OF SECTION 34
TOWNSHIP 32 NORTH
RANGE 04 EAST OF THE 4TH PM
TOWN OF CORNING
COUNTY OF LINCOLN

WISCRS - LINCOLN COUNTY
N: 137946.62 USft
E: 319564.65 USft
Datum: NAD83 (2011)
GNSS Method RTN - Direct
GNSS Control WISCORS VRS



(b) HISTORY OF ORIGINAL CORNER ESTABLISHMENT

Original Surveyor: William Daugherty

Original Accessories:

Date of Survey Commenced: Jan. 3rd 1862
Completed: Jan 11th, 1862

Hemlock (22") N46°W
Sugar Maple (10") S39°E, 32 links

(b)(f)(g)(h) Description of monument found at this corner and if it was accepted, state all evidence (material, testimonial, occupational, plats, records, other monuments) used as a basis for accepting. If not accepted or if nothing was found, state evidence used as basis for establishing location. If re-established through lost corner proportionate methods, indicate all monuments, distances and directions used to establish. Indicate type of monument and sign post found or set.

Nov. 1997 – Daniel E Higginbotham set Railroad spike in the centerline of CTH M from the following references:

- Found Brass Cap set in Concrete: North, 36.90'
- Found Lincoln County Witness Cap: N48°26'10"E, 54.47'
- Found Lincoln County Witness Cap: S20°17'07"E, 56.36'
- Found Lincoln County Witness Cap: S45°24'29"W, 60.48'

Mar. 1998 – David L Lemke found PK nail in the centerline of CTH M with the following references:

- Found Brass Cap set in Concrete: North, 36.90'
- Found Lincoln County Witness Cap: N48°30'15"E, 54.45'
- Found Lincoln County Witness Cap: S20°16'47"E, 56.43'
- Found Lincoln County Witness Cap: S45°20'49"W, 60.53'

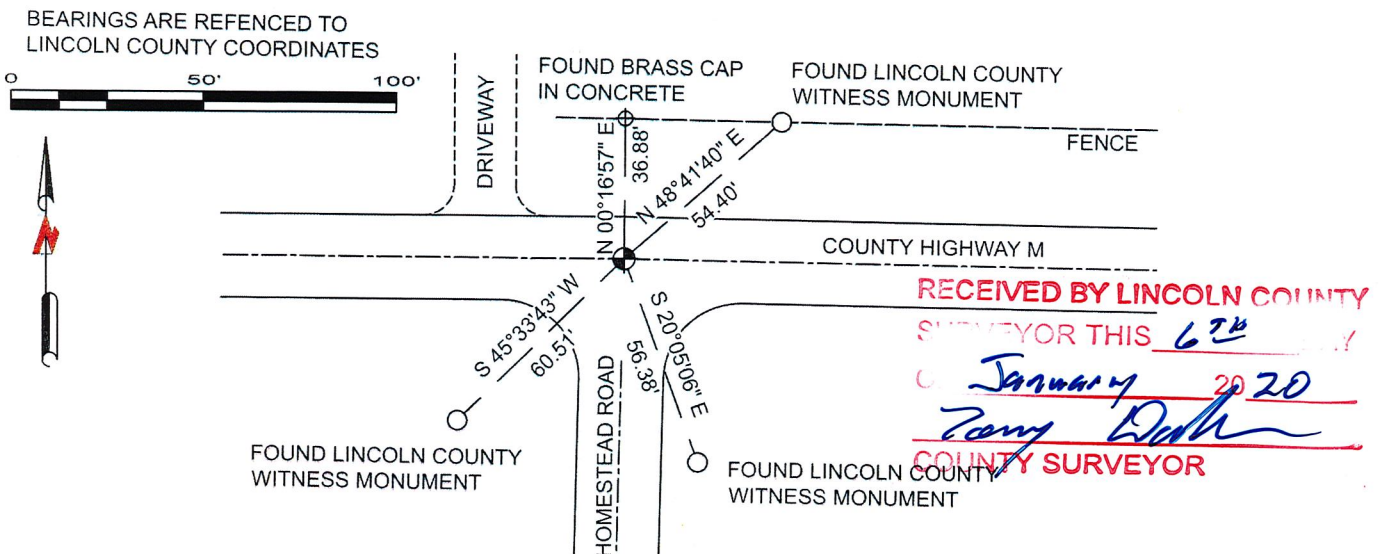
July 2004 – David L. Osterbrink referenced corner location from ties on CSM.

April 2007 – David L. Osterbrink referenced corner location from ties on CSM.

MAY 2019 - I set a MAG nail at the corner position from existing ties as shown below.

The coordinate value shown has been verified by at least one of the following methods: 1) comparison to a previously GPS determined published value, 2) the value is the average of two or more CPS observations at a markedly different time; 3) one or more distances were measured back to the GPS observed corner from temporary CPS observed offset locations.

(c)(d)(e) Plan view of corner with ties to at least 4 witness monuments. If in disagreement with previously established corner, show the distances between the two corners and also indicate the ties to the disputed.



(i) I, James E Anderson, Professional Land Surveyor No. S-3127, hereby certify that the corner location on this record was determined by me or under my direction and control and that this U.S. Public Land Survey Monument Record is correct and complete to the best of my knowledge, and belief

James E Anderson

12/22/2019

SIGNATURE

DATE



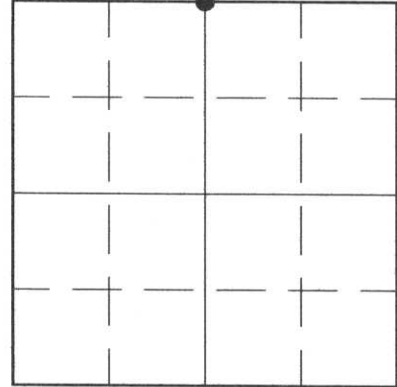
51-11
INDEX NO.

U.S. PUBLIC LAND SURVEY MONUMENT RECORD

HISTORY OF ORIGINAL CORNER ESTABLISHMENT AND SUBSEQUENT RESTORATION AND DESCRIPTION OF ANY RECORD, MONUMENT OCCUPATIONAL, TESTIMONIAL OR OTHER EVIDENCE CONSIDERED:

THIS CORNER WAS SET BY ACCEPTING FOUND TIES.

● = LOCATION OF CORNER



SECTION 34

TOWNSHIP 32 NORTH, RANGE 4 EAST

TOWN OF CORNING(CENTRAL)

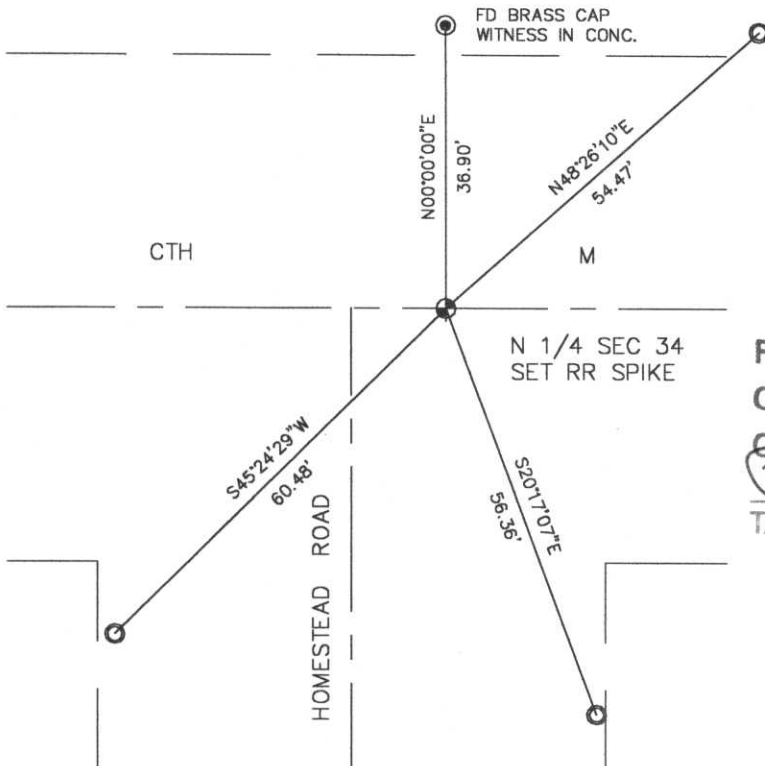
LINCOLN COUNTY, WISCONSIN

CORNER WAS: (CHECK ALL THAT APPLY)

- RESTORED THROUGH ACCEPTANCE OF AN OBLITERATED EVIDENCE LOCATION
- RESTORED THROUGH ACCEPTANCE OF A FOUND PERPETUATED LOCATION
- CONSIDERED A LOST CORNER AND REESTABLISHED THROUGH LOST CORNER PROPORTIONATE METHODS (INCLUDE A PLAN VIEW DRAWING SHOWING DISTANCES AND DIRECTIONS TO OTHER PUBLIC LAND SURVEY CORNERS USED FOR PROPORTIONING AND DETERMINING THE CORNER LOCATION)
- RESTORED OR REESTABLISHED IN A LOCATION THAT DIFFERS FROM A PREVIOUS RESTORATION OR REESTABLISHMENT (INCLUDE A PLAN VIEW DRAWING AND INDICATE WHAT WAS SET AND/OR FOUND)
- CHECK IF THERE IS ADDITIONAL INFORMATION ON BACK

DESCRIBE THE MONUMENT AND ACCESSORIES USED TO PERPETUATE THE LOCATION OF THE CORNER. (INCLUDE A PLAN VIEW DRAWING AND INDICATE WHAT WAS SET AND/OR FOUND) ALSO INCLUDE FOUR TIES TO THE SECTION CORNER AND DESCRIPTION OF THE TIES.

FD LINCOLN COUNTY
WITNESS CORNERS AT ALL TIES



RECEIVED AT LINCOLN COUNTY
COURTHOUSE THIS 26 DAY
OF NOV 1997
Pat Reiler
TAX DESCRIPTION OFFICE

DANIEL E. HIGGINBOTHAM

(type or print name) CERTIFY THAT THE CORNER LOCATION SHOWN ON THIS RECORD WAS DETERMINED BY ME OR UNDER MY DIRECTION AND CONTROL AND THAT THIS U.S. PUBLIC LAND SURVEY MONUMENT RECORD IS CORRECT AND COMPLETE TO THE BEST OF MY KNOWLEDGE AND BELIEF.

Daniel Higginbotham
SIGNATURE

11/25/97
DATE



INDEX NO. U-15

U.S. PUBLIC LAND SURVEY MONUMENT RECORD

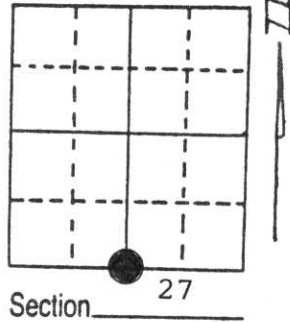
Note: This form is intended and designed to fulfill all requirements of Wisconsin Administrative Code, Chapter A-E 5.02, U.S. Public Land Survey Monument Record (3) (a) (b) (c) (d) (e) (f) (g) (h) (i). An additional sheet may be added if necessary to conform with said requirements.

(a) Corner location: Township 32 North

Range 4 East

Town/City/Village TN OF CORNING

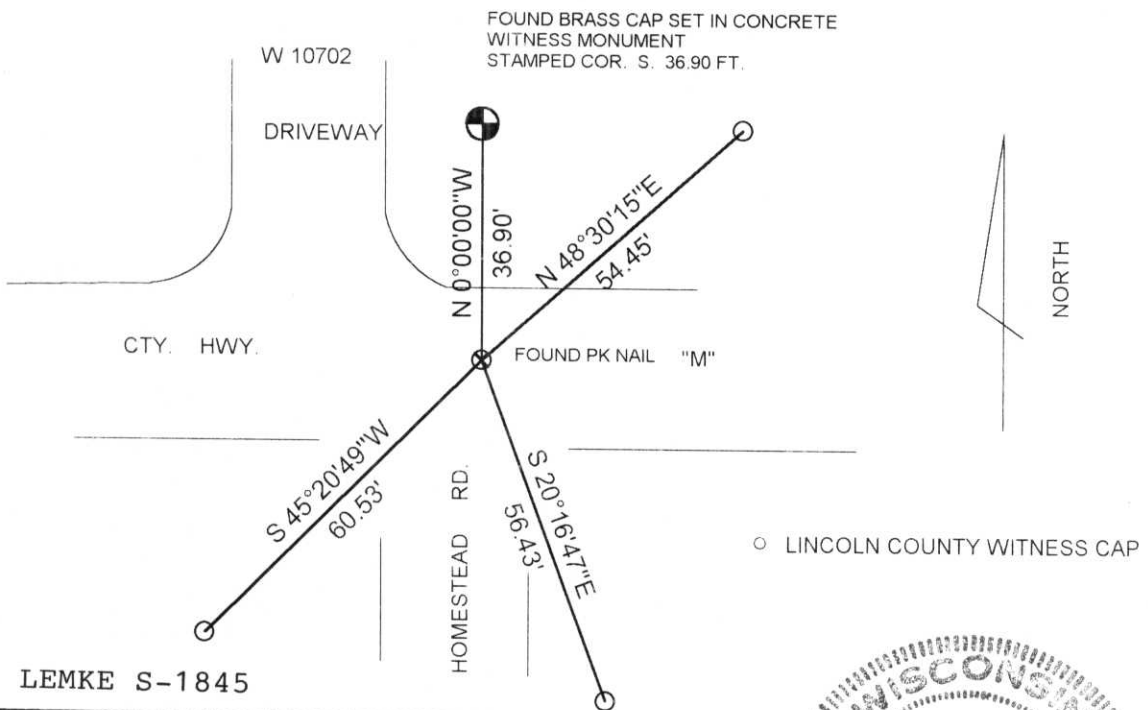
County LINCOLN



(b) (f) (g) (h) Description of monument found at this corner and if it was accepted, state all evidence (material, testimonial, occupational, plats, records, other monuments) used as a basis for accepting. If not accepted or if nothing was found, state evidence used as basis for establishing location. If reestablished through lost corner proportionate methods, indicate all monuments, distances and directions used to establish.

FOUND BRASS CAP SET IN CONCRETE SHOWING CORNER POSITION TO BE SOUTH 36.90 FEET. EXCAVED HIGHWAY AT THAT POSITION IN THE LATE FALL OF 1997 FOUND NO EVIDENCE OF CORNER. FOUND PK NAIL WAS SET FOR A SURVEY IN THE AREA IN THE WINTER OF 1998.

(c) (d) (e) Plan view of corner with ties to at least 4 witness monuments. If in disagreement with previously established corner, show the distances between the two corners and also indicate the ties to the disputed corner.



RECEIVED AT LINCOLN COUNTY COURTHOUSE THIS 24th DAY OF April 1998
Pat Pruebe
 TAX DESCRIPTION OFFICE

(i) I, DAVID L. LEMKE S-1845
 (type or print name) certify that the corner location on this record was determined by me or under my direction and control and that this U.S. Public Land Survey Monument Record is correct and complete to the best of my knowledge and belief.

Signature

MAR. 30 1998

Date



Index No. U-15