

# U.S. PUBLIC LAND SURVEY MONUMENT RECORD

NOTE: THIS FORM IS INTENDED AND DESIGNED TO FULFILL ALL REQUIREMENTS OF WISCONSIN ADMINISTRATIVE CODE, CHAPTER LAND SURVEY MONUMENT RECORD (3) (a) (b) (c) (d) (e) (f) (g) (h) (i). AN ADDITIONAL SHEET MAY BE ADDED IF NECESSARY TO CONFORM WITH SAID REQUIREMENTS. A-E 7.08 U.S. PUBLIC

(a) CORNER LOCATION: TOWNSHIP 32 NORTH  
 RANGE 4 EAST/~~WEST~~  
 TOWN/~~CITY/VILLAGE~~ CORNING  
 COUNTY LINCOLN



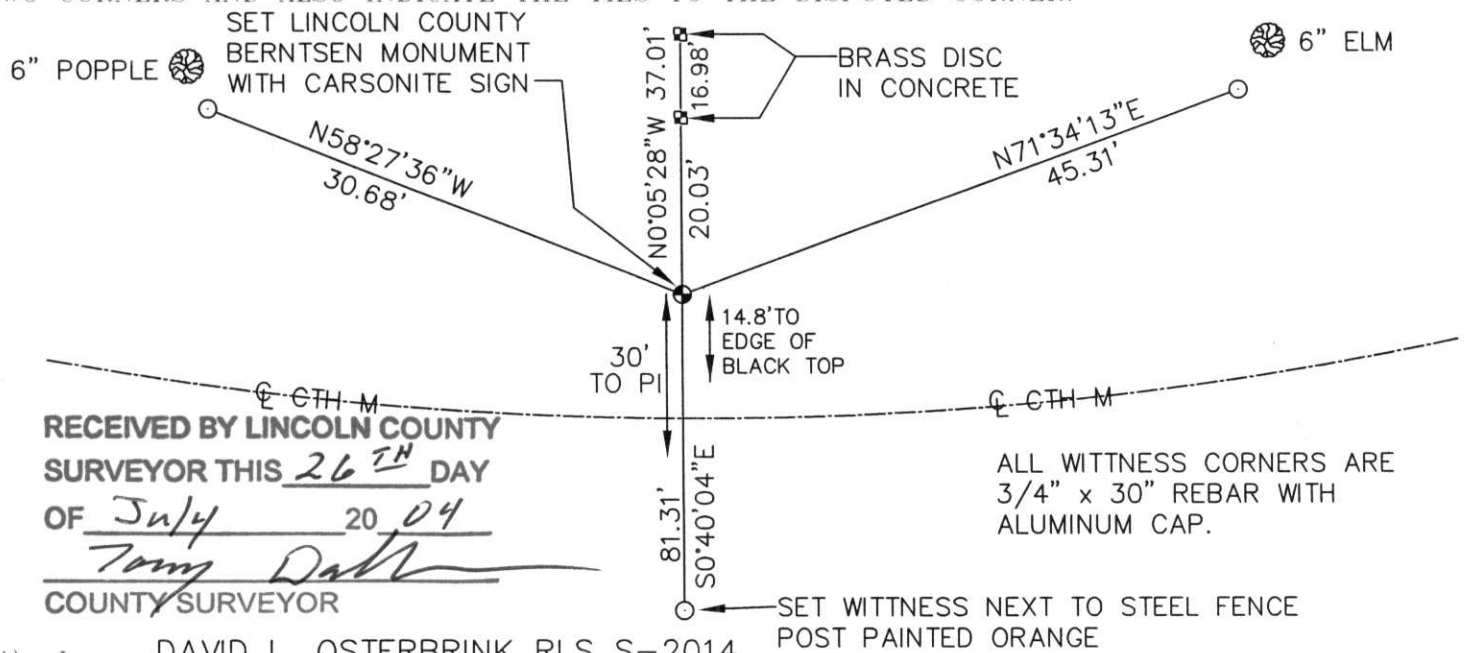
SECTION 34

(b) (f) (g) (h) DESCRIPTION OF MONUMENT FOUND AT THIS CORNER AND IF IT WAS ACCEPTED. STATE ALL EVIDENCE (MATERIAL, TESTIMONIAL, OCCUPATIONAL, PLATS, RECORDS, OTHER MONUMENTS) USED AS BASIS FOR ACCEPTING. IF NOT ACCEPTED OR IF NOTHING WAS FOUND, STATE EVIDENCE USED AS BASIS FOR ESTABLISHING LOCATION. IF REESTABLISHED THROUGH LOST CORNER PROPORTIONATE METHODS, INDICATE ALL MONUMENTS, DISTANCES AND DIRECTIONS USED TO ESTABLISH. INDICATE TYPE OF MONUMENT FOUND OR SET AND SIGN POST.

THIS CORNER HAD BEEN DUG FOR BY LEMKE, BUT THEY FOUND NOTHING. I SET THIS CORNER TO SEE HOW IT MATCHED WITH THE W 1/4 CORNER LOCATION.

LOCAL RESIDENT, BRUCE BORCHARDT, SAID THAT HIS DAD TOLD HIM THAT OLD HWY M WAS BUILT SOUTH OF THE SECTION LINE, BECAUSE OF A LOGGING CAMP OR LANDING. THE HWY M ROAD PLANS, SHOW SECTION CORNER BEING 30' LEFT OF PI. IN THE WOODS TO THE NORTH, ARE TWO BRASS DISCS IN CONCRETE. I HELD THEM FOR LINE, AND WENT 30' NORTH OF THE PI. CORNER FALLS IN DITCH. SET LINCOLN COUNTY BERNTSEN MONUMENT WITH CARSONITE SIGN, TIED OUT.

(c) (d) (e) PLAN VIEW OF CORNER WITH TIES TO AT LEAST 4 WITNESS MONUMENTS. IF IN DISAGREEMENT WITH PREVIOUSLY ESTABLISHED CORNER, SHOW THE DISTANCES BETWEEN THE TWO CORNERS AND ALSO INDICATE THE TIES TO THE DISPUTED CORNER.



RECEIVED BY LINCOLN COUNTY  
 SURVEYOR THIS 26<sup>TH</sup> DAY  
 OF July 2004  
*Tommy Dahl*  
 COUNTY SURVEYOR

ALL WITNESS CORNERS ARE  
 3/4" x 30" REBAR WITH  
 ALUMINUM CAP.

(i) I, DAVID L. OSTERBRINK RLS S-2014  
 (TYPE OR PRINT NAME) CERTIFY THAT THE CORNER  
 LOCATION ON THIS RECORD WAS DETERMINED BY ME  
 OR UNDER MY DIRECTION AND CONTROL AND THAT  
 THIS U.S. PUBLIC LAND SURVEY MONUMENT RECORD  
 IS CORRECT AND COMPLETE TO THE BEST OF MY  
 KNOWLEDGE AND BELIEF

*David L. Osterbrink*  
 SIGNATURE

7-25-04  
 DATE



INDEX NO. U-13

# U.S. PUBLIC LAND SURVEY MONUMENT RECORD

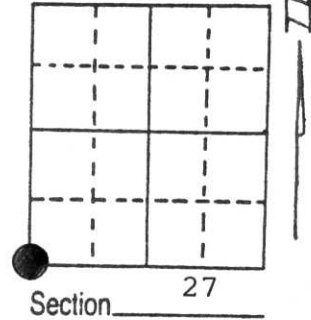
Note: This form is intended and designed to fulfill all requirements of Wisconsin Administrative Code, Chapter A-E 5.02, U.S. Public Land Survey Monument Record (3) (a) (b) (c) (d) (e) (f) (g) (h) (i). An additional sheet may be added if necessary to conform with said requirements.

(a) Corner location: Township 32 North

Range 4 East

Town/City/Village TN OF CORNING

County LINCOLN



(b) (f) (g) (h) Description of monument found at this corner and if it was accepted, state all evidence (material, testimonial, occupational, plats, records, other monuments) used as a basis for accepting. If not accepted or if nothing was found, state evidence used as basis for establishing location. If reestablished through lost corner proportionate methods, indicate all monuments, distances and directions used to establish.

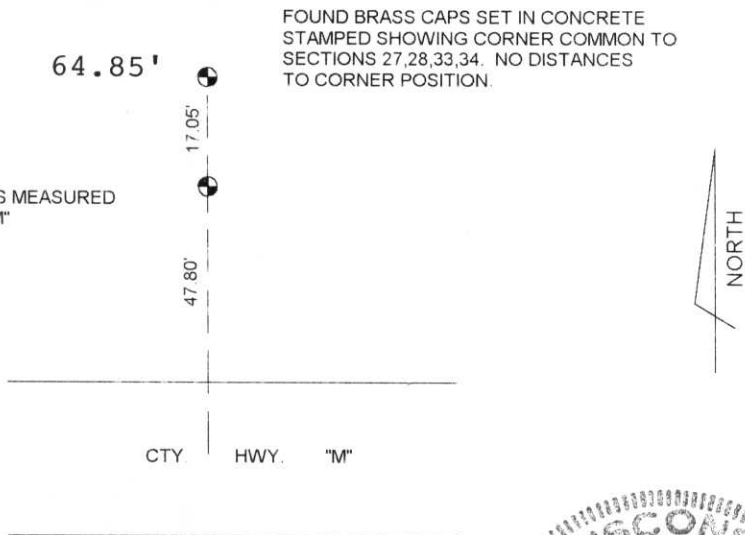
EXCAVATED LARGE SECTION OF HIGHWAY FOUND NO EVIDENCE OF CORNER

WIDOT R/W PLAT PROJECT S0693(6) CALLS FOR THE CORNER TO BE 30' SOUTH OF A OFFSET.

(c) (d) (e) Plan view of corner with ties to at least 4 witness monuments. If in disagreement with previously established corner, show the distances between the two corners and also indicate the ties to the disputed corner.

RECEIVED AT LINCOLN COUNTY  
 COURTHOUSE THIS 7th DAY  
 OF April 19 98  
 At Probe  
 TAX DESCRIPTION OFFICE

THESE DISTANCES MEASURED FROM C/L HWY. "M"



FOUND BRASS CAPS SET IN CONCRETE STAMPED SHOWING CORNER COMMON TO SECTIONS 27,28,33,34. NO DISTANCES TO CORNER POSITION.

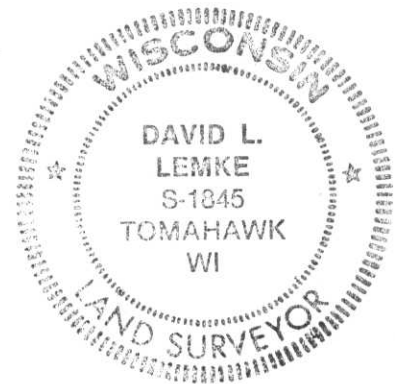
DAVID L. LEMKE S-1845

(i) I, \_\_\_\_\_  
 (type or print name) certify that the corner location on this record was determined by me or under my direction and control and that this U.S. Public Land Survey Monument Record is correct and complete to the best of my knowledge and belief.

MAR. 30 1998

Signature \_\_\_\_\_

Date \_\_\_\_\_



Index No. U-13