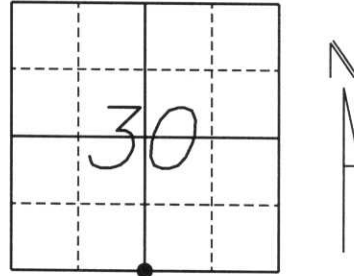


# U.S. PUBLIC LAND SURVEY MONUMENT RECORD

Note: This form is intended and designed to fulfill all requirements of Wisconsin Administrative Code, Chapter A-E 5.02, U.S. Public Land Survey Monument Record (3) (a) (b) (c) (d) (e) (f) (g) (h) (i). An additional sheet may be added if necessary to conform with said requirements.

(a) Corner location: Township 32 North  
 Range 4 East  
 Town/City/Village CORNING  
 County Lincoln



Section 30

(b) (f) (g) (h) Description of monument found at this corner and if it was accepted, state all evidence (material, testimonial, occupational, plats, records, other monuments) used as a basis for accepting. If not accepted or if nothing was found, state evidence used as a basis for establishing location. If reestablished through lost corner proportionate methods, indicate all monuments, distances and directions used to establish.

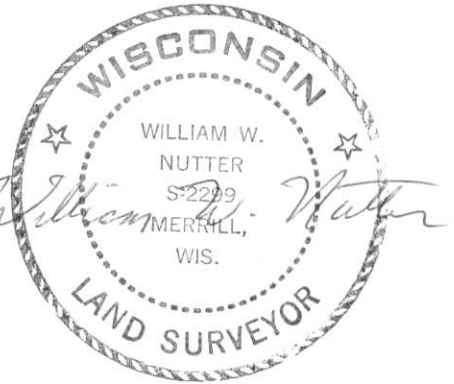
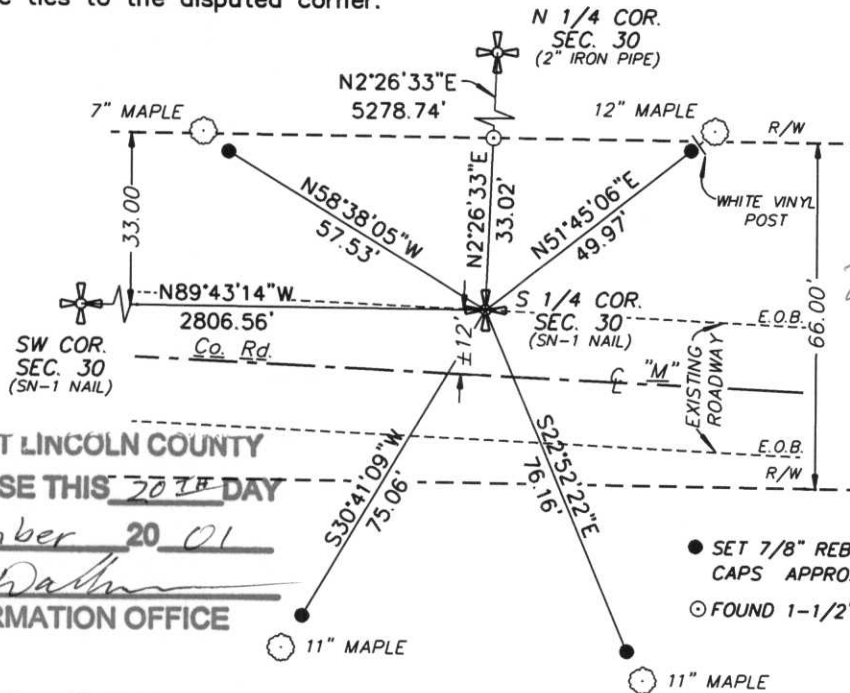
*Original survey done by William Daugherty in 1862. Set wood post with bearing trees:  
 9" Sugar Maple N85°E, 14 lks.  
 10" Birch S53°W, 30 lks.*

*Revisited by William Stuth in March, 1975. Survey done for Owens-Illinois with Section Summary done. Iron pipe in corner position, (did not state whether it was found or set.)*

*Revisited again in March, 1998 by David Lemke. Found no evidence above or below the surface.*

*Found a 1-1/2" iron pipe along the Northerly right-of-way line of Co. Rd. "M". Connected North 1/4 corner with found iron pipe and extended the line 33.00 feet to the south. checked distances with survey done by Stuth. Distances were consistent. Set SN-1 nail for corner with (4) 7/8" rebars with Lincoln County caps as witness monuments approx. 2 feet from bearing trees.*

(c) (d) (e) Plan view of corner with ties to at least 4 witness monuments. If in disagreement with previously established corner, show the distances between the two corners and also indicate the ties to the disputed corner.



RECEIVED AT LINCOLN COUNTY  
 COURTHOUSE THIS 30TH DAY  
 OF December 20 01  
*Tommy Dalton*  
 LAND INFORMATION OFFICE

- SET 7/8" REBARS WITH LINCOLN COUNTY CAPS APPROX. 2 FEET FROM BEARING TREES
- FOUND 1-1/2" (I.D.) IRON PIPE

(i) I, William W. Nutter RLS, S-2299  
 (type or print name) certify that the corner location on this record was determined by me or under my direction and control and that this U.S. Public Land Survey Monument Record is correct and complete to the best of my knowledge and belief.

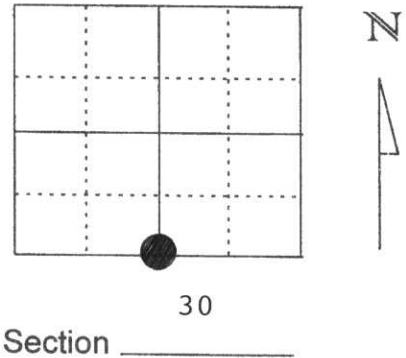
William W. Nutter, RLS S-2299 12-19-01  
 Signature Date

Index No. U-3

# U.S. PUBLIC LAND SURVEY MONUMENT RECORD

Note: This form is intended and designed to fulfill all requirements of Wisconsin Administrative Code, Chapter A-E 5.02, U.S. Public Land Survey Monument Record (3) (a) (b) (c) (d) (e) (f) (g) (h) (l). An additional sheet may be added if necessary to conform with said requirements.

(a) Corner location: Township 32 North  
Range 4 East  
Town/City/Village TN. OF CORNING  
County Lincoln



(b) (f) (g) (h) Description of monument found at this corner and if it was accepted, state all evidence (material, testimonial, occupational, plats, records, other monuments) used as a basis for accepting. If not accepted or if nothing was found, state evidence used as basis for establishing location. If reestablished through lost corner proportionate methods, indicate all monuments, distances and directions used to establish.

TIE SHEET AND SECTION SUMMARY BY BILL STUTH DATED 3/24/75 .  
SHOWS CORNER POSITION BUT NO SET.  
FOUND NO EVIDENCE OF CORNER ABOVE OR BELOW GROUND.

(c) (d) (e) Plan view of corner with ties to at least 4 witness monuments. If in disagreement with previously established corner, show the distances between the two corners and also indicate the ties to the disputed corner.

RECEIVED AT LINCOLN COUNTY  
COURTHOUSE THIS 26th DAY  
OF April 19 98  
Pat Priebe  
TAX DESCRIPTION OFFICE



DAVID L. LEMKE S-1845

(l) I, \_\_\_\_\_  
(type or print name) certify that the corner location on this record was determined by me or under my direction and control and that this U.S. Public Land Survey Monument Record is correct and complete to the best of my knowledge and belief.

MAR. 30 1998

Signature

Date

Index No. 4-3