

# LINCOLN COUNTY U.S. PUBLIC LAND TIE SHEET RECORD

SECTION 27  
TOWNSHIP 32N  
RANGE 4 E

273244  
NO.

**CORNING**  
CITY, VILLAGE, TOWN

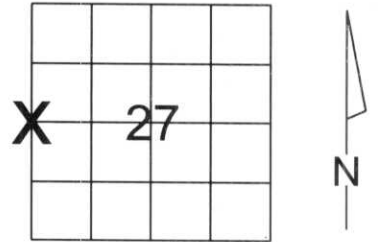
LANDMARK

CORNER INDENTITY: BERNSTEN MONUMENT

LINCOLN COUNTY COORDINATE: N: 140564.255  
E: 316908.455

DATE OF SURVEY: October 17, 2007  
SURVEY PARTY: Eron/Nieds

FOUND   
SET   
RE-SET   
RE-TIED



Description of monument found at this corner and if was accepted, state all evidence (material, testimonial, occupational, plats, records, other monuments) used as a basis for accepting. If not accepted or if nothing was found, state evidence used as basis for establishing location. If reestablished through lost corner proportionate methods, indicate all monuments, distances and directions used to establish.

## BASIS FOR MONUMENT LOCATION:

(DESCRIBE METHOD OF SURVEY AND CORNER AUTHENTICATION)  
Found Lincoln County Bernsten Monument at Corner. Based on conversations with landowners regarding the history of the corner, the location of the Lincoln County Bernsten Monument was held.



**CWE, Inc.**

5707 SCHOFIELD AVE.  
WESTON, WISCONSIN  
54476

PHONE: (715) 359-9400  
FAX: (715) 355-4199

general@cwengineers.com  
www.cwengineers.com

CERTIFIED CORRECT:

*Ronald Jacobson*

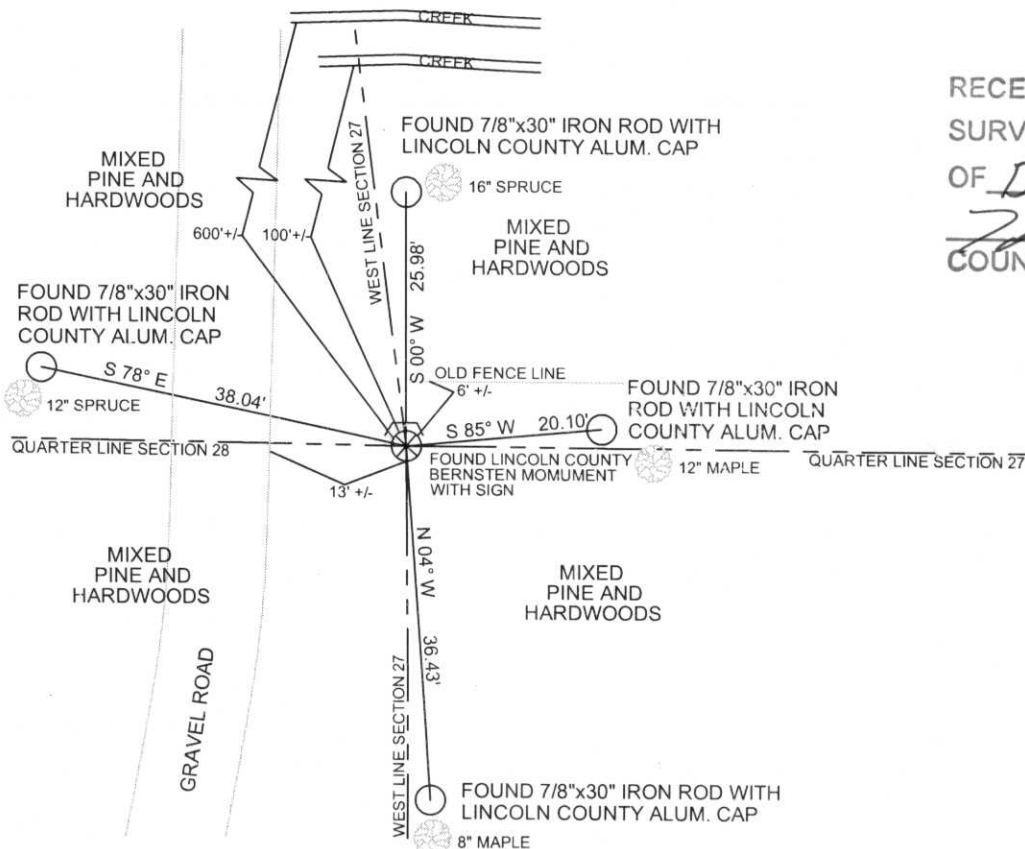
Ronald Jacobson RLS 2059-008

Registered Land Surveyor

DATE: November 29, 2007

## TIE SKETCH:

SHOW MINIMUM OF FOUR (4) HORIZONTAL TIE DISTANCES TO FIXED WITNESS MONUMENTS.  
DESCRIBE ALL MONUMENTS FOUND OR SET. ALL DISTANCES SHOWN IN US SURVEY FEET.



RECEIVED BY LINCOLN COUNTY  
SURVEYOR THIS 3<sup>RD</sup> DAY  
OF December 20 07  
*James Dahl*  
COUNTY SURVEYOR

COORDINATES ARE REFERENCED TO LINCOLN COUNTY COORDINATE SYSTEM AS DEVELOPED BY THE WI. DEPARTMENT OF TRANSPORTATION AND ARE BASED ON GPS OBSERVATIONS TO CONTROL POINTS AS SUPPLIED BY LINCOLN COUNTY.



NOT TO SCALE  
BEARINGS REFERENCED TO MAGNETIC NORTH





WITNESS POST  
PLEASE DO  
NOT DISTURB









U  
R  
V  
E  
Y

A  
R  
K  
E  
R

U  
R  
V  
E  
Y

A  
R  
K  
E  
R

IF THE LOCATION  
OF THIS MARKER  
IS ENDANGERED  
PLEASE CONTACT  
COUNTY  
SURVEYORS  
OFFICE











