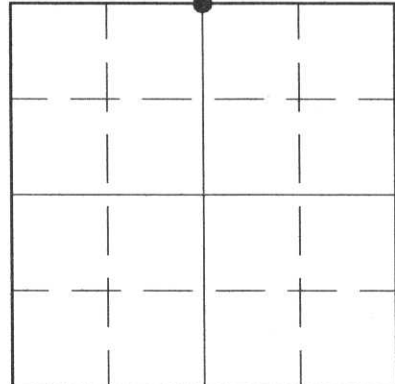


U.S. PUBLIC LAND SURVEY MONUMENT RECORD

HISTORY OF ORIGINAL CORNER ESTABLISHMENT AND SUBSEQUENT RESTORATION AND DESCRIPTION OF ANY RECORD, MONUMENT OCCUPATIONAL, TESTIMONIAL OR OTHER EVIDENCE CONSIDERED:

THIS CORNER WAS SET ON LINE BETWEEN THE FOUND NORTHEAST CORNER OF SECTION 25 AND THE DOUBLE PROPORTION LOCATION OF THE NORTHWEST CORNER OF SECTION 25. VARIOUS RESIDENT WITNESSES CLAIMED THAT THE EXTENSION NORTH OF WEGNER ROAD WAS PLACED ON THE INTERIOR 40 LINE. USING THAT AS THE BEST EAST-WEST EVIDENCE I DOUBLED THE DISTANCE FROM THE NORTHEAST CORNER OF SECTION 25 TO THE SET NORTH 1/4 OF SECTION 25.

● = LOCATION OF CORNER



SECTION 25

TOWNSHIP 32 NORTH, RANGE 04 EAST

TOWN OF CORNING(CENTRAL)

LINCOLN COUNTY, WISCONSIN

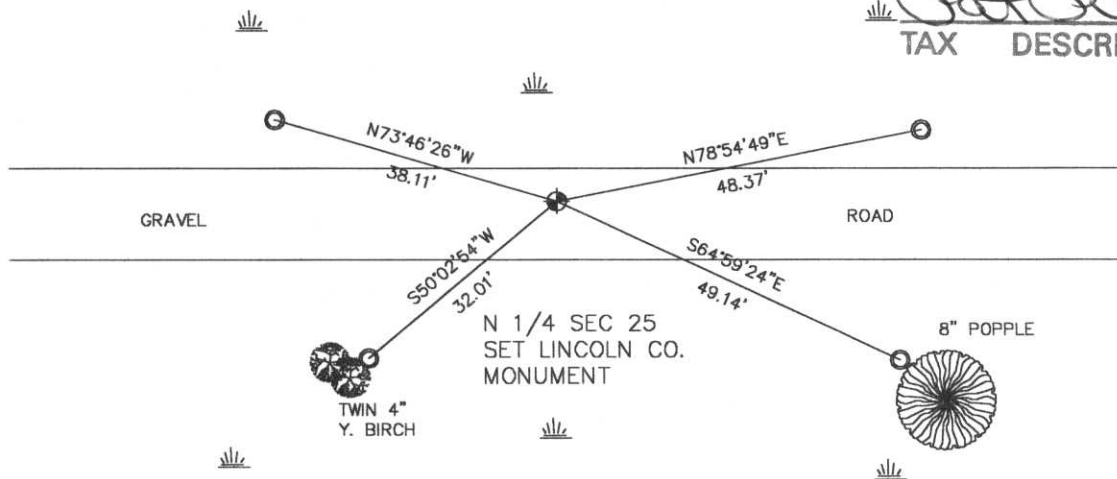
CORNER WAS: (CHECK ALL THAT APPLY)

- RESTORED THROUGH ACCEPTANCE OF AN OBLITERATED EVIDENCE LOCATION
- RESTORED THROUGH ACCEPTANCE OF A FOUND PERPETUATED LOCATION
- CONSIDERED A LOST CORNER AND REESTABLISHED THROUGH LOST CORNER PROPORTIONATE METHODS (INCLUDE A PLAN VIEW DRAWING SHOWING DISTANCES AND DIRECTIONS TO OTHER PUBLIC LAND SURVEY CORNERS USED FOR PROPORTIONING AND DETERMINING THE CORNER LOCATION)
- RESTORED OR REESTABLISHED IN A LOCATION THAT DIFFERS FROM A PREVIOUS RESTORATION OR REESTABLISHMENT (INCLUDE A PLAN VIEW DRAWING AND INDICATE WHAT WAS SET AND/OR FOUND)
- CHECK IF THERE IS ADDITIONAL INFORMATION ON BACK

DESCRIBE THE MONUMENT AND ACCESSORIES USED TO PERPETUATE THE LOCATION OF THE CORNER. (INCLUDE A PLAN VIEW DRAWING AND INDICATE WHAT WAS SET AND/OR FOUND) ALSO INCLUDE FOUR TIES TO THE SECTION CORNER AND DESCRIPTION OF THE TIES.

SET LINCOLN COUNTY
WITNESS CORNERS AT ALL TIES

RECEIVED AT LINCOLN COUNTY
COURTHOUSE THIS 26 DAY
OF NOV 1997.
Pat Quirk
TAX DESCRIPTION OFFICE

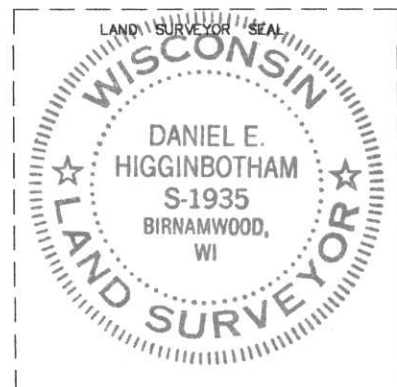


DANIEL E. HIGGINBOTHAM

(type or print name) CERTIFY THAT THE CORNER LOCATION SHOWN ON THIS RECORD WAS DETERMINED BY ME OR UNDER MY DIRECTION AND CONTROL AND THAT THIS U.S. PUBLIC LAND SURVEY MONUMENT RECORD IS CORRECT AND COMPLETE TO THE BEST OF MY KNOWLEDGE AND BELIEF.

Dan Higginbotham
SIGNATURE

11/25/97
DATE



INDEX NO. Q-23



13 11:25 AM



13 11:30 AM



13 11:28 AM