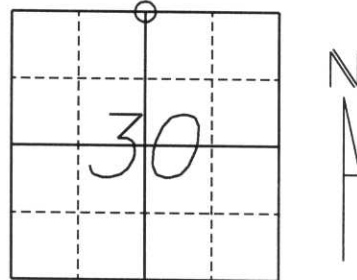


U.S. PUBLIC LAND SURVEY MONUMENT RECORD

Note: This form is intended and designed to fulfill all requirements of Wisconsin Administrative Code, Chapter A-E 5.02, U.S. Public Land Survey Monument Record (3) (a) (b) (c) (d) (e) (f) (g) (h) (l). An additional sheet may be added if necessary to conform with said requirements.

(a) Corner location: Township 32 North
 Range 4 East
 Town/City/Village Corning
 County Lincoln



Section 30

(b) (f) (g) (h) Description of monument found at this corner and if it was accepted, state all evidence (material, testimonial, occupational, plats, records, other monuments) used as a basis for accepting. If not accepted or if nothing was found, state evidence used as a basis for establishing location. If reestablished through lost corner proportionate methods, indicate all monuments, distances and directions used to establish.

Original survey done by William Daugherty in Jan., 1862. Set 1/4 post with bearing trees:
 7" Birch, N71°W, 22 lks.
 7" Birch, S79°E, 23 lks.

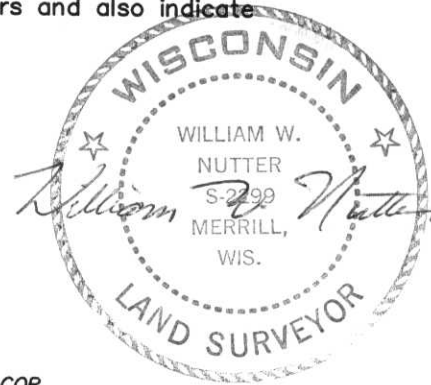
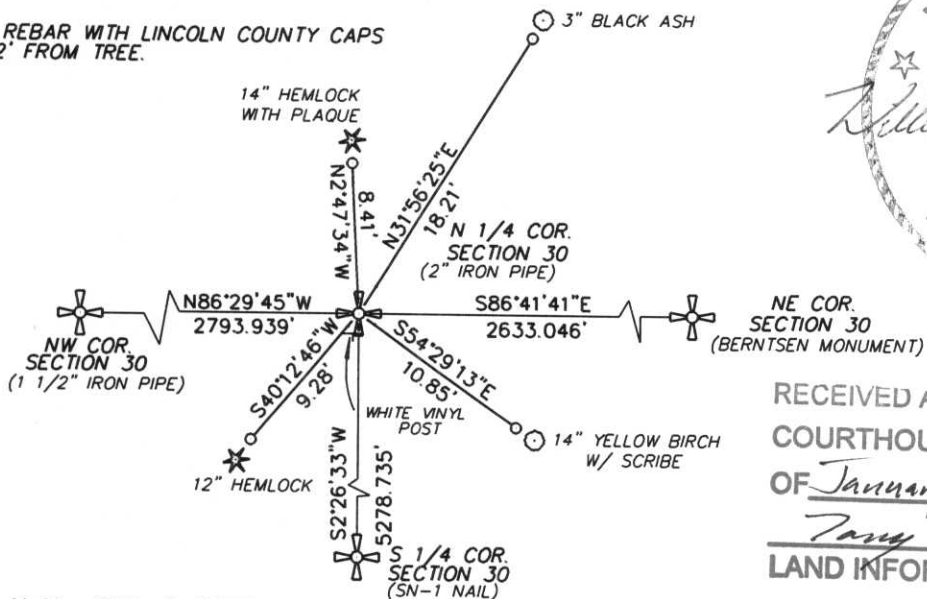
Visited in March, 1975 by William Stuth. Stuth shows an iron pipe. Doesn't state size or whether found or set. Bearing trees: 15" S. Maple, S67°W, 10'
 11" Y. Birch, S61°E, 14'

Found a 2" iron pipe and bearing trees: 14" Y. Birch, S54°29'13"E, ±12.85'
 19" Maple, S67°W (compass), ±9.87'

Set 7/8" rebar with Lincoln County caps approx. 2' from new bearing trees

(c) (d) (e) Plan view of corner with ties to at least 4 witness monuments. If in disagreement with previously established corner, show the distances between the two corners and also indicate the ties to the disputed corner.

○ SET 7/8" REBAR WITH LINCOLN COUNTY CAPS APPROX. 2' FROM TREE.



RECEIVED AT LINCOLN COUNTY COURTHOUSE THIS 9TH DAY OF January 20 02
Tony Dahn
 LAND INFORMATION OFFICE

(l) I, William W. Nutter RLS S-2299
 (type or print name) certify that the corner location on this record was determined by me or under my direction and control and that this U.S. Public Land Survey Monument Record is correct and complete to the best of my knowledge and belief.

William W. Nutter RLS S-2299 1-03-02
 Signature Date

Index No. 0-3





