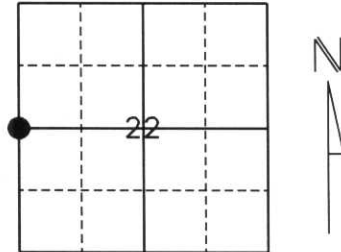


U.S. PUBLIC LAND SURVEY MONUMENT RECORD

Note: This form is intended and designed to fulfill all requirements of Wisconsin Administrative Code, Chapter A-E 5.02, U.S. Public Land Survey Monument Record (3) (a) (b) (c) (d) (e) (f) (g) (h) (i). An additional sheet may be added if necessary to conform with said requirements.

(a) Corner location: Township 32 North
 Range 4 East
 Town/City/Village Corning
 County Lincoln



Section 22

(b) (f) (g) (h) Description of monument found at this corner and if it was accepted, state all evidence (material, testimonial, occupational, plats, records, other monuments) used as a basis for accepting. If not accepted or if nothing was found, state evidence used as a basis for establishing location. If reestablished through lost corner proportionate methods, indicate all monuments, distance and directions used to establish.

History of original corner establishment:

Original Survey was January 30, 1862 by William E. Daugherty. Original corner was a wooden post with bearing trees:

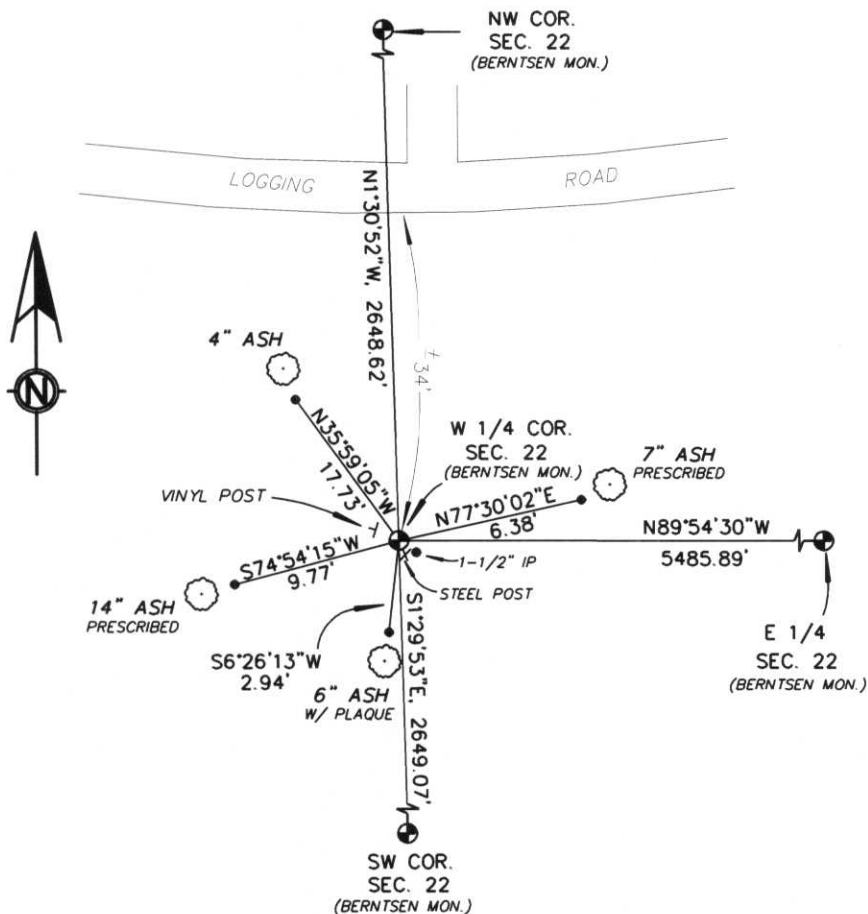
- 8" Hemlock N52°E, 6 lks.
- 9" Hemlock S38°W, 7lks.

1-1/2" Iron Pipe and steel post was placed by unknown person and time.

Description of corner evidence found:

We located the original squared Cedar post marked 1/4 S, S21 and S22, a 1-1/2" Iron Pipe, 1 foot directly East and a steel post, we accepted this position and replaced post with a Bernsten Monument and tied to 7/8" rebar with Lincoln County Caps.

(c) (d) (e) Plan view of corner with ties to at least 4 witness monuments. If in disagreement with previously established corner, show the distances between the two corners and also indicate the ties to the disputed corner.



* NOTE: Drawing is not to scale.

- All ties are to 7/8" Rebar with Lincoln County Caps approximately 2 feet from bearing trees.



(i) I, William W. Nutter RLS, S-2299
 (type or print name) certify that the corner location on this record was determined by me or under my direction and control and that this U.S. Public Land Survey Monument Record is correct and complete to the best of my knowledge and belief.

William W. Nutter, RLS.
 Signature

3-4-2003
 Date

Index No.

0-13





