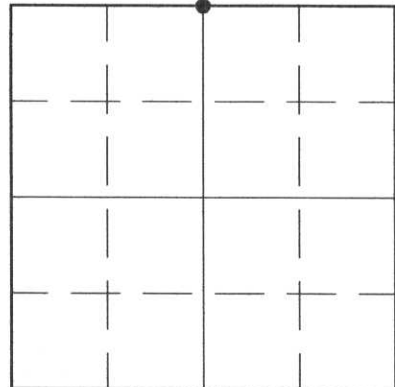


# U.S. PUBLIC LAND SURVEY MONUMENT RECORD

HISTORY OF ORIGINAL CORNER ESTABLISHMENT AND SUBSEQUENT RESTORATION AND DESCRIPTION OF ANY RECORD, MONUMENT OCCUPATIONAL, TESTIMONIAL OR OTHER EVIDENCE CONSIDERED:

DURING EXTENSIVE RESEARCH IN THIS AREA WE FOUND A LINCOLN COUNTY MONUMENT AT THIS LOCATION NO TIES REMAINED.

● = LOCATION OF CORNER



SECTION 23

TOWNSHIP 32 NORTH, RANGE 4 EAST

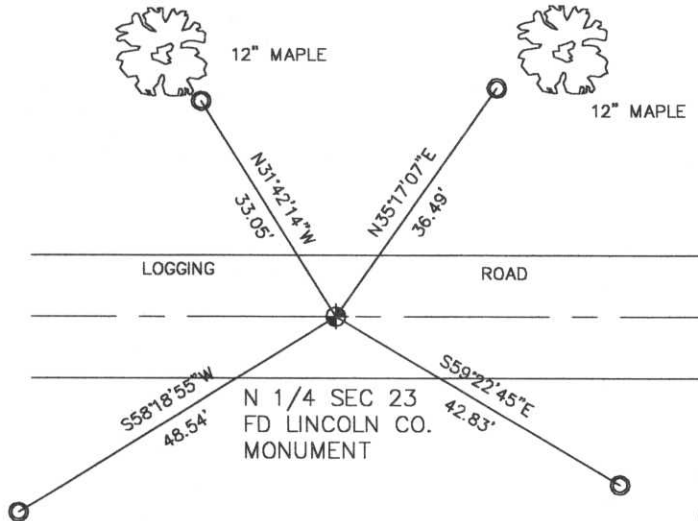
TOWN OF CORNING(CEN)

LINCOLN COUNTY, WISCONSIN

CORNER WAS: (CHECK ALL THAT APPLY)

- RESTORED THROUGH ACCEPTANCE OF AN OBLITERATED EVIDENCE LOCATION
- RESTORED THROUGH ACCEPTANCE OF A FOUND PERPETUATED LOCATION
- CONSIDERED A LOST CORNER AND REESTABLISHED THROUGH LOST CORNER PROPORTIONATE METHODS (INCLUDE A PLAN VIEW DRAWING SHOWING DISTANCES AND DIRECTIONS TO OTHER PUBLIC LAND SURVEY CORNERS USED FOR PROPORTIONING AND DETERMINING THE CORNER LOCATION)
- RESTORED OR REESTABLISHED IN A LOCATION THAT DIFFERS FROM A PREVIOUS RESTORATION OR REESTABLISHMENT (INCLUDE A PLAN VIEW DRAWING AND INDICATE WHAT WAS SET AND/OR FOUND)
- CHECK IF THERE IS ADDITIONAL INFORMATION ON BACK

DESCRIBE THE MONUMENT AND ACCESSORIES USED TO PERPETUATE THE LOCATION OF THE CORNER. (INCLUDE A PLAN VIEW DRAWING AND INDICATE WHAT WAS SET AND/OR FOUND) ALSO INCLUDE FOUR TIES TO THE SECTION CORNER AND DESCRIPTION OF THE TIES.



SET LINCOLN CO. WIT. CAPS AT ALL TIES

RECEIVED AT LINCOLN COUNTY COURTHOUSE THIS 26 DAY OF NOV 1997  
*Pat Reike*  
 TAX DESCRIPTION OFFICE

**DANIEL E. HIGGINBOTHAM**

(type or print name) CERTIFY THAT THE CORNER LOCATION SHOWN ON THIS RECORD WAS DETERMINED BY ME OR UNDER MY DIRECTION AND CONTROL AND THAT THIS U.S. PUBLIC LAND SURVEY MONUMENT RECORD IS CORRECT AND COMPLETE TO THE BEST OF MY KNOWLEDGE AND BELIEF.

*Daniel E. Higginbotham*  
 SIGNATURE

11/25/97  
 DATE



INDEX NO. M-19

CERTIFIED LAND CORNER RESTORATION

Index No. M-19

State of Wisconsin }  
County of LINCOLN } ss.

I WILLIAM F. KELLY, do hereby certify that on the 22nd day of JANUARY, 1975, I found evidence of the 1/4 CORNER corner of SECTIONS 14 & 23 Township 32, North, Range 4 EAST, Fourth, Principal Meridian, as described hereon; and that from this evidence I established a new monument and accessories as described hereon to perpetuate the original location of this corner.

Resident witnesses:

.....

.....

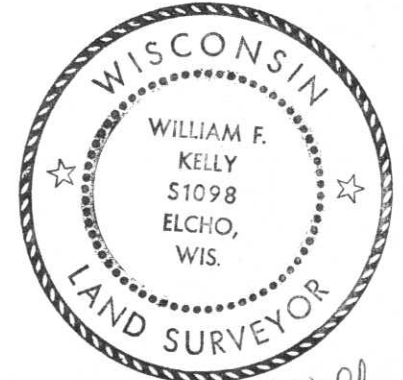
.....

History of original corner establishment:

CORNER ESTABLISHED ON SURVEY BY GENISOT & ASSOCIATES FOR OWENS-ILL. IN FEB. 1968.

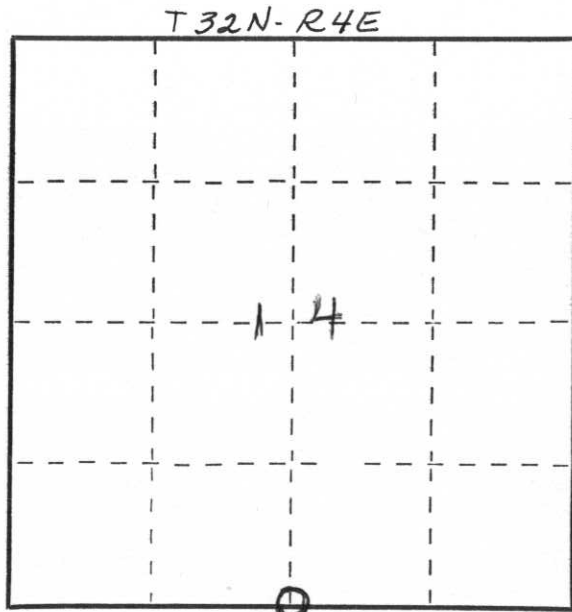
Description of corner evidence found:

FOUND SQUARED POST MARKED  $S_{14}$   $S_{23}$   $S_{1/4}$  AND  $1\frac{1}{4}$ " I.P.

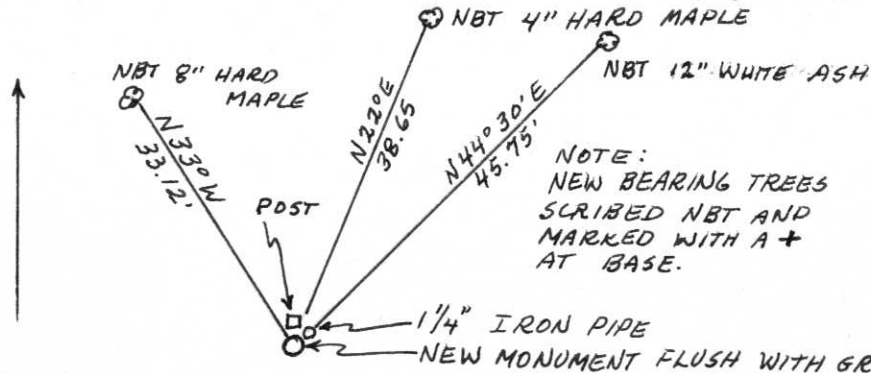


*William F. Kelly*

Description of monument and accessories I established to perpetuate the original location of this corner.



○ = Corner monument restored.



NOTE:  
NEW BEARING TREES  
SCRIBED NBT AND  
MARKED WITH A +  
AT BASE.

SET NEW MONUMENT  
AND RESET POST AND  
I.P. AS WITNESS MON.  
NEW MONUMENT MARKED:  $\nearrow$



Dated at ELCHO, Wis., this 22nd day of JANUARY, 1975

Signature William F. Kelly Title REGISTERED LAND SURVEYOR Registration No. 51098  
(County Surveyor, Registered Land Surveyor, or other duly authorized official)

Office of Register of Deeds, County of \_\_\_\_\_, I hereby certify that the within instrument was filed in this office for record on the \_\_\_\_\_ day of \_\_\_\_\_, 19\_\_\_\_ at \_\_\_\_\_ o'clock \_\_\_\_\_ M.

.....  
(Register of Deeds)

By \_\_\_\_\_ Deputy





