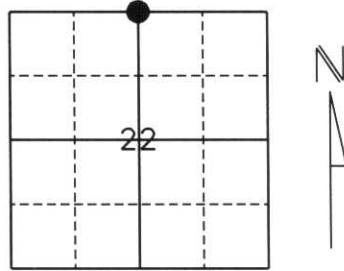


# U.S. PUBLIC LAND SURVEY MONUMENT RECORD

Note: This form is intended and designed to fulfill all requirements of Wisconsin Administrative Code, Chapter A-E 5.02, U.S. Public Land Survey Monument Record (3) (a) (b) (c) (d) (e) (f) (g) (h) (l). An additional sheet may be added if necessary to conform with said requirements.

(a) Corner location: Township 32 North  
 Range 4 East  
 Town/City/Village Corning  
 County Lincoln



Section 22

(b) (f) (g) (h) Description of monument found at this corner and if it was accepted, state all evidence (material, testimonial, occupational, plats, records, other monuments) used as a basis for accepting. If not accepted or if nothing was found, state evidence used as a basis for establishing location. If reestablished through lost corner proportionate methods, indicate all monuments, distance and directions used to establish.

*History of original corner establishment:*

Original Survey was January 30, 1862 by William E. Daugherty. Original corner was a wooden post with bearing trees:

- 7" Cedar N70°E, 17 lks.
- 8" Birch S36°W, 8 lks.

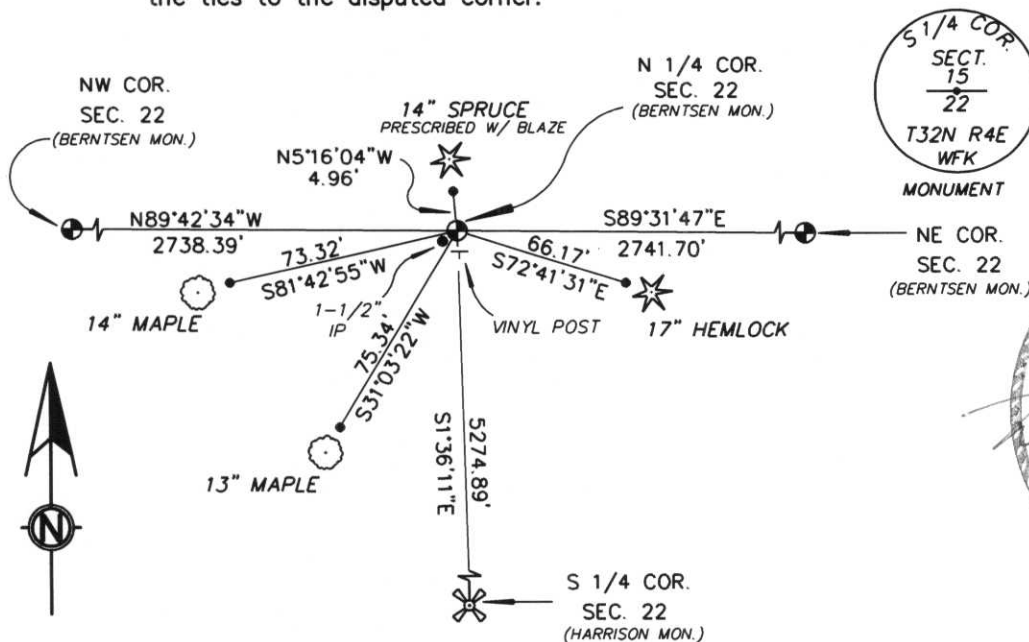
Corner was revisited by Genisot and Associates in February 1968 for Owens-Illinois. They set a squared Cedar post Marked 1/4, S22, S15 and a 1-1/4" Iron Pipe (Kelly) tied to bearing trees:

- Corner was revisited again by William Kelly January, 21 1975 where he set a new Lincoln County Monument and reset an Iron Pipe and post as witness Monuments and also tied to bearing trees:
- 8" Balsam N62°30'E, 18.80'
  - 6" Balsam N74°30'E, 16.30'
  - 14" Spruce N5°W, 7.60'

*Description of corner evidence found:*

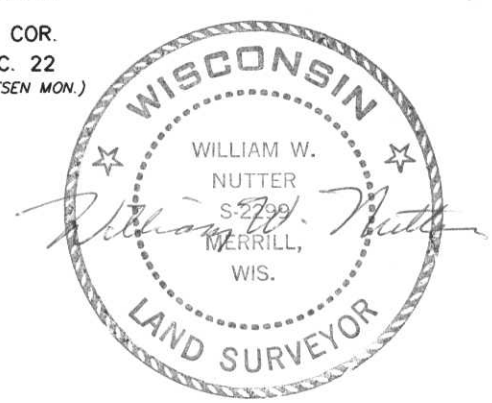
We located a Berntsen Monument laying on its side and a 1-1/2" Iron Pipe. We also found two of Kelly's bearing trees still standing and used them to reset the Monument. The smaller Balsam was down and the larger Balsam was standing but dead. The Spruce was in good condition and we used it as a bearing tree. We accepted this position and tied to 7/8" rebar with Lincoln County Caps. Corner falls in a Tag Alder, Balsam and Spruce swamp.

(c) (d) (e) Plan view of corner with ties to at least 4 witness monuments. If in disagreement with previously established corner, show the distances between the two corners and also indicate the ties to the disputed corner.



\* NOTE: Drawing is not to scale.

- All ties are to 7/8" Rebar with Lincoln County Caps approximately 2 feet from bearing trees.



(l) I, William W. Nutter RLS, S-2299  
 (type or print name) certify that the corner location on this record was determined by me or under my direction and control and that this U.S. Public Land Survey Monument Record is correct and complete to the best of my knowledge and belief.

revised 2/97

William W. Nutter, R.L.S.  
 Signature

3-4-2003  
 Date

Index No.

19-15

CERTIFIED LAND CORNER RESTORATION

Index No. M-15

State of Wisconsin }  
County of LINCOLN } ss.

I WILLIAM F. KELLY, do hereby certify that on the 21<sup>ST</sup> day of JANUARY, 1975, I found evidence of the SOUTH 1/4 corner of SECTIONS 15 & 22 Township 32, North, Range 4 EAST, Fourth, Principal Meridian, as described hereon; and that from this evidence I established a new monument and accessories as described hereon to perpetuate the original location of this corner.

Resident witnesses:

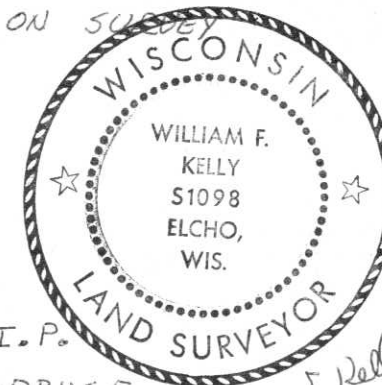
.....

.....

.....

History of original corner establishment:

CORNER SET BY GENISOT AND ASSOCIATES IN FEB. 1968 ON SURVEY FOR OWENS-ILLINOIS.



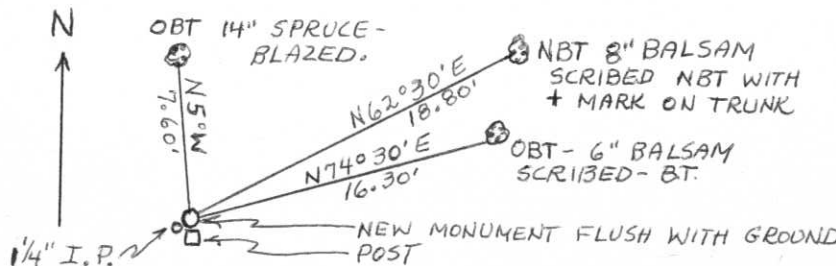
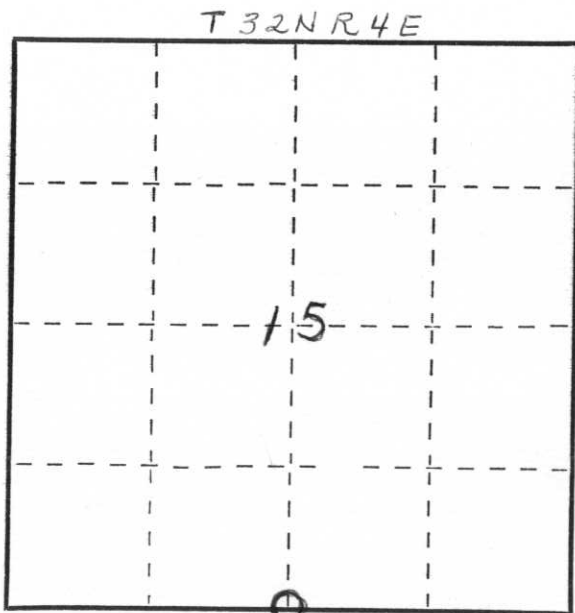
Description of corner evidence found:

LOCATED SQUARED POST MARKED 1/4 S 22 15 AND 1/4" I.P.  
THIS CORNER IS LOCATED IN A BALSAM AND SPRUCE AND TAG ELDER SWAMP

*William F. Kelly*

Description of monument and accessories I established to perpetuate the original location of this corner.

SET NEW MONUMENT AND RESET I.P. AND POST AS WITNESS MONUMENTS. NEW MONUMENT MARKED:



Dated at ELCHO, Wis., this 21<sup>ST</sup> day of JANUARY, 1975.

Signature William F. Kelly Title REGISTERED LAND SURVEYOR Registration No. 51098  
(County Surveyor, Registered Land Surveyor, or other duly authorized official)

Office of Register of Deeds, County of ....., I hereby certify that the within instrument was filed in this office for record on the ..... day of ....., 19..... at ..... o'clock ..... M..

.....  
(Register of Deeds)

By ..... Deputy

○ = Corner monument restored.



L KINGOLN GOVT DISTRICT  
THE STATE OF MASSACHUSETTS

COR  
S A SECT  
15  
22  
T 3 2 N R 4 E  
W F K



