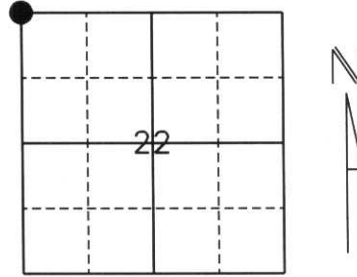


# U.S. PUBLIC LAND SURVEY MONUMENT RECORD

Note: This form is intended and designed to fulfill all requirements of Wisconsin Administrative Code, Chapter A-E 5.02, U.S. Public Land Survey Monument Record (3) (a) (b) (c) (d) (e) (f) (g) (h) (i). An additional sheet may be added if necessary to conform with said requirements.

(a) Corner location: Township 32 North  
 Range 4 East  
 Town/City/Village Corning  
 County Lincoln



Section 22

(b) (f) (g) (h) Description of monument found at this corner and if it was accepted, state all evidence (material, testimonial, occupational, plats, records, other monuments) used as a basis for accepting. If not accepted or if nothing was found, state evidence used as a basis for establishing location. If reestablished through lost corner proportionate methods, indicate all monuments, distance and directions used to establish.

**History of original corner establishment:**

Original Survey was January 30, 1862 by William E. Daugherty. Original corner was a wooden post with bearing trees:  
 8" White Pine N28°E, 26 lks.  
 9" White Pine S43°W, 16 lks.

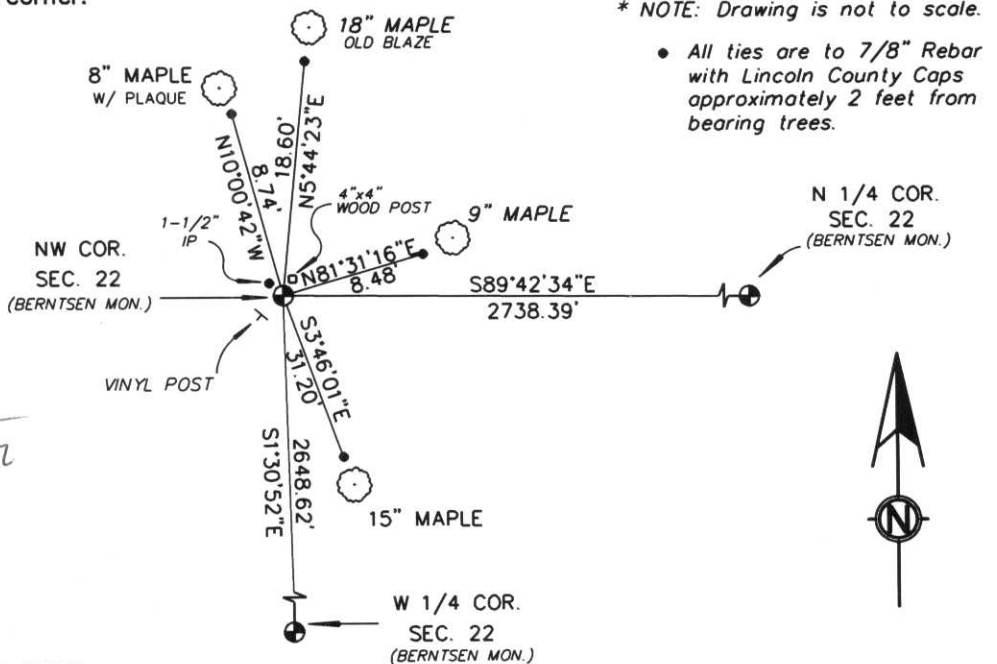
Corner was revisited by Genisot and Associates in February 1968 for Owens-Illinois. They set a squared post Marked S16, S15, S21 and S22 and a 1-1/4" Iron Pipe (Kelly).

Corner was revisited again by William Kelly January 22, 1975. He set a Berntsen Monument and reset post and a Iron Pipe (set by Genisot) as witness Monuments and tied to bearing trees:  
 10" Maple N5°30'E, 20.85'  
 8" Maple S0°00'E, 23.21'  
 8" Maple S65°W, 15.24'  
 16" Yellow Birch N52°W, 13.25'

**Description of corner evidence found:**

We located a squared post marked S16, S15, S21 and S22, a Berntsen Monument and a 1-1/2" Iron Pipe, we accepted this position and tied to 7/8" rebar with Lincoln County Caps.

(c) (d) (e) Plan view of corner with ties to at least 4 witness monuments. If in disagreement with previously established corner, show the distances between the two corners and also indicate the ties to the disputed corner.



(I) I, William W. Nutter RLS, S-2299  
 (type or print name) certify that the corner location on this record was determined by me or under my direction and control and that this U.S. Public Land Survey Monument Record is correct and complete to the best of my knowledge and belief.

William W. Nutter, RLS  
 Signature

3-4-2003  
 Date

Index No. M-13

CERTIFIED LAND CORNER RESTORATION

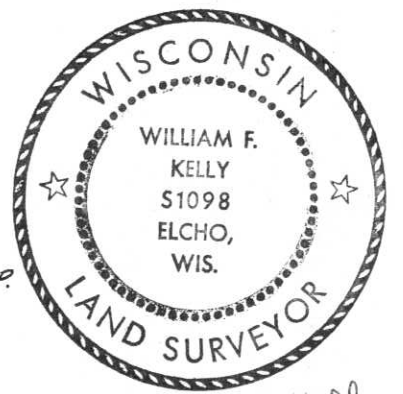
Index No. M-13

State of Wisconsin }  
County of LINCOLN } ss.

History of original corner establishment:  
CORNER ESTABLISHED ON SURVEY BY GENISOT & ASSOCIATES FOR OWENS-ILL.  
IN FEB. 1968.

I WILLIAM F. KELLY, do hereby certify that on the 22nd day of JANUARY, 1975, I found evidence of the SECTION corner of SECTIONS 16, 15, 21, & 22 Township 32, North, Range 4 EAST, Fourth, Principal Meridian, as described hereon; and that from this evidence I established a new monument and accessories as described hereon to perpetuate the original location of this corner.

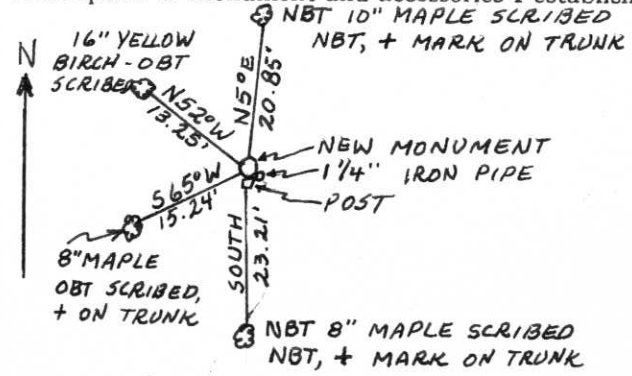
Description of corner evidence found:  
LOCATED SQUARED POST MARKED S 16 S 15 S 21 S 22 AND 1 1/4" I.P.



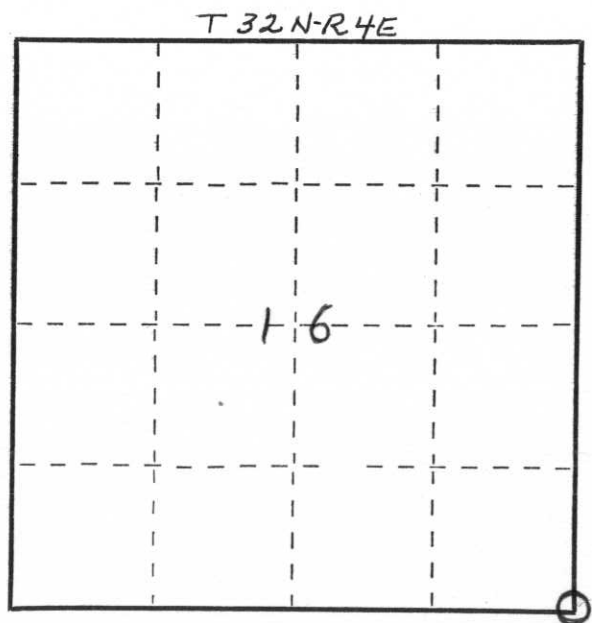
*William F. Kelly*

Resident witnesses:  
\_\_\_\_\_  
\_\_\_\_\_  
\_\_\_\_\_

Description of monument and accessories I established to perpetuate the original location of this corner.



SET NEW MONUMENT AND RESET POST AND I.P. AS WITNESS MON. MONUMENT MARKED:



○ = Corner monument restored.

Dated at ELCHO, Wis., this 22nd day of JANUARY, 1975

Signature William F. Kelly Title REGISTERED LAND SURVEYOR Registration No. 51098  
(County Surveyor, Registered Land Surveyor, or other duly authorized official)

Office of Register of Deeds, County of \_\_\_\_\_, I hereby certify that the within instrument was filed in this office for record on the \_\_\_\_\_ day of \_\_\_\_\_, 19\_\_\_\_ at \_\_\_\_\_ o'clock \_\_\_\_\_ M.

\_\_\_\_\_  
(Register of Deeds)

By \_\_\_\_\_ Deputy





