

LINCOLN COUNTY U.S. PUBLIC LAND TIE SHEET RECORD

SECTION 14
TOWNSHIP 32N
RANGE 4 E

143244
NO.

LANDMARK

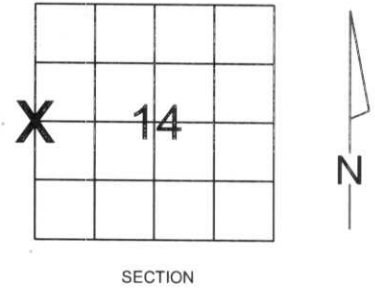
CORNING
CITY, VILLAGE, TOWN

CORNER INDENTITY: 1.5" IRON PIPE W/ WOOD POST

LINCOLN COUNTY COORDINATE: N: 151016.478
E: 322071.678

DATE OF SURVEY: October 25, 2007
SURVEY PARTY: Eron

FOUND
SET
RE-SET
RE-TIED



Description of monument found at this corner and if was accepted, state all evidence (material, testimonial, occupational, plats, records, other monuments) used as a basis for accepting. If not accepted or if nothing was found, state evidence used as basis for establishing location. If reestablished through lost corner proportionate methods, indicate all monuments, distances and directions used to establish.

BASIS FOR MONUMENT LOCATION:

(DESCRIBE METHOD OF SURVEY AND CORNER AUTHENTICATION)

Found 1.5" iron pipe and wood post at corner. Tag tree, and comparison to original notes supports the iron pipe and post as the corner.



CWE, Inc.

5707 SCHOFIELD AVE.
WESTON, WISCONSIN
54476

PHONE: (715) 359-9400
FAX: (715) 355-4199

general@cwengineers.com
www.cwengineers.com

RECEIVED BY LINCOLN COUNTY
SURVEYOR THIS 2ND DAY
OF November 20 07
Tom Dalko
COUNTY SURVEYOR

CERTIFIED CORRECT:

Ronald Jacobson

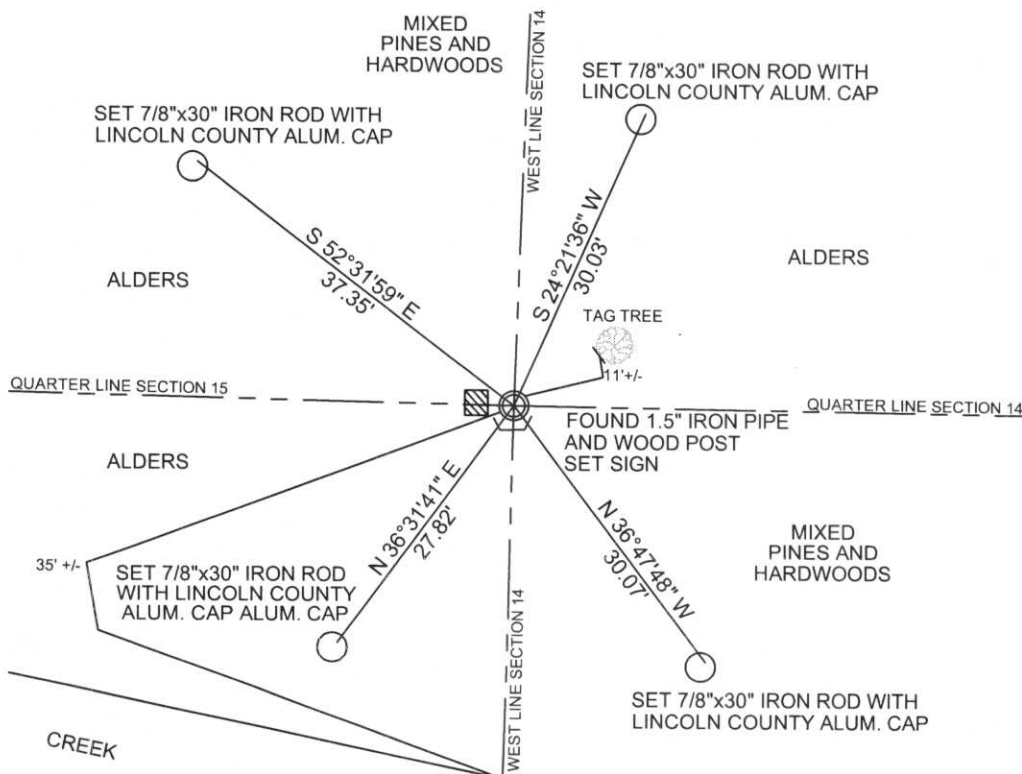
Ronald Jacobson RLS 2059-008

Registered Land Surveyor

DATE: November 2, 2007

TIE SKETCH:

SHOW MINIMUM OF FOUR (4) HORIZONTAL TIE DISTANCES TO FIXED WITNESS MONUMENTS.
DESCRIBE ALL MONUMENTS FOUND OR SET. ALL DISTANCES SHOWN IN US SURVEY FEET.



COORDINATES ARE REFERENCED TO LINCOLN COUNTY COORDINATE SYSTEM AS DEVELOPED BY THE WI. DEPARTMENT OF TRANSPORTATION AND ARE BASED ON GPS OBSERVATIONS TO CONTROL POINTS AS SUPPLIED BY LINCOLN COUNTY.

NOT TO SCALE
BEARINGS REFERENCED TO MAGNETIC NORTH









