

LINCOLN COUNTY U.S. PUBLIC LAND TIE SHEET RECORD

SECTION 18
TOWNSHIP 32N
RANGE 4 E

183244

LANDMARK

CORNING
CITY, VILLAGE, TOWN

NO.

CORNER INDENTITY: 2" IRON PIPE w/CAP

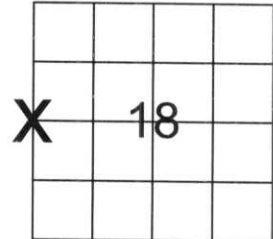
LINCOLN COUNTY COORDINATE: N: 151246.3800

E: 300467.6090

DATE OF SURVEY: February 20, 2007

SURVEY PARTY: Rutzen/Broton

FOUND
SET
RE-SET
RE-TIED



SECTION

Description of monument found at this corner and if was accepted, state all evidence (material, testimonial, occupational, plats, records, other monuments) used as a basis for accepting. If not accepted or if nothing was found, state evidence used as basis for establishing location. If reestablished through lost corner proportionate methods, indicate all monuments, distances and directions used to establish.

BASIS FOR MONUMENT LOCATION:

(DESCRIBE METHOD OF SURVEY AND CORNER AUTHENTICATION)

Found 2" iron pipe with cap at corner. Blue line, Property evidence, and conversation with Taylor County Surveyor supports the iron pipe as corner.



CERTIFIED CORRECT:

Ronald Jacobson

Ronald Jacobson RLS 2059-008

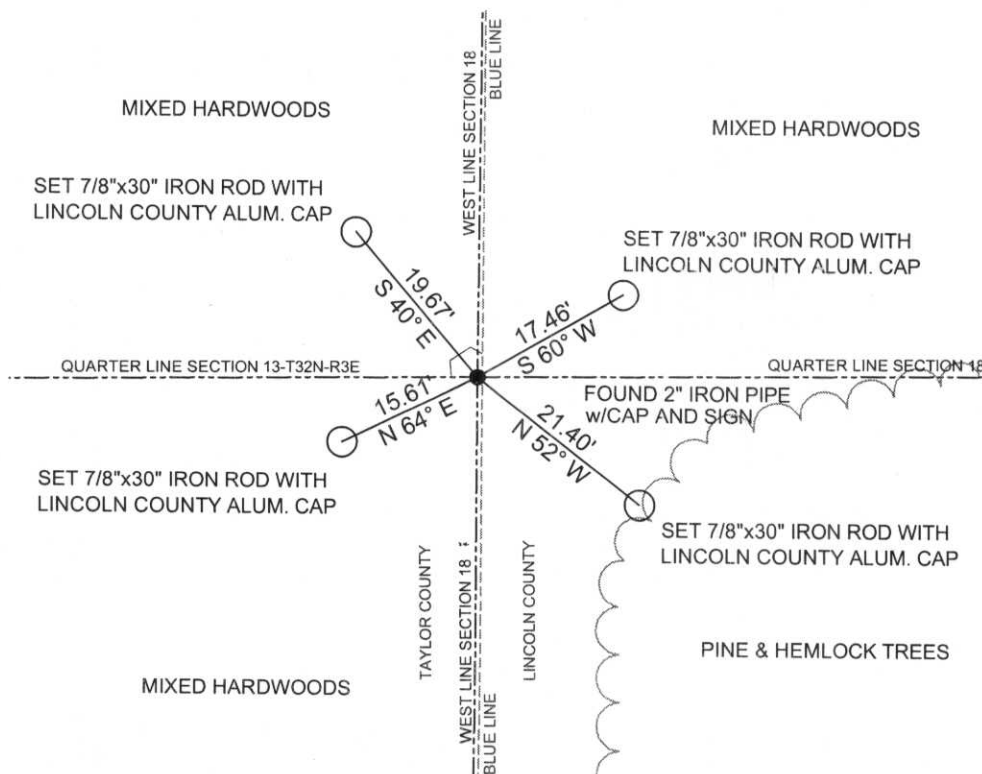
Registered Land Surveyor

DATE: February 23, 2007

COMPANY: Central Wisconsin Engineers & Architects
5707 Schofield Ave.
Weston, Wisconsin 54476
(715) 359-9400

TIE SKETCH:

SHOW MINIMUM OF FOUR (4) HORIZONTAL TIE DISTANCES TO FIXED WITNESS MONUMENTS.
DESCRIBE ALL MONUMENTS FOUND OR SET. ALL DISTANCES SHOWN IN US SURVEY FEET.



RECEIVED BY LINCOLN COUNTY
SURVEYOR THIS 28TH DAY
OF February 20 07
Tom Ball
COUNTY SURVEYOR

COORDINATES ARE REFERENCED TO LINCOLN COUNTY COORDINATE SYSTEM AS DEVELOPED BY THE WI. DEPARTMENT OF TRANSPORTATION AND ARE BASED ON GPS OBSERVATIONS TO CONTROL POINTS AS SUPPLIED BY LINCOLN COUNTY.



NOT TO SCALE
BEARINGS REFERENCED
TO MAGNETIC NORTH

K-1



T32-4E

1/4

8F

18

T32-3E







PLEASE
DO NOT
DISURB
NEARBY

MARKER

IN FOR
KARRY N IS
(RED)
INTACT
ONLY

