

LINCOLN COUNTY U.S. PUBLIC LAND TIE SHEET RECORD

SECTION 10
TOWNSHIP 32N
RANGE 4 E

103247
NO.

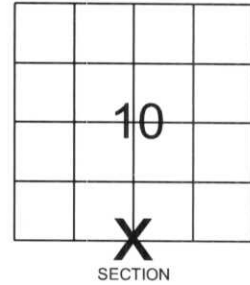
LANDMARK

CORNING
CITY, VILLAGE, TOWN

CORNER INDENTITY: 1.5" IRON PIPE

LINCOLN COUNTY COORDINATE: N: 153709.317
E: 319463.206

FOUND
SET
RE-SET
RE-TIED



DATE OF SURVEY: October 9, 2007
SURVEY PARTY: Eron/Nieds

Description of monument found at this corner and if was accepted, state all evidence (material, testimonial, occupational, plats, records, other monuments) used as a basis for accepting. If not accepted or if nothing was found, state evidence used as basis for establishing location. If reestablished through lost corner proportionate methods, indicate all monuments, distances and directions used to establish.

BASIS FOR MONUMENT LOCATION:

(DESCRIBE METHOD OF SURVEY AND CORNER AUTHENTICATION)

Found 1.5" iron pipe at corner. Blue lines, tag tree, property evidence and comparison to the original notes supports the 1.5" iron pipe as corner.



CWE, Inc.

5707 SCHOFIELD AVE.
WESTON, WISCONSIN
54476

PHONE: (715) 359-9400
FAX: (715) 355-4199

general@cwengineers.com
www.cwengineers.com

CERTIFIED CORRECT:

[Signature]

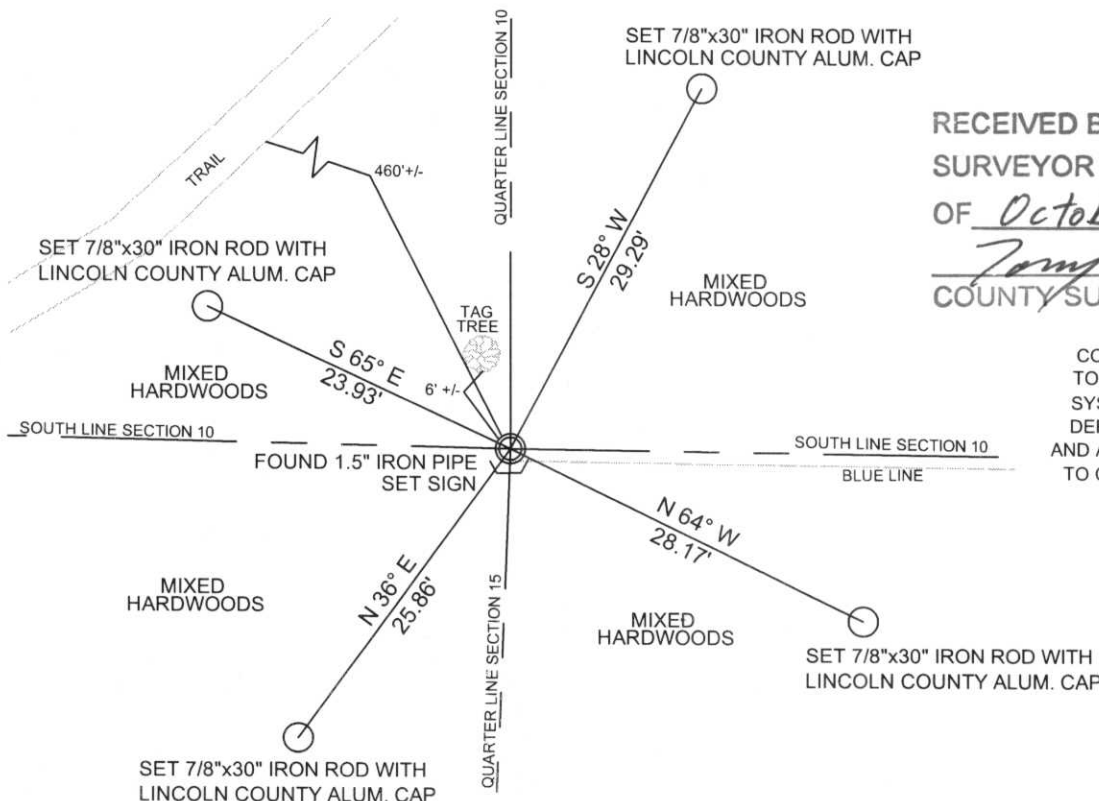
Ronald Jacobson RLS 2059-008

Registered Land Surveyor

DATE: October 19, 2007

TIE SKETCH:

SHOW MINIMUM OF FOUR (4) HORIZONTAL TIE DISTANCES TO FIXED WITNESS MONUMENTS.
DESCRIBE ALL MONUMENTS FOUND OR SET. ALL DISTANCES SHOWN IN US SURVEY FEET.



RECEIVED BY LINCOLN COUNTY
SURVEYOR THIS 22ND DAY
OF October 20 07
[Signature]
COUNTY SURVEYOR

COORDINATES ARE REFERENCED TO LINCOLN COUNTY COORDINATE SYSTEM AS DEVELOPED BY THE WI. DEPARTMENT OF TRANSPORTATION AND ARE BASED ON GPS OBSERVATIONS TO CONTROL POINTS AS SUPPLIED BY LINCOLN COUNTY.

NOT TO SCALE
BEARINGS REFERENCED TO MAGNETIC NORTH





WARNING: YOU must wear proper eye protection when driving any object!



DISTURB
NEAR
S



