

LINCOLN COUNTY U.S. PUBLIC LAND TIE SHEET RECORD

SECTION 7
TOWNSHIP 32N
RANGE 4 E

073246
NO.

LANDMARK

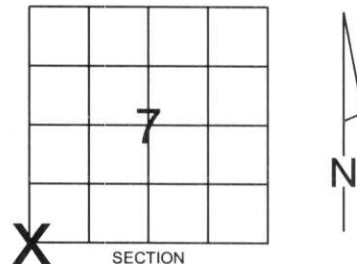
CORNING
CITY, VILLAGE, TOWN

CORNER INDENTITY: 2" IRON PIPE w/CAP

LINCOLN COUNTY COORDINATE: N: 153884.5470
E: 300495.8590

DATE OF SURVEY: February 20, 2007
SURVEY PARTY: Rutzen

FOUND
SET
RE-SET
RE-TIED



Description of monument found at this corner and if was accepted, state all evidence (material, testimonial, occupational, plats, records, other monuments) used as a basis for accepting. If not accepted or if nothing was found, state evidence used as basis for establishing location. If reestablished through lost corner proportionate methods, indicate all monuments, distances and directions used to establish.

BASIS FOR MONUMENT LOCATION:

(DESCRIBE METHOD OF SURVEY AND CORNER AUTHENTICATION)

Found 2" iron pipe with cap at corner. Blue line, Property evidence, and conversation with Taylor County Surveyor supports the iron pipe as corner.



CERTIFIED CORRECT:

[Signature]

Ronald Jacobson RLS 2059-008

Registered Land Surveyor

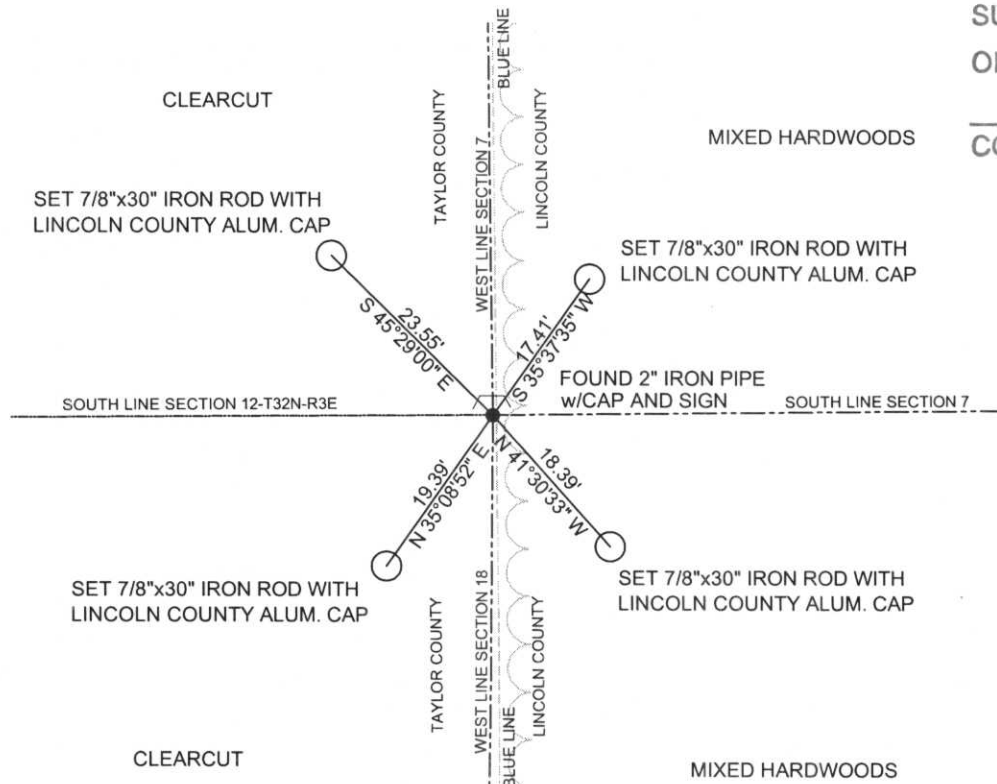
COMPANY: Central Wisconsin Engineers & Architects
5707 Schofield Ave.
Weston, Wisconsin 54476
(715) 359-9400

REVISED 7-16-07

DATE: July 16, 2007

TIE SKETCH:

SHOW MINIMUM OF FOUR (4) HORIZONTAL TIE DISTANCES TO FIXED WITNESS MONUMENTS.
DESCRIBE ALL MONUMENTS FOUND OR SET. ALL DISTANCES SHOWN IN US SURVEY FEET



RECEIVED BY LINCOLN COUNTY
SURVEYOR THIS 3RD DAY
OF August 20 07
[Signature]
COUNTY SURVEYOR

COORDINATES ARE REFERENCED TO LINCOLN COUNTY COORDINATE SYSTEM AS DEVELOPED BY THE WI. DEPARTMENT OF TRANSPORTATION AND ARE BASED ON GPS OBSERVATIONS TO CONTROL POINTS AS SUPPLIED BY LINCOLN COUNTY.

NOT TO SCALE
BEARINGS REFERENCED TO LINCOLN COUNTY COORDINATE SYSTEM

LINCOLN COUNTY U.S. PUBLIC LAND TIE SHEET RECORD

SECTION 7
TOWNSHIP 32N
RANGE 4 E

073246

LANDMARK

CORNING
CITY, VILLAGE, TOWN

NO.

CORNER INDENTITY: 2" IRON PIPE w/CAP

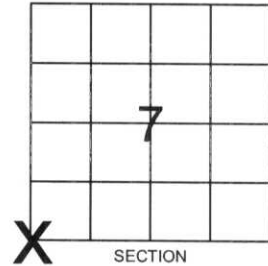
LINCOLN COUNTY COORDINATE: N: 153884.5470

E: 300495.8590

DATE OF SURVEY: February 20, 2007

SURVEY PARTY: Rutzen

FOUND
SET
RE-SET
RE-TIED



Description of monument found at this corner and if was accepted, state all evidence (material, testimonial, occupational, plats, records, other monuments) used as a basis for accepting. If not accepted or if nothing was found, state evidence used as basis for establishing location. If reestablished through lost corner proportionate methods, indicate all monuments, distances and directions used to establish.

BASIS FOR MONUMENT LOCATION:

(DESCRIBE METHOD OF SURVEY AND CORNER AUTHENTICATION)

Found 2" iron pipe with cap at corner. Blue line, Property evidence, and conversation with Taylor County Surveyor supports the iron pipe as corner.



CERTIFIED CORRECT:

Ronald Jacobson

Ronald Jacobson RLS 2059-008

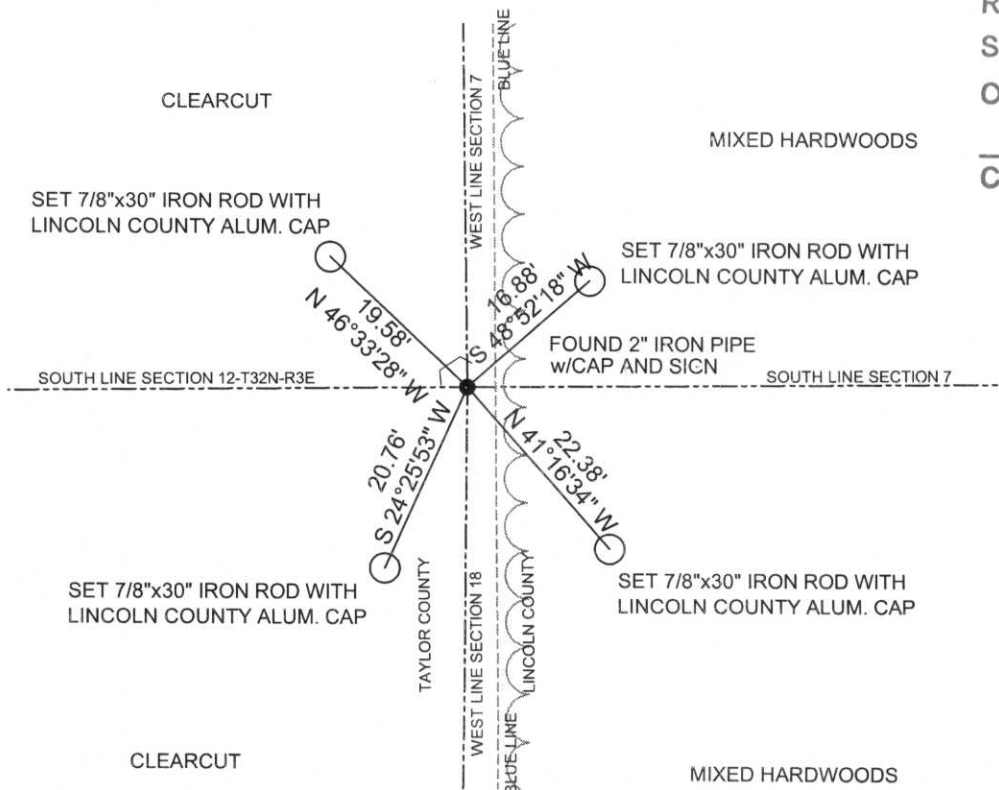
Registered Land Surveyor

DATE: February 23, 2007

COMPANY: Central Wisconsin Engineers & Architects
5707 Schofield Ave.
Weston, Wisconsin 54476
(715) 359-9400

TIE SKETCH:

SHOW MINIMUM OF FOUR (4) HORIZONTAL TIE DISTANCES TO FIXED WITNESS MONUMENTS.
DESCRIBE ALL MONUMENTS FOUND OR SET. ALL DISTANCES SHOWN IN US SURVEY FEET.



RECEIVED BY LINCOLN COUNTY
SURVEYOR THIS 28TH DAY
OF February 2007
Tony Dahl
COUNTY SURVEYOR

COORDINATES ARE REFERENCED TO LINCOLN COUNTY COORDINATE SYSTEM AS DEVELOPED BY THE WI. DEPARTMENT OF TRANSPORTATION AND ARE BASED ON GPS OBSERVATIONS TO CONTROL POINTS AS SUPPLIED BY LINCOLN COUNTY.



NOT TO SCALE
BEARINGS REFERENCED TO LINCOLN COUNTY COORDINATE SYSTEM

I-1



T 32-47

12 7 13
21 31

100 31 34



FOR THE
SURVEY
MARKER
YEAR





WARNING
DO NOT
ENTER
OR CROSS
IN CONTACT
WITH
OFFICE

