

LINCOLN COUNTY U.S. PUBLIC LAND TIE SHEET RECORD

SECTION 11
TOWNSHIP 32N
RANGE 4 E

113244
NO.

LANDMARK

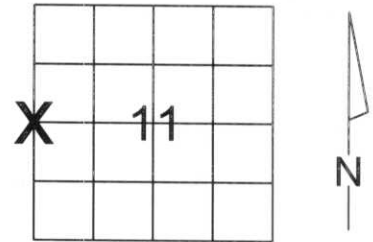
CORNING
CITY, VILLAGE, TOWN

CORNER INDENTITY: 1.5" IRON PIPE

LINCOLN COUNTY COORDINATE: N: 156281.382
E: 322170.533

DATE OF SURVEY: October 23, 2007
SURVEY PARTY: Eron/Nieds

FOUND
SET
RE-SET
RE-TIED



Description of monument found at this corner and if was accepted, state all evidence (material, testimonial, occupational, plats, records, other monuments) used as a basis for accepting. If not accepted or if nothing was found, state evidence used as basis for establishing location. If reestablished through lost corner proportionate methods, indicate all monuments, distances and directions used to establish.

BASIS FOR MONUMENT LOCATION:

(DESCRIBE METHOD OF SURVEY AND CORNER AUTHENTICATION)

Found 1.5" iron pipe at corner. Comparison to original notes supports the iron pipe as the corner.



CWE, Inc.

5707 SCHOFIELD AVE.
WESTON, WISCONSIN
54476

PHONE: (715) 359-9400
FAX: (715) 355-4199

general@cwengineers.com
www.cwengineers.com

RECEIVED BY LINCOLN COUNTY
SURVEYOR THIS 2ND DAY
OF November 20 07
Tony Dall
COUNTY SURVEYOR

CERTIFIED CORRECT:

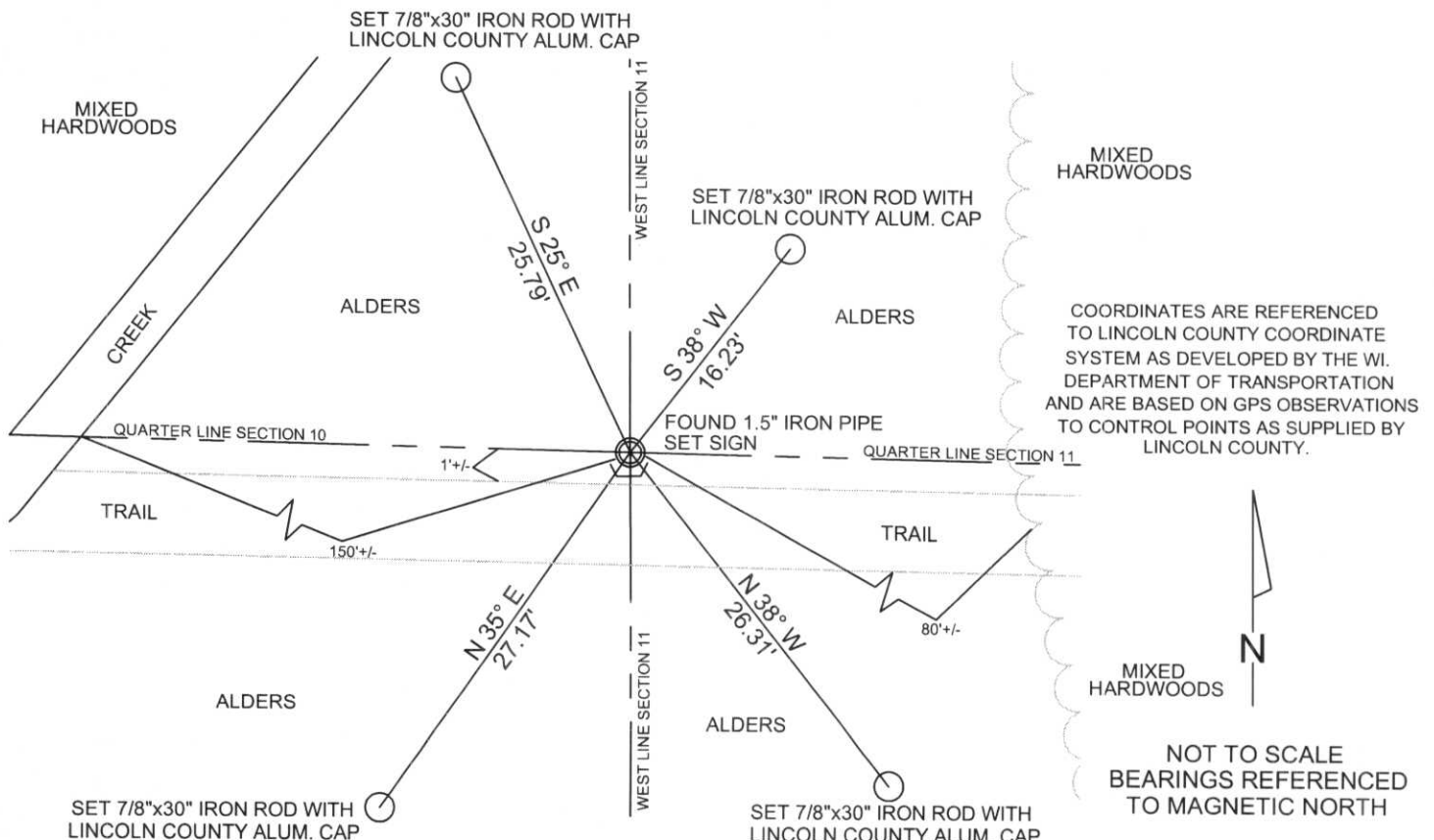
Ronald Jacobson
Ronald Jacobson RLS 2059-008

Registered Land Surveyor

DATE: November 2, 2007

TIE SKETCH:

SHOW MINIMUM OF FOUR (4) HORIZONTAL TIE DISTANCES TO FIXED WITNESS MONUMENTS.
DESCRIBE ALL MONUMENTS FOUND OR SET. ALL DISTANCES SHOWN IN US SURVEY FEET.



NOT TO SCALE
BEARINGS REFERENCED
TO MAGNETIC NORTH











PLEASE
DO NOT
DISTURB
NEAR