

LINCOLN COUNTY U.S. PUBLIC LAND TIE SHEET RECORD

SECTION 3
TOWNSHIP 32N
RANGE 4 E

33248
NO.



LANDMARK

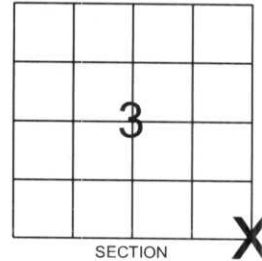
CORNER INDENTITY: 1.5" IRON PIPE

LINCOLN COUNTY COORDINATE: N: 158914.019
E: 322165.260

DATE OF SURVEY: October 10, 2007
SURVEY PARTY: Eron/Nieds

CORNING
CITY, VILLAGE, TOWN

- FOUND
- SET
- RE-SET
- RE-TIED



Description of monument found at this corner and if was accepted, state all evidence (material, testimonial, occupational, plats, records, other monuments) used as a basis for accepting. If not accepted or if nothing was found, state evidence used as basis for establishing location. If reestablished through lost corner proportionate methods, indicate all monuments, distances and directions used to establish.

BASIS FOR MONUMENT LOCATION:

(DESCRIBE METHOD OF SURVEY AND CORNER AUTHENTICATION)

Found 1.5" iron pipe at corner. Property evidence and comparison to the original notes supports the 1.5" iron pipe as corner.



CWE, Inc.

5707 SCHOFIELD AVE.
WESTON, WISCONSIN
54476

PHONE: (715) 359-9400
FAX: (715) 355-4199

general@cwengineers.com
www.cwengineers.com

CERTIFIED CORRECT:

Ronald K. Jacobson

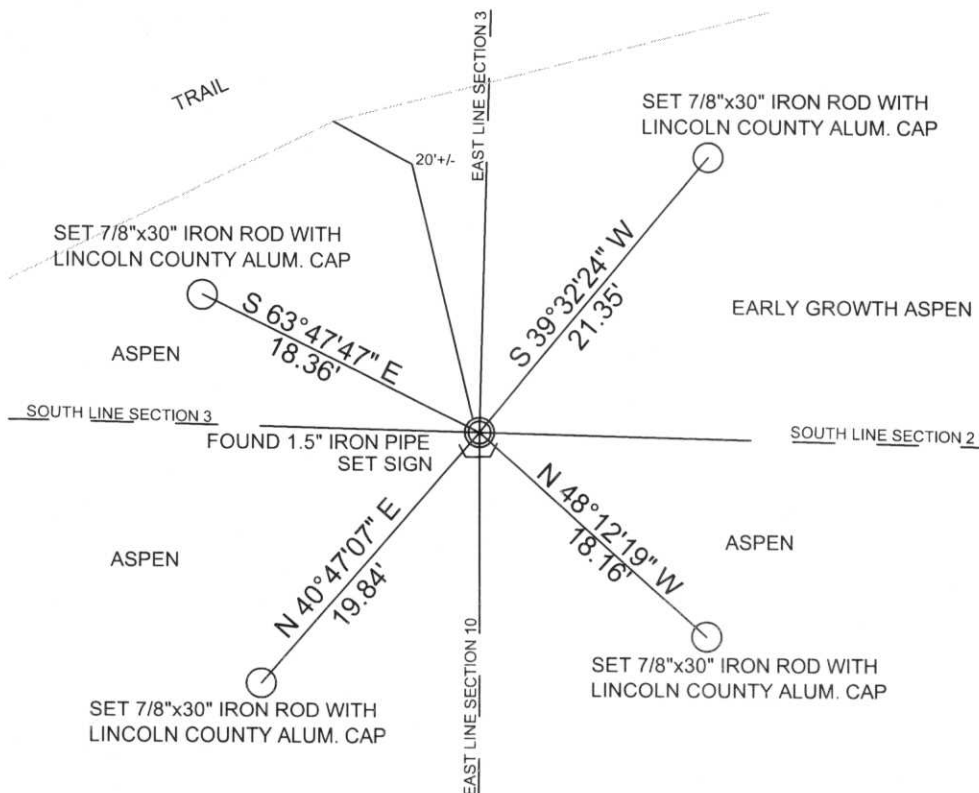
Ronald Jacobson RLS 2059-008

Registered Land Surveyor

DATE: October 19, 2007

TIE SKETCH:

SHOW MINIMUM OF FOUR (4) HORIZONTAL TIE DISTANCES TO FIXED WITNESS MONUMENTS.
DESCRIBE ALL MONUMENTS FOUND OR SET. ALL DISTANCES SHOWN IN US SURVEY FEET.



RECEIVED BY LINCOLN COUNTY
SURVEYOR THIS 22ND DAY
OF October 20 07
Tom Dallen
COUNTY SURVEYOR

COORDINATES ARE REFERENCED
TO LINCOLN COUNTY COORDINATE
SYSTEM AS DEVELOPED BY THE WI.
DEPARTMENT OF TRANSPORTATION
AND ARE BASED ON GPS OBSERVATIONS
TO CONTROL POINTS AS SUPPLIED BY
LINCOLN COUNTY.



NOT TO SCALE
BEARINGS REFERENCED
TO LINCOLN COUNTY
COORDINATE SYSTEM









PLEASE

NEARBY

SIM

