

LINCOLN COUNTY U.S. PUBLIC LAND TIE SHEET RECORD

SECTION 2
TOWNSHIP 32N
RANGE 4 E

23244
NO.

CORNING
CITY, VILLAGE, TOWN

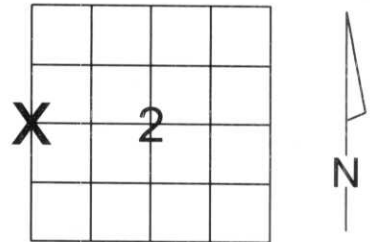
LANDMARK

CORNER INDENTITY: BERNSTEN MONUMENT

LINCOLN COUNTY COORDINATE: N: 161547.990
E: 322233.078

DATE OF SURVEY: October 23, 2007
SURVEY PARTY: Eron/Nieds

FOUND
SET
RE-SET
RE-TIED



Description of monument found at this corner and if was accepted, state all evidence (material, testimonial, occupational, plats, records, other monuments) used as a basis for accepting. If not accepted or if nothing was found, state evidence used as basis for establishing location. If reestablished through lost corner proportionate methods, indicate all monuments, distances and directions used to establish.

BASIS FOR MONUMENT LOCATION:

(DESCRIBE METHOD OF SURVEY AND CORNER AUTHENTICATION)
No evidence remained of the corner. Corner was set by single proportionate measurement. Set Lincoln County Bernsten Monument at Corner.



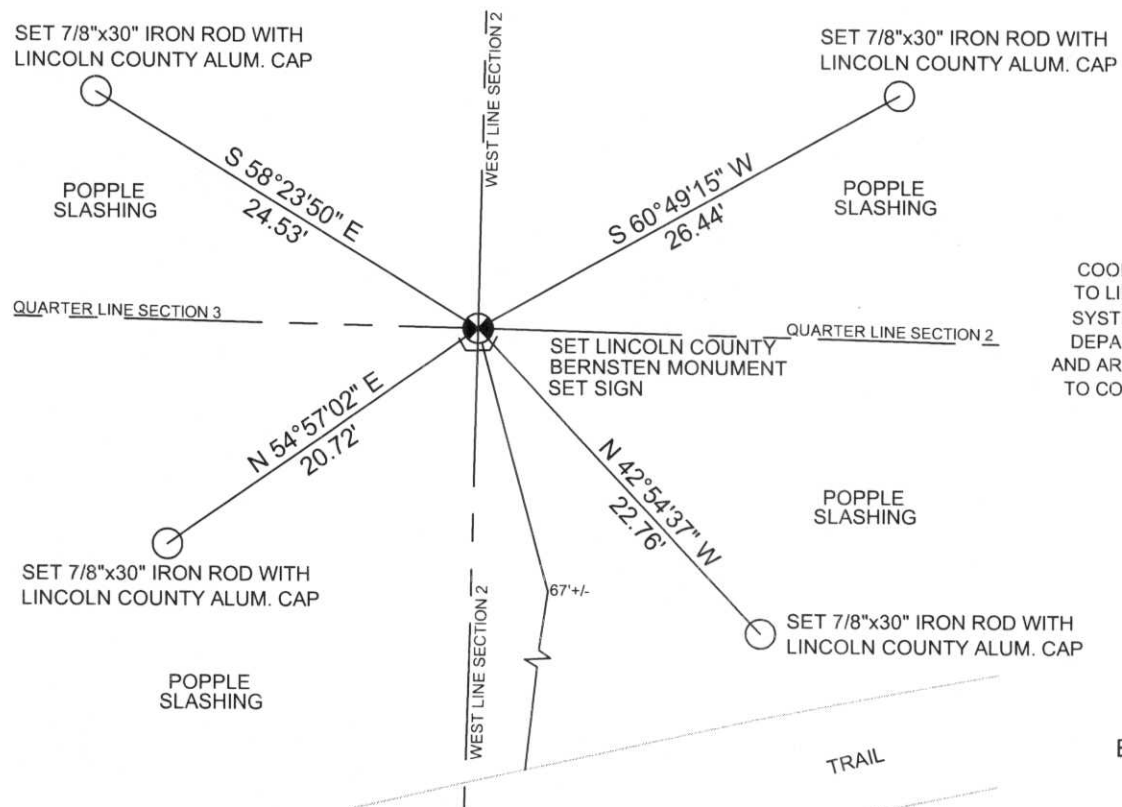
CWE, Inc.
5707 SCHOFIELD AVE.
WESTON, WISCONSIN
54476
PHONE: (715) 359-9400
FAX: (715) 355-4199
general@cwengineers.com
www.cwengineers.com

RECEIVED BY LINCOLN COUNTY
SURVEYOR THIS 2ND DAY
OF November 20 07
Ronald Jacobson
COUNTY SURVEYOR

CERTIFIED CORRECT:
Ronald Jacobson
Ronald Jacobson RLS 2059-008
Registered Land Surveyor
DATE: November 2, 2007

TIE SKETCH:

SHOW MINIMUM OF FOUR (4) HORIZONTAL TIE DISTANCES TO FIXED WITNESS MONUMENTS.
DESCRIBE ALL MONUMENTS FOUND OR SET. ALL DISTANCES SHOWN IN US SURVEY FEET.



COORDINATES ARE REFERENCED TO LINCOLN COUNTY COORDINATE SYSTEM AS DEVELOPED BY THE WI. DEPARTMENT OF TRANSPORTATION AND ARE BASED ON GPS OBSERVATIONS TO CONTROL POINTS AS SUPPLIED BY LINCOLN COUNTY.

NOT TO SCALE
BEARINGS REFERENCED TO LINCOLN COUNTY COORDINATE SYSTEM



COASTAL LIMPET
FOR DISTURBANCE
STANDARD
LABORATORY



