

LINCOLN COUNTY U.S. PUBLIC LAND SURVEY MONUMENT LOCATION RECORD

Corner Location: Section corner between 36 and 31 (Lincoln/Langlade)

Monument Type: Set 0.75" x 24" Rebar

County Coordinate: N 260,356.39 E 333,821.69

Date of Survey: 5/28/2019 Datum: WSCRS Marathon NAD 83 (2011)

Survey Party: John Jursa

Field Book: Looseleaf Hewitt

Page Number: Y25

Found
Set
Re-set
Re-Tied

Section 36/31

Township 31N

Range 8E/9E

Pine River/Ackley
City, Village, Town

Y25

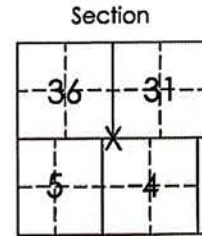
BASIS FOR MONUMENT LOCATION:

(Describe method of survey and corner authentication)

11/10/1977 - Kiedrowski dug with backhoe and found a 6" x 6" granite stone. Stone monument was lowered and a berntsen monument was set over top. Corner tied to nails and ID washers in powerpoles.

6/1/1995 - C. Nowaczyk found berntsen monument and two remaining ties. Set four additional ties.

5/28/2019 - Visited corner location and found three remaining ties in good condition. dug for corner and found a berntsen monument that was damaged and broken. This location did not fit ties from either 1995 nor 1977. Intersected ties and found a nail at the tie intersection. Removed and set a 0.75" x 24" rebar and set new ties as measured and shown below.



Location
(indicated by X)

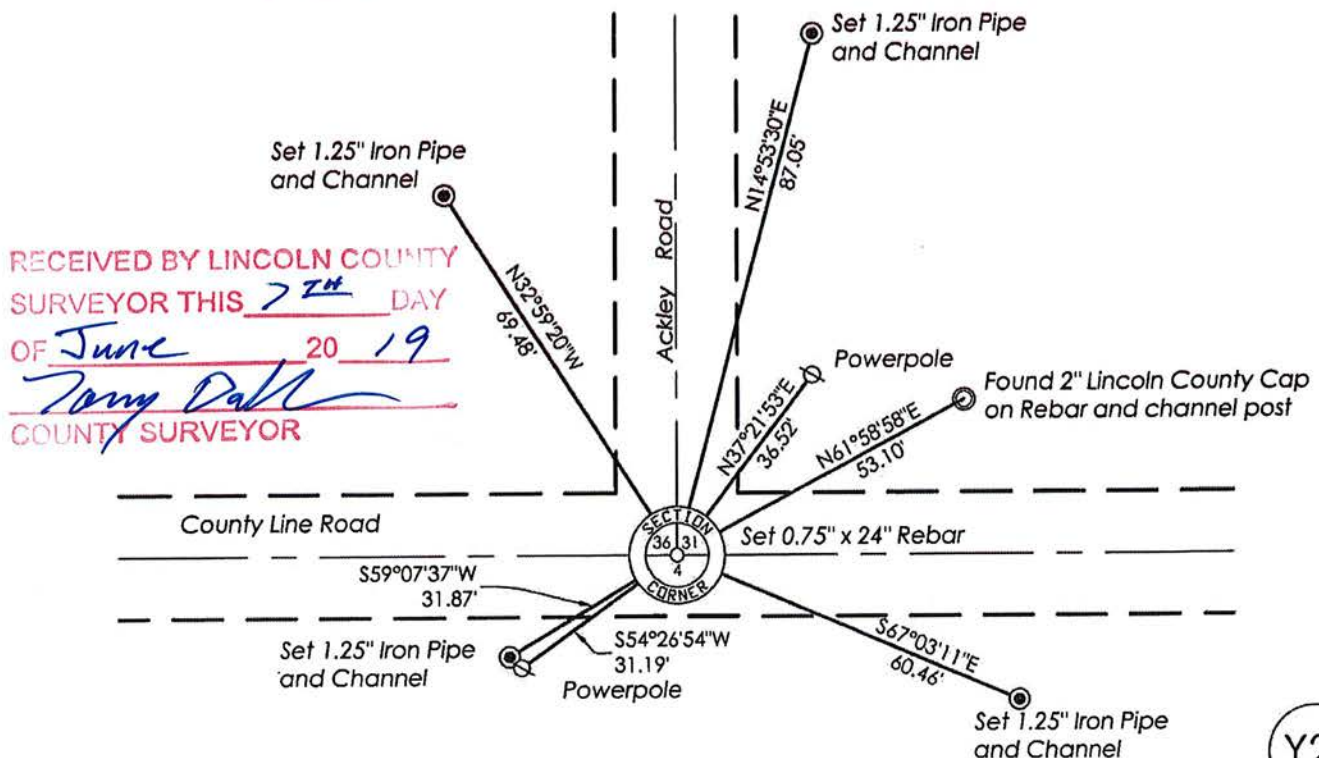


Emily K. Pierce

Emily K. Pierce, RLS-2728

Date: 5/28/2019

TIE SKETCH: Show minimum of four (4) horizontal tie distances to fixed witness monuments. Describe all monuments found or set.



Y25

U.S. PUBLIC LAND SURVEY MONUMENT RECORD

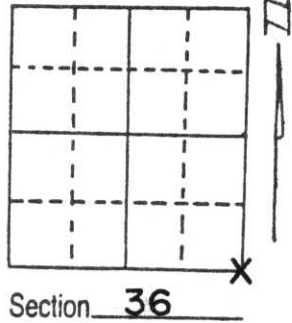
Note: This form is intended and designed to fulfill all requirements of Wisconsin Administrative Code, Chapter A-E 5.02, U.S. Public Land Survey Monument Record (3) (a) (b) (c) (d) (e) (f) (g) (h) (i). An additional sheet may be added if necessary to conform with said requirements.

(a) Corner location: Township 31 North

Range 8 East

Town PINE RIVER

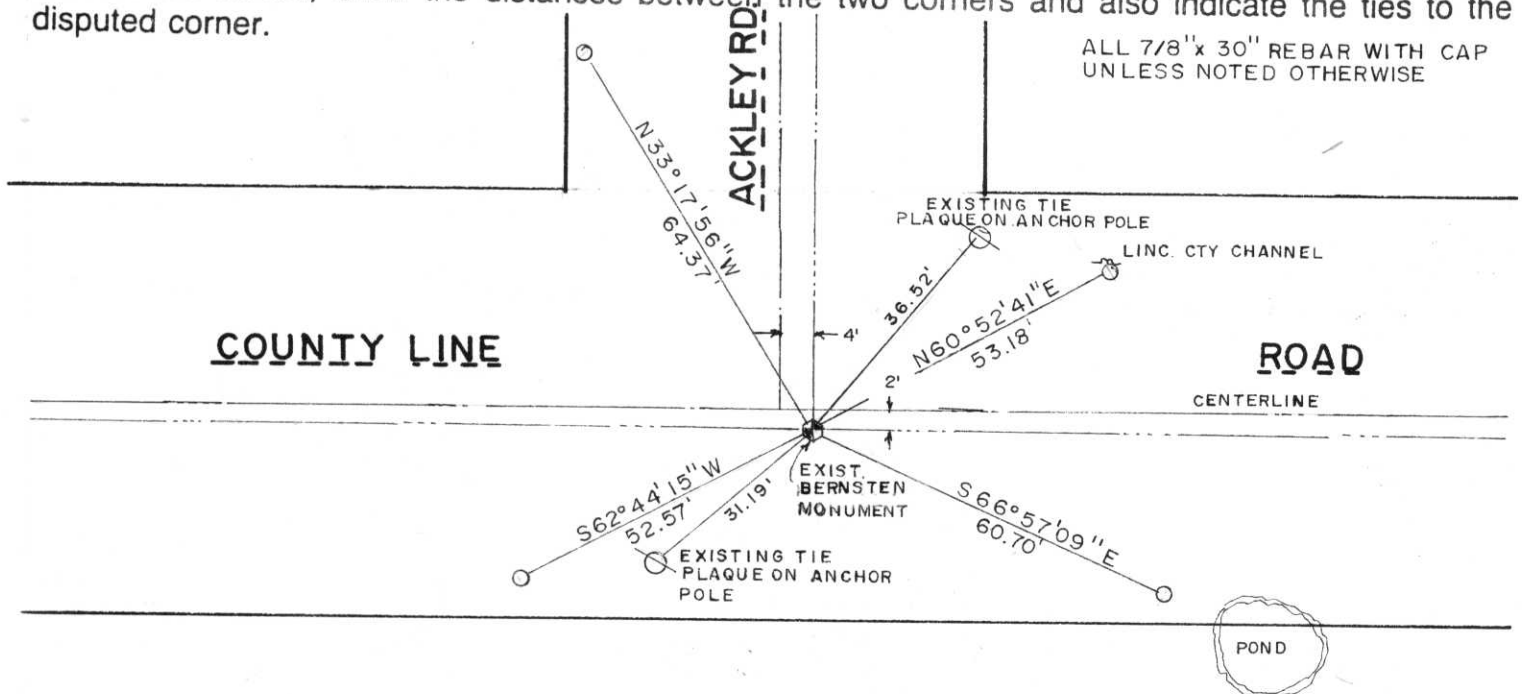
County LINCOLN



(b) (f) (g) (h) Description of monument found at this corner and if it was accepted, state all evidence (material, testimonial, occupational, plats, records, other monuments) used as a basis for accepting. If not accepted or if nothing was found, state evidence used as basis for establishing location. If reestablished through lost corner proportionate methods, indicate all monuments, distances and directions used to establish.

Found an existing Bernsten monument which was set over a 6"x 6"x 17" quarried granite stone by A.B. Kiedrowski on 11/10/1977. Retied because the two remaining ties are almost directly across from each other. See Section Summary sheet for bearings and distances to adjacent corners.

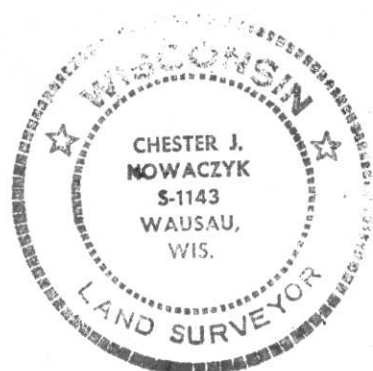
(c) (d) (e) Plan view of corner with ties to at least 4 witness monuments. If in disagreement with previously established corner, show the distances between the two corners and also indicate the ties to the disputed corner.



(i) I, CHESTER J. Nowaczyk

(type or print name) certify that the corner location on this record was determined by me or under my direction and control and that this U.S. Public Land Survey Monument Record is correct and complete to the best of my knowledge and belief.

Chester J. Nowaczyk June 1, 1995
Signature Date



Index No. Y-25

Y-25

Government Land Corner Certificate

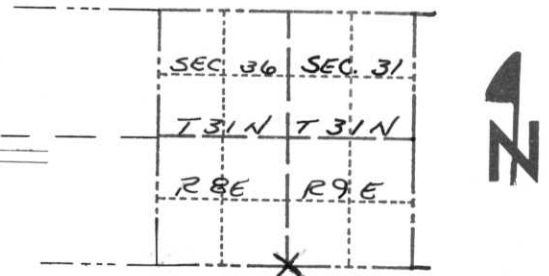
LINCOLN County
 TYPE OF MONUMENT: BERNSTEN MONUMENT
 STATE PLANE COORDINATES: N _____
 E _____
 ELEVATION — M.S.L. DATUM: _____
 THETA ANGLE: _____
 FIELD BOOK: _____ PAGE _____
 DRAWN BY: G. Rhinehart

CORNER NO. _____
 SECTION 36
 TOWN 31
 RANGE 8

BASIS FOR MONUMENT LOCATION

Show info such as: History of corner, with reference to Vol. and pg., dates, surveyor; exact description of monument replaced; if location computed, by taped or EDM traverse; landowner remarks, etc. (Use reverse side if necessary)

A.B. Kiedrowski dug with a backhoe and found 6"X6"X17" Quarried Granite Stone with diagonal cross cut in top. The stone was lowered and a Bernstea Monument was set above it.



LOCATION
(Indicated by 'X')

SEAL:



DATA SHOWN HERE ON CERTIFIED CORRECT:

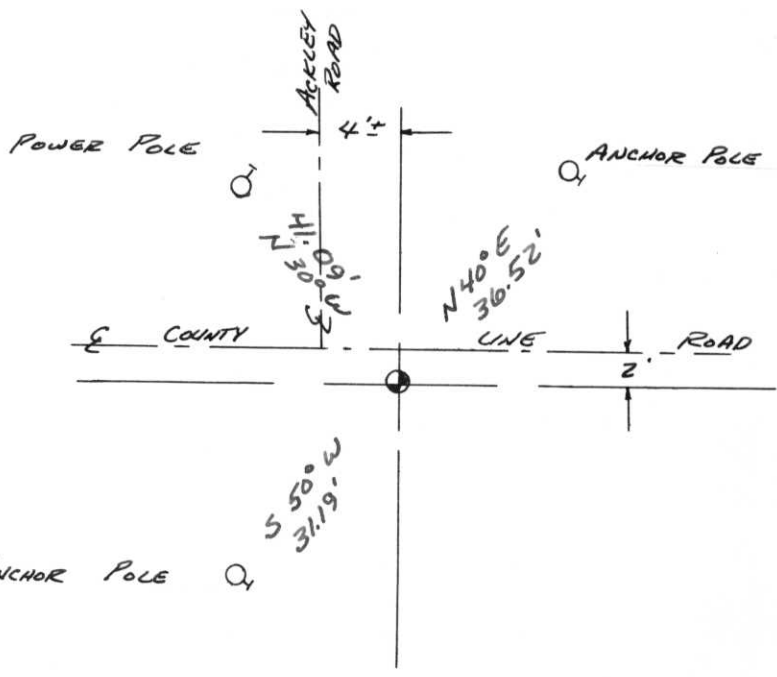
Anthony B. Kiedrowski
 Registered Land Surveyor

DATE: 11/10/77

TIE SKETCH

Show at least four ties, also fence lines, roads, topo, size and type of witness trees' and if off road - best way to arrive at corner.

Ties are to nails and discs driven into poles.
 The poles also have aluminum location posters affixed to them.



MAINTENANCE RECORD

Date	Init.	Remarks