

**LINCOLN COUNTY U.S. PUBLIC LAND
SURVEY MONUMENT LOCATION RECORD**

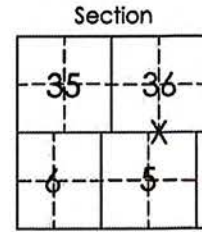
Corner Location: South Quarter Corner Section 36
 Monument Type: Found Berntsen Monument
 County Coordinate: N 260396.036 , E 331183.267
 Date of Survey: 6/5/2019 Datum: WSCRS Marathon NAD 83 (2011)
 Survey Party: John M. Jursa
 Field Book: Looseleaf Hewitt Page Number: Y23

Found
 Set
 Re-set
 Re-Tied

Section 36
 Township 31N
 Range 8E

Y23

Pine River
~~City, Village, Town~~



Location (indicated by X)

BASIS FOR MONUMENT LOCATION:

(Describe method of survey and corner authentication)

6/1/1995 - Chester Nowaczyk found a 6" X 6" Granite Stone broken into two pieces under the surface of gravel road. He used the base of Stone and set a Berntsen Monument and set out ties.

6/7/2019 - found the Berntsen Monument as described by Nowaczyk and accepted as at the corner position. Found all remaining ties and measured as shown below.



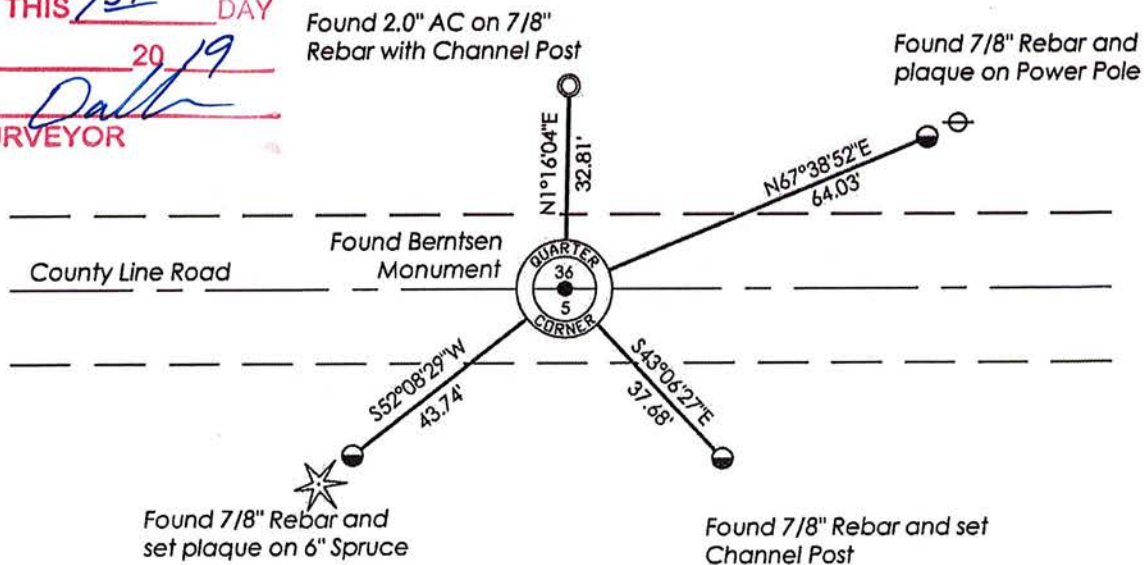
Emily K. Pierce

Emily K. Pierce, RLS-2728

Date: 6/28/2019

TIE SKETCH: Show minimum of four (4) horizontal tie distances to fixed witness monuments. Describe all monuments found or set.

RECEIVED BY LINCOLN COUNTY
 SURVEYOR THIS 15TH DAY
 OF July 20 19
Terry Dalby
 COUNTY SURVEYOR



Y23

U.S. PUBLIC LAND SURVEY MONUMENT RECORD

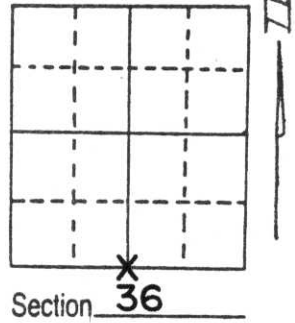
Note: This form is intended and designed to fulfill all requirements of Wisconsin Administrative Code, Chapter A-E 5.02, U.S. Public Land Survey Monument Record (3) (a) (b) (c) (d) (e) (f) (g) (h) (i). An additional sheet may be added if necessary to conform with said requirements.

(a) Corner location: Township 31 North

Range 8 East

Town/County PINE RIVER

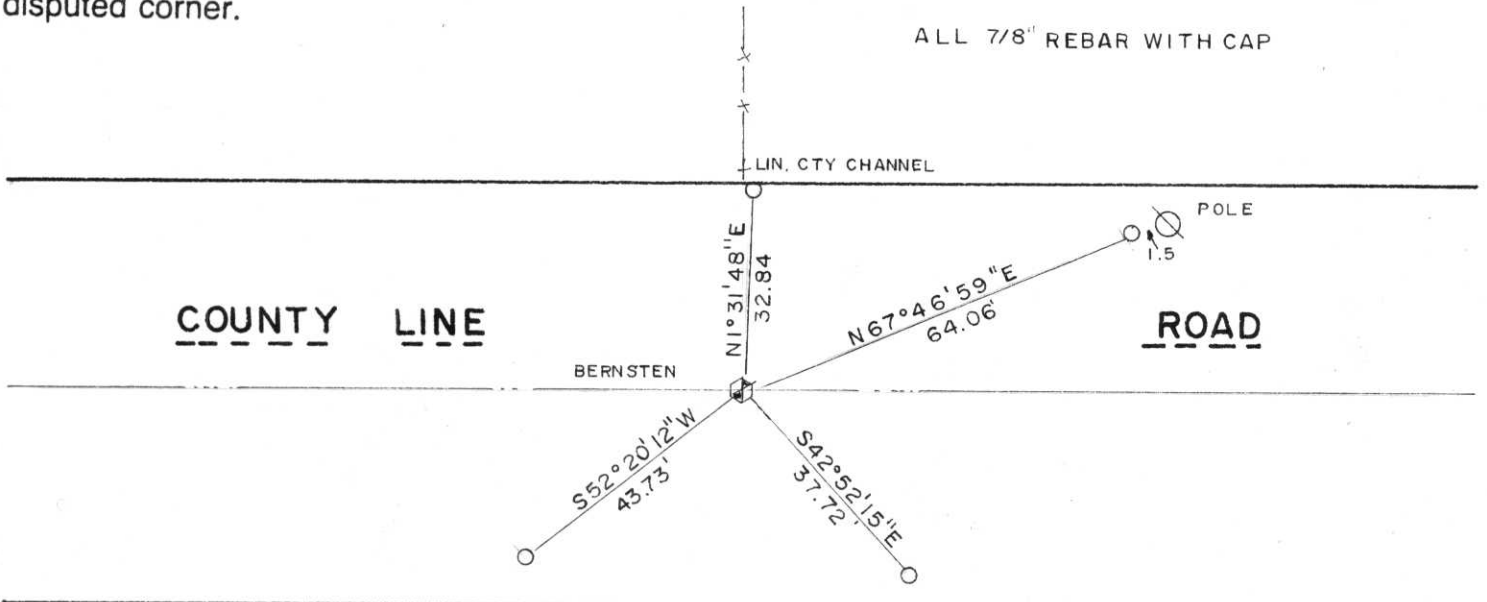
County LINCOLN



(b) (f) (g) (h) Description of monument found at this corner and if it was accepted, state all evidence (material, testimonial, occupational, plats, records, other monuments) used as a basis for accepting. If not accepted or if nothing was found, state evidence used as basis for establishing location. If reestablished through lost corner proportionate methods, indicate all monuments, distances and directions used to establish.

Dug with power equipment and found an existing 6"x 6" quarried granite stone similar to the one found by A.B. Kiedrowski at the SE corner of Sec. 36, T31N, R8E. This stone was broken into two pieces tied in base of monument and reset with a standard Lincoln County Bernsten monument. See Section Summary sheet for bearings and distances to adjacent corners.

(c) (d) (e) Plan view of corner with ties to at least 4 witness monuments. If in disagreement with previously established corner, show the distances between the two corners and also indicate the ties to the disputed corner.



(i) I, CHESTER J. NOWACZYK
 (type or print name) certify that the corner location on this record was determined by me or under my direction and control and that this U.S. Public Land Survey Monument Record is correct and complete to the best of my knowledge and belief.

Chester J. Nowaczyk June 1, 1975
 Signature Date



Index No. Y-23