

**LINCOLN COUNTY U.S. PUBLIC LAND
SURVEY MONUMENT LOCATION RECORD**

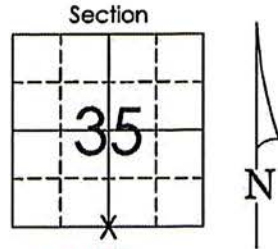
Corner Location: South 1/4 Corner of Section 35
 Monument Type: Set SMN-1 Nail
 County Coordinate: N 260,430.097 , E 325,892.775
 Date of Survey: 4/3/2019 Datum: WSCRS Marathon NAD 83 (2011)
 Survey Party: Emily K. Pierce
 Field Book: Looseleaf Hewitt Page Number: Y19

Found
 Set
 Re-set
 Re-Tied

Section 35
 Township 31N
 Range 8E

Y19

Pine River
~~City, Village, Town~~

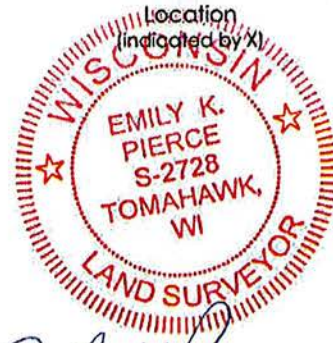


BASIS FOR MONUMENT LOCATION:

(Describe method of survey and corner authentication)

6/1/1995 Chester Nowaczyk reported that local resident said granite monument was pulled out by town grader. Dug with power equipment and found a sharpened wooden stake circled by stones and accepted as at corner location after verifying this by traversing to adjacent Lincoln and Marathon corners. Set a Harrison Monument at the corner position and set 4 ties.

4/3/2019 I visited corner location and found all 4 ties in good condition. Area was blacktopped but didn't find any surface monument. Intersected ties and set an SMN-1 Nail at surface. Measurements to ties are as shown below.

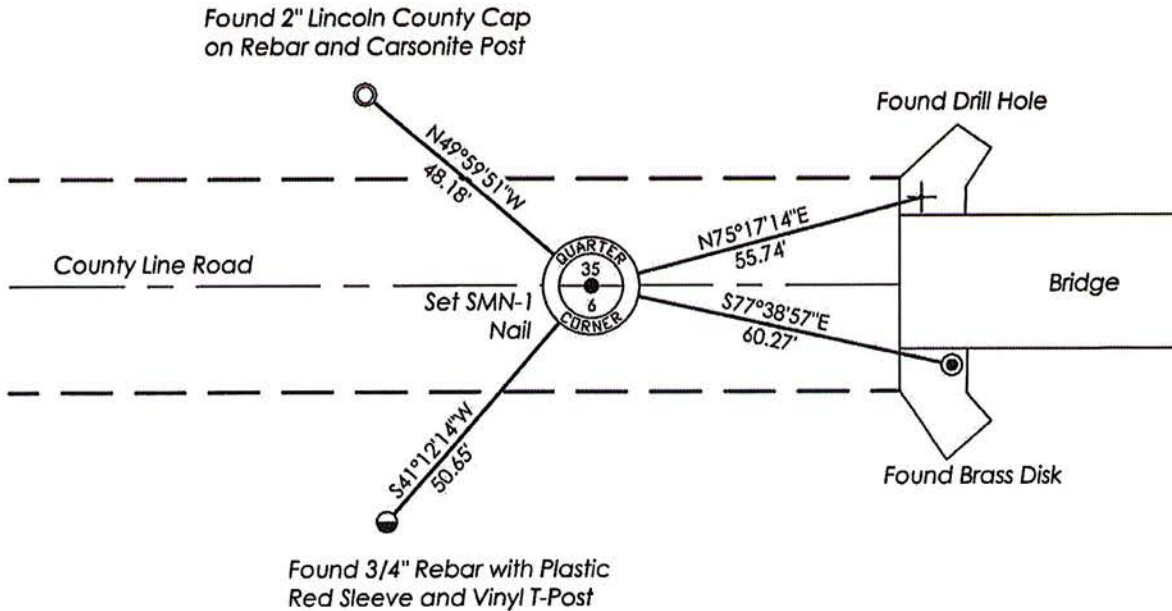


Emily K. Pierce

Emily K. Pierce, RLS-2728

Date: 4/30/2019

TIE SKETCH: Show minimum of four (4) horizontal tie distances to fixed witness monuments. Describe all monuments found or set.



RECEIVED BY LINCOLN COUNTY
 SURVEYOR THIS 30TH DAY
 OF April 20 19
Tony Dube
 COUNTY SURVEYOR

Y19

U.S. PUBLIC LAND SURVEY MONUMENT RECORD

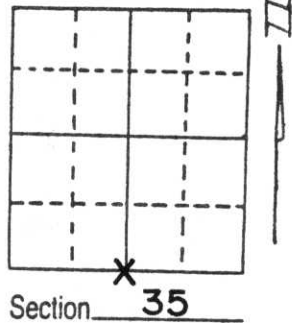
Note: This form is intended and designed to fulfill all requirements of Wisconsin Administrative Code, Chapter A-E 5.02, U.S. Public Land Survey Monument Record (3) (a) (b) (c) (d) (e) (f) (g) (h) (i). An additional sheet may be added if necessary to conform with said requirements.

(a) Corner location: Township 31 North

Range 8 East

Town PINE RIVER

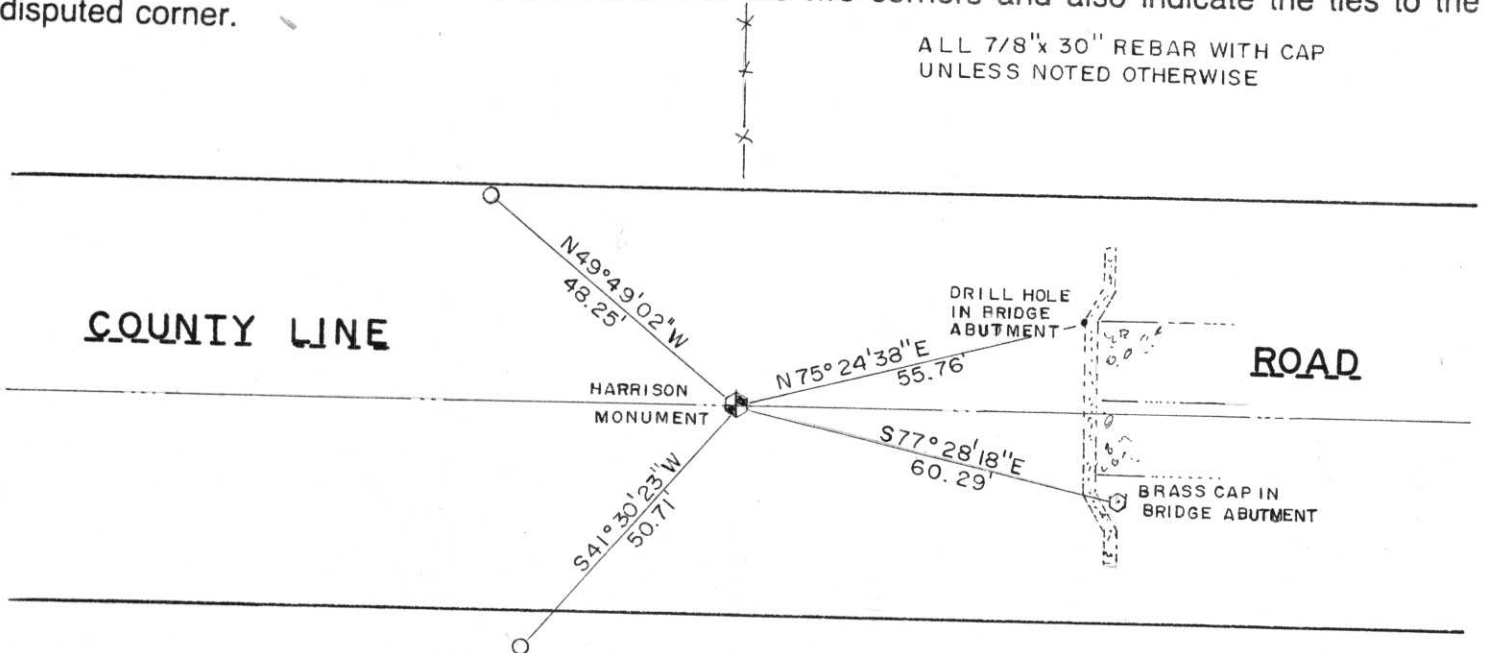
County LINCOLN



(b) (f) (g) (h) Description of monument found at this corner and if it was accepted, state all evidence (material, testimonial, occupational, plats, records, other monuments) used as a basis for accepting. If not accepted or if nothing was found, state evidence used as basis for establishing location. If reestablished through lost corner proportionate methods, indicate all monuments, distances and directions used to establish.

Local resident said that a granite monument was pulled out by town grader and set by fence on north side of road. We dug with power equipment on the extension of fence on the north with its intersection with the centerline of road at 3 feet below the road surface. I found a sharpened wooden stake circled by stones and accepted as corner after verifying this by traversing to the adjacent Marathon and Lincoln County corners. See Section Summary sheet for bearings and distances to adjacent corners. Set a standard Harrison monument at the staked location. Stake was removed and turned over to Lincoln County Property Lister's Department.

(c) (d) (e) Plan view of corner with ties to at least 4 witness monuments. If in disagreement with previously established corner, show the distances between the two corners and also indicate the ties to the disputed corner.



(i) I, Chester J. Nowaczyk
 (type or print name) certify that the corner location on this record was determined by me or under my direction and control and that this U.S. Public Land Survey Monument Record is correct and complete to the best of my knowledge and belief.

Chester J. Nowaczyk June 1, 1995
 Signature Date



Index No. Y-19