

**LINCOLN COUNTY U.S. PUBLIC LAND
SURVEY MONUMENT LOCATION RECORD**

Corner Location: Southwest Corner of Section 35
 Monument Type: Set SMN-1 Nail
 County Coordinate: N 260,421.064 , E 323,250.460
 Date of Survey: 4/3/2019 Datum: WSCRS Marathon NAD 83 (2011)
 Survey Party: Emily K. Pierce
 Field Book: Looseleaf Hewitt Page Number: Y17

Found
 Set
 Re-set
 Re-Tied

Section 35
 Township 31N
 Range 8E
Pine River
 City, Village, Town

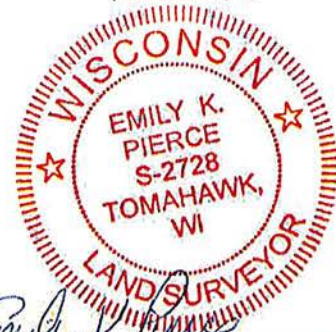
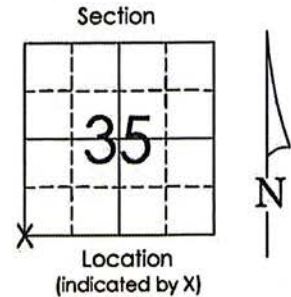
Y17

BASIS FOR MONUMENT LOCATION:

(Describe method of survey and corner authentication)

6/01/1995 Chester Nowaczyk dug with power equipment and found a 5" x 5" granite stone. Set an iron along east side of stone for future detection. Set four ties.

4/03/2019 I visited corner location and all four ties but no monument at surface. Road base has been built up ± 8' above natural ground. In lieu of disturbing asphalt, position was calculated from intersecting found ties that were in good condition and set an SMN-1 Nail in asphalt surface. Ties updated with channel posts, if needed, and measured as shown below.

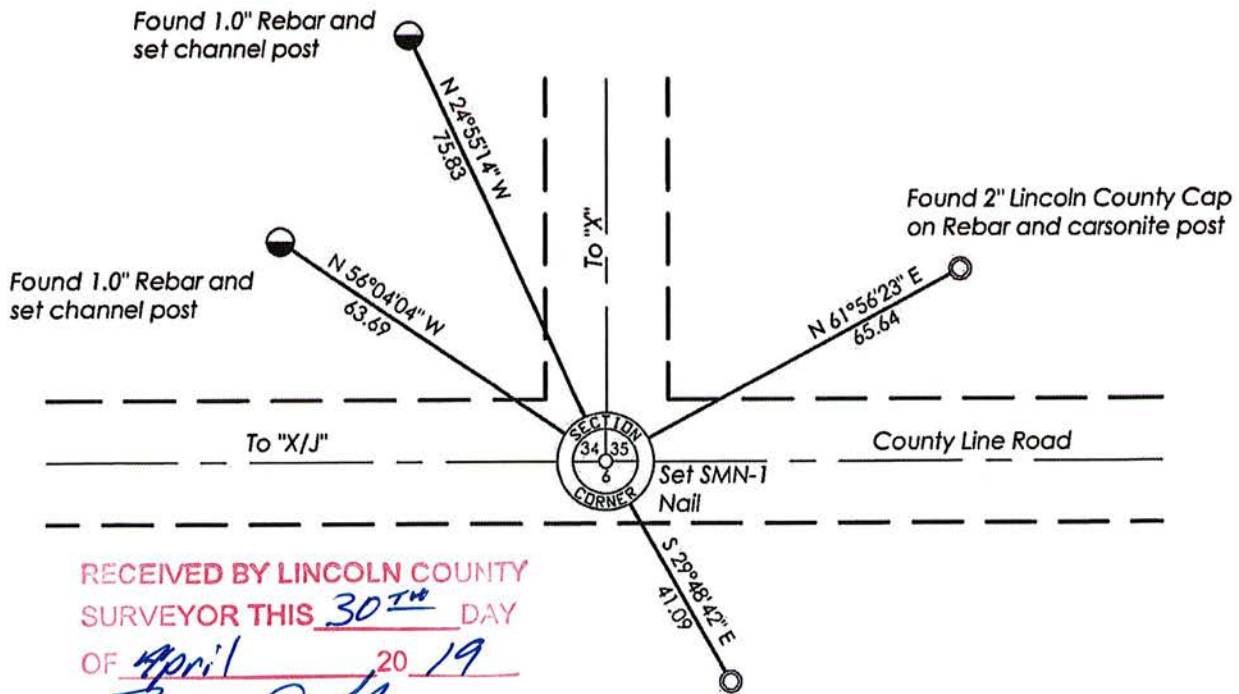


Emily K. Pierce

Emily K. Pierce, RLS-2728

Date: 4/30/2019

TIE SKETCH: Show minimum of four (4) horizontal tie distances to fixed witness monuments. Describe all monuments found or set.



RECEIVED BY LINCOLN COUNTY
 SURVEYOR THIS 30TH DAY
 OF April 20 19
Tony Oak
 COUNTY SURVEYOR

Found 2" Lincoln County Cap
 on Rebar and set channel post

Y17

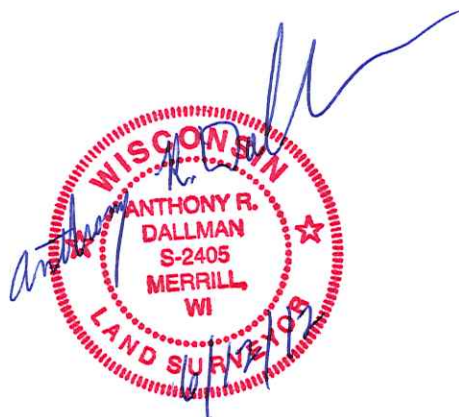
Attachment to Tie Sheet Y-17 T31N, R8E

Visited this corner on June 4, 2012 and found all 4 Reference Monuments in good condition. The Southeast Reference Monument tie has no distance shown on the Tie Sheet. The other 3 Reference Monuments cross well and used that position to measure the Southeast Reference Monument tie, measured the distance to be 41.12'. Field Book #5 Page 141.

Anthony Dallman *6/12/12*

Anthony Dallman

Lincoln County Surveyor



Y-17

U.S. PUBLIC LAND SURVEY MONUMENT RECORD

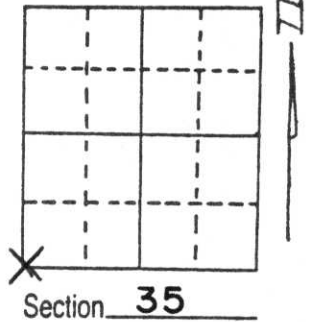
Note: This form is intended and designed to fulfill all requirements of Wisconsin Administrative Code, Chapter A-E 5.02, U.S. Public Land Survey Monument Record (3) (a) (b) (c) (d) (e) (f) (g) (h) (i). An additional sheet may be added if necessary to conform with said requirements.

(a) Corner location: Township 31 North

Range 8 East

Town ██████████ PINE RIVER

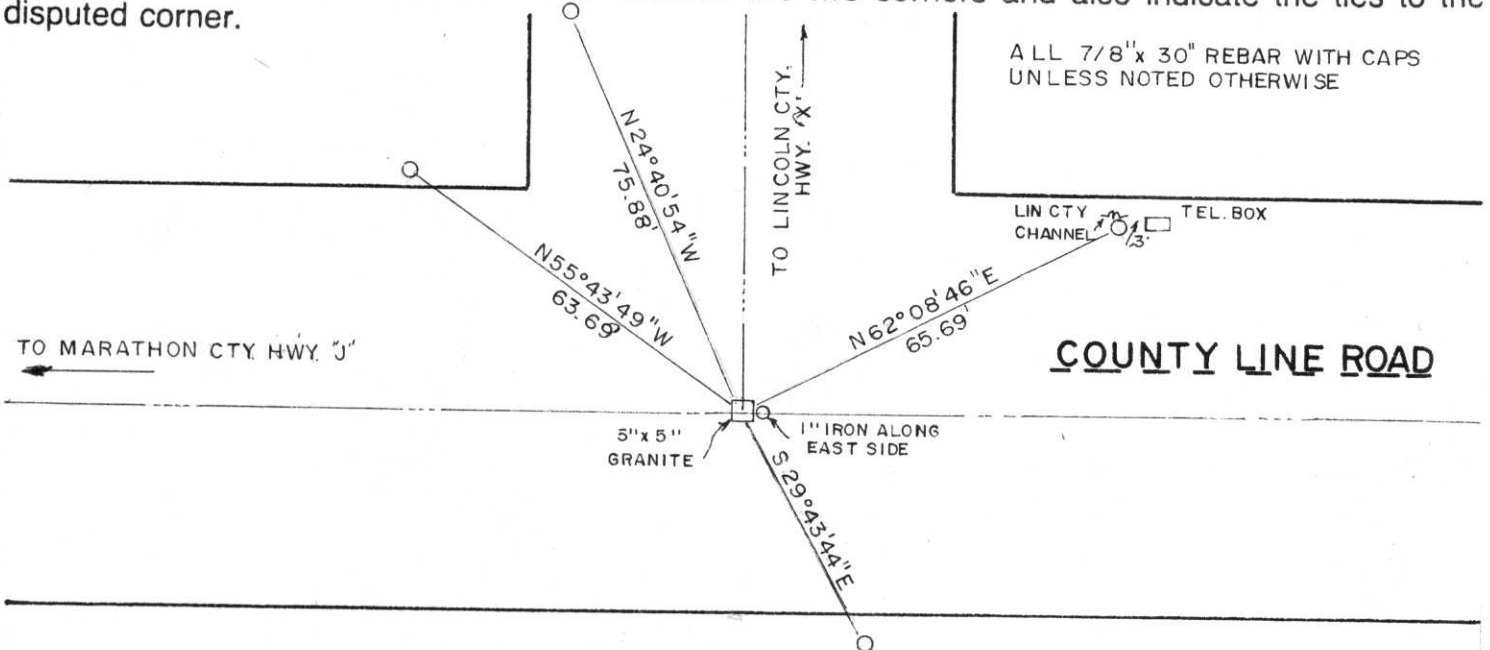
County LINCOLN



(b) (f) (g) (h) Description of monument found at this corner and if it was accepted, state all evidence (material, testimonial, occupational, plats, records, other monuments) used as a basis for accepting. If not accepted or if nothing was found, state evidence used as basis for establishing location. If reestablished through lost corner proportionate methods, indicate all monuments, distances and directions used to establish.

Dug with power equipment. Found a 5"x 5" quarried granite stone similar to the one found by A.B. Kiedrowski at the SE corner of Section 36, T31N, R8E. Set an iron along the east side of stone for future detection. See section summary sheet for bearing and distance to adjacent corner.

(c) (d) (e) Plan view of corner with ties to at least 4 witness monuments. If in disagreement with previously established corner, show the distances between the two corners and also indicate the ties to the disputed corner.



(i) I, Chester J. Nowaczyk
 (type or print name) certify that the corner location on this record was determined by me or under my direction and control and that this U.S. Public Land Survey Monument Record is correct and complete to the best of my knowledge and belief.

Chester J. Nowaczyk June 1, 1995
 Signature Date



Index No. Y-17